

2022

ANNUAL REPORT



LINCOLN PARK ZOO®

FOR WILDLIFE. FOR ALL.

TABLE OF CONTENTS

3 Letter from the Chairman of the Board of Trustees

4 Letter from the President and CEO

STRATEGIC GOAL ACHIEVEMENTS

6 Goal 1: Leading the Way for Wildlife

8 Goal 2: Building Bonds

10 Goal 3: Implementing Inclusion

13 Goal 4: Transformations Through Technology

14 Goal 5: Growing Support

16 A World of Wildlife

18 The Cats Are Back

20 Diving Deep: An Inside Look at Pepper Family Wildlife Center

24 Financials

26 Lincoln Park Zoo Supporters

Lincoln Park Zoo Strategic Goals

- 1 Build upon the zoo’s leadership and expertise in welfare, science, and conservation to improve the lives of individual **animals** and help **populations and ecosystems** thrive
- 2 Deepen the zoo’s **engagement** with a wide range of audiences in Chicago and beyond to promote a culture that cares about and takes action for wildlife
- 3 Create an environment that is **inclusive** and welcoming of **diversity**, and that celebrates the unique qualities, perspectives, values, and experiences of all
- 4 Utilize **technology** to better understand, serve, and engage with our audiences
- 5 Secure a broad and sustainable base of **support** to keep the zoo free while supporting its programs and initiatives



New Year, New Energy

This year has brought many exciting changes and new life to Lincoln Park Zoo. After an uncertain 2020 due to the pandemic, 2021 brought a refreshed energy and appreciation for the wonderful oasis that is Lincoln Park Zoo in the heart of Chicago.

In December, we bid farewell to Kevin J. Bell as President & CEO of Lincoln Park Zoo and welcomed his successor, Megan R. Ross, Ph.D., on January 1. It has been an honor and privilege to represent the zoo alongside both of them, thanks to Kevin’s longstanding commitment to conservation and community engagement and Megan’s innovative approach to individual animal care and welfare.

In just the few first months, Dr. Ross has proven to be a visionary leader and distinguished scientist leading the zoo into this next chapter. The zoo’s commitment to care, community, conservation, and zoo culture is unwavering.

Throughout this report you’ll see the zoo’s work in action. Caring for a new African lion pride along with nearly 200 other species. Conserving Puerto Rican parrots in the Caribbean and protecting migratory corridors in Tanzania. Bringing community together to monitor urban wildlife not only here at home but in Africa and Europe. Striving to ensure diversity of ideas, thoughts, and backgrounds represented in our staff, volunteers, and programs to make sure Lincoln Park Zoo remains For Wildlife. For All.

I hope you are as inspired by this zoo as I am because together, we can create environments where wildlife can thrive in this urbanizing world.

A handwritten signature in black ink, appearing to read 'C. John Mostofi'.

C. John Mostofi
Chairman of the Board of Trustees

The Four Cs

Leading Lincoln Park Zoo has already provided the most rewarding, invigorating, challenging, exciting, and defining moments in my life just within the first few months. Every day I am in awe of the dedication of the staff and volunteers who are committed to the zoo’s mission and vision, and the numerous supporters who ensure this vital work continues to save wildlife.

Just as we raised the bar under Kevin Bell’s leadership for animal care, conservation, horticulture, and community engagement, we will continue to challenge ourselves in the years ahead to meet the highest standards of science and service.

The pillars that hold up our work are the Four Cs:

Care

Lincoln Park Zoo will continue to use science—such as Zoo-Monitor data on animals’ behavior and space use preferences—to let the animals lead the way in improving their welfare. The insights we gain through data will help us enhance their habitats, offer expert care, and understand each animal as an individual.

Conservation

Preserving the flora and fauna of our city and our planet is our responsibility as humans and wildlife stewards. Lincoln Park Zoo will continue expanding its efforts to save wildlife and encourage coexistence both in our backyard and across the globe. The zoo is also increasing support to protect species from trafficking near and far.

Community

Lincoln Park Zoo is a part of a large community of conservation organizations, but Chicago is home. The zoo will continue co-creating programs that engage communities and encourage understanding of local wildlife in the Little Village and North Lawndale neighborhoods as we look to expand into new communities as well. Globally, under the zoo’s leadership, the urban wildlife science community now stretches over three continents. The Urban Wildlife Information Network continues to seek understanding of biodiversity and build wildlife-friendly cities in partnership with city planners and one another.

Culture

Lincoln Park Zoo remains the nation’s only privately-managed free-admission zoo and will remain so at least until 2050. This is who we are: open, accessible, and welcoming for guests from all over the world. Here, we celebrate our differences as strengths. We are growing our internal diversity initiatives and reaching toward our diversity, equity, accessibility, and inclusion goals. We are committed to continually improving accessibility for guests and staff with disabilities. Whether you work at the zoo or visit us, you are part of the “For All” that makes us great.

Meg R Ross

Megan Ross, Ph.D.
President and CEO



Leading the Way for Wildlife

On any given day, Lincoln Park Zoo’s beautiful surroundings offer serenity and a calming, thoughtful way to connect with nature but this is also a bustling, noisy, eye-catching, lively place. Not only is it full of animals exploring, feeding, and enriching themselves through many activity options, it contains dedicated people working for wildlife through various methods—from taking on daily care tasks to researching behavior that will aid in data-driven decision making.

The zoo’s programs encompass high-level concepts within science, conservation, and welfare, but also focus on benefitting individual animals in real-world ways. This past year, this has included a wide range of activities. Not only have zoo initiatives made sure at-risk animals in our care are vaccinated from COVID-19 and protected zoo birds from a destructive strain of avian flu, they’ve assisted with the recovery of the Great Lakes piping plover and provided technical and scientific support to partners like the Serengeti Elephant Project.

As part of this work, the zoo has made additional progress in expanding ZooMonitor, the app that facilitates ongoing animal behavior and space use data collection. This includes adding 27 online tutorials on the app’s use for ZooMonitor volunteers and care staff here at Lincoln Park Zoo, and for users worldwide. It also includes initiating a multi-institutional study coordinating 19 accredited zoos in a study of giraffe behavior, space use, and welfare.

In 2021, 21 peer-reviewed, scientific publications referenced using ZooMonitor for research on gorillas, chimpanzees, giraffes, chickens, ring-tailed lemurs, and bears. To date, 781 institutions in 41 countries have registered for use of the app. At Lincoln Park Zoo, ZooMonitor has assisted in generating 32 reports for animal managers on individuals they care for. It has also fostered new

scientific findings on animal welfare disseminated in 11 professional meetings, two university lectures, four peer-reviewed publications, one scientific poster presentation, 10 talks for the Lincoln Park Zoo community, two Association of Zoos and Aquariums (AZA) newsletters, and two *lpzoo.org* blog posts.

The zoo has also fully integrated its Horticulture Department into its Zoo Programs fold, highlighting the importance of science-based plant care in Lincoln Park Zoo’s mission going forward.

As part of the zoo’s ongoing involvement with the Great Lakes Regional Tree Initiative, grant funds helped support the planting of 25 native trees at Nature Boardwalk. But that’s not all that went into the soil: During this fiscal year, 10,753 individual plants freshened up the zoo’s beautiful campus, including 5,357 annuals, 5,243 perennials, 103 shrubs, and 50 trees added to our accredited arboretum.



Hydrangea | Photo by Christopher Bijalba



African painted dogs | Photo by Christopher Bijalba

Additionally, staff conducted a green roof assessment that reviewed the more than 33,000 square feet of green roof systems on grounds. They also planted four different native milkweed species at Nature Boardwalk as part of AZA’s Monarch SAFE program.

And speaking of SAFE, otherwise known as Saving Animals From Extinction, Lincoln Park Zoo continues to support various species through this important initiative. SAFE leverages the expertise of AZA-accredited institutions to help species.

This year, the African painted dog became the 29th SAFE animal, and Curator of Mammals and Behavioral Husbandry Mike Murray now heads this effort as chair. The goal of the African Painted Dog SAFE is to increase the impact of AZA member organizations in West and Central Africa, East Africa, and Southern Africa. Goals of the new SAFE program include increasing conservation support, raising public awareness of the plight of these highly endangered canines, and building relationships between key field collaborators and AZA zoos.

Increasing the zoo’s international influence in another way, the zoo’s Urban Wildlife Information Network (UWIN) has also expanded its reach. This alliance of ecologists and educators working to help people and animals coexist in urban areas now has 45 partners, including the international cities of Freiburg, Germany and Cape Town, South Africa. These additional partners allow UWIN to more effectively pursue its work monitoring small mammals and other animals that reside in cities. Naturally, the Urban Wildlife Institute continues its work locally as well, coordinating with the City of Chicago and Chicago Animal Care and Control to establish a new Chicago Wildlife Management Plan.



Building Bonds

Lincoln Park Zoo is passionate about using its resources to inspire audiences to act for nature. We are always looking for ways to engage with communities, co-create programs with partners, and interact with diverse audiences in novel ways. During a period that has challenged us to redefine our engagement opportunities throughout the COVID-19 pandemic, the zoo was able to increase and strengthen its programs for everyone, including young people, who wants to advocate for conservation whether here at the zoo or in Chicago neighborhoods.

These efforts included continuing the virtual Artecito program, which connects Little Village families with nature through the arts. The program continues in partnership with OPEN Center for the Arts. A newly-hired community learning facilitator keeps everything running smoothly. This year, Artecito offered free, biweekly virtual programs and added two in-person program pilots at Schwab Rehabilitation Hospital and Toman Public Library in Little Village during fall 2021. Artecito welcomed 1,952 participants throughout the year.

The zoo also piloted an evening virtual program to connect career-minded teens from the True Value Boys and Girls Club in Little Village with guest speakers from Lincoln Park Zoo. And it helped open Douglass 18, an award-winning, community-led, youth-designed mini-golf course with a conservation theme that was supported by local stakeholders over its three-year construction period in North Lawndale.

North Lawndale Employment Network's workforce development campus opened in August 2021 with an Interpretive Plan, informational plant signage, and beautiful, pollinator-friendly landscaping created by Lincoln Park Zoo's Horticulture staff. Staff members also provided plant care and landscape maintenance training on-site.

Closer to home, engagement efforts included offering a virtual Malott Family Zoo Intern Program in 2021, which allowed students to learn and practice professional skills and communications strategies, then create a virtual exhibit for an AZA SAFE species. Zoo efforts also included creating a pilot program that compensated teen artists who participated in Canvas for Conservation by making their designs available through online retailer Threadless. Plus, the zoo provided support to Lincoln Park Zoo and Chicago Zoological Society/Brookfield Zoo teens as they co-hosted a successful virtual conference with Dr. Jane Goodall as speaker; 505 teens logged in to participate.

Zoo Club, a free opportunity for teens to engage with the zoo remotely that began during the first year of the pandemic, remained a way students from all over the world could engage with the zoo through digital programs offered twice per week. Students investigated conservation topics, learned from zoo professionals, and built community. The program recorded more than 612 teen log-ins within the fiscal year.

Teens and their teachers continued to participate in Partners in Fieldwork, the free, year-long program in which students work to collect data at their school sites—but this year, the Student and Teacher Programs team conducted an assessment to make sure the program focused on issues of equity and inclusion. The recommendations that came out of this project will be implemented during the next school year.

Teen alumni of zoo programs were not forgotten. Lincoln Park Zoo was able to pay alumni to support zoo initiatives, such as Zoo Club, Virtual ZooLights, and Canvas for Conservation with Alumni Ambassador positions. Alumni also participated in an in-person reunion in the winter and an internship program in the spring—all ways the zoo can motivate young people while creating connection.

Students weren't the only ones to benefit from empowering zoo programs, of course. For example, our Take Action With Us messaging addresses a more general audience, giving guests and fans of the zoo a way to make a difference with the benefit of Lincoln Park Zoo's data-driven research. Used to great effect by our Guest Engagement, Design, and Marketing and Communications teams, the initiative has to date included incorporating action messages into all animal demonstrations—such as the seal training and feeding presentations, Polar Bear Care, and Monkey Cognition talks—as they return to the schedule. Take Action With Us messages are also being added to signs as they are updated, where appropriate.

On Earth Day 2021, Lincoln Park Zoo launched The Price of Extinction campaign, highlighting endangered species with limited-edition zoo passes that visitors could purchase at the Gift Shop for a donation that correlated to the animal's extinction rate. The project was done in concert with creative advertising agency Energy BBDO, which approached the zoo with the idea. Artist Chiara Vercesi, who donated her time and her designs, provided colorful illustrations for the passes. The project not only helped the zoo raise funds, but also disseminated knowledge about endangered species and gave guests an easy way of taking action for their zoo.

For those who haven't been able to come on-grounds just yet, or simply want to be able to enjoy the zoo from their homes, "The ABCs of Lincoln Park Zoo" video series was launched on the zoo's social media (including the Lincoln Park Zoo YouTube page). It highlights key mission stories and zoo priorities from animal welfare to diversity and inclusion, with some pieces focusing on telling the stories of species like the Jamaican iguana. By using multiple methods that address different audiences through varied media, the zoo is able to impact wildlife and humans in a positive way.

Implementing Inclusion

Lincoln Park Zoo is a place For Wildlife. For All. To that end, our goal is to be an oasis where people, no matter their abilities, socioeconomic status, age, sexual orientation, or beliefs, are welcomed and supported. Everyone can play a part in the type of exploration and empowerment that happens at the zoo. We've made a strong commitment to make sure as many people as possible have that opportunity.

This means diversifying and educating staff. Internally in fiscal year 2022, the zoo has held “zooalogues” designed to break down barriers between employees during candid conversations, hosted its first annual Juneteenth celebration, continued its Spanish Immersion group to improve conversational skills, and implemented a Diversity Action Plan for mentoring employees of color. The zoo has also included LGBTQIA+ topics in mandatory training for onboarding new staff.

Lincoln Park Zoo additionally contracted with the business planning company Global Aspects to launch an employee engagement survey designed to explore strengths and weaknesses of the company's work culture and foster more inclusivity among staff. Zoo administrators are currently working through the insights gained from this survey, which was offered in both English and Spanish, with the goal of creating real change. Additionally, as the zoo needs construction work done on-grounds, proposal requests are now being sent specifically to Minority Business Enterprises and Women Business Enterprises to encourage diverse contractors to apply.

Implementing inclusion also means enhancing tools for guests. The zoo designed an online Lincoln Park Zoo Accessibility Map, which includes multi-sensory information such as where quiet or noisy areas might be, along with the locations of resources for those who might prefer tactile or caption-based learning options. We also developed a Visual Schedule for guests who benefit from the ability to visually arrange icons that represent places and activities at the zoo. This printed resource, which will be available this coming year in English and Spanish, can help guests reflect on their experiences here in an image-friendly way.

Our special events also received these advantages. The zoo's internal LGBTQIA+ committee has become more involved in planning evening events such as Adults Night Out, which means more diverse audiences are attending. ZooLights Presented by ComEd and Invesco QQQ offered two sensory-inclusive nights over the 2021 holiday season and made a dedicated social narrative available to assist individuals in successfully navigating zoo spaces. Virtual ZooLights reached more than 300 guests, giving families from Lincoln Park Zoo's accessibility partners access to the magic of the season.

Lincoln Park Zoo continues to make progress in fostering inclusivity and equity in all its endeavors, big and small, and has been recognized for doing so. In September 2021, Lincoln Park Zoo received AZA's Angela Peterson Excellence in Diversity Award, given to institutions “that are demonstrating transformational leadership in diversity, equity, accessibility, and inclusion.” The zoo also achieved sensory-inclusive certification from accessibility and acceptance nonprofit KultureCity in December 2021, with more than 50 percent of staff and volunteers completing the required training.





Transformations Through Technology

Technology keeps changing the way team members do things here at Lincoln Park Zoo, as we leverage its potential for creating connections and advancing our care, conservation, and community objectives. In 2021, the zoo transitioned to publishing its magazine and annual report online. That allows us to regularly circulate stories that forward our mission with more flexibility; we can distribute an entire publication, or tell individual stories in a way that makes the most impact.

The zoo also incorporated state-of-the-art technology into the design of Pepper Family Wildlife Center, using digital signage, advanced meeting capabilities and animal monitoring platforms to raise the bar, both in terms of promoting positive welfare for the animals in our care and in providing unique and unforgettable guest experiences. For more detail on the planning that went into creating that new exhibit, turn to page 20.

The zoo continues to offer technology-based opportunities to our guests, from digital programs at events to virtual educational programs. We also continually work to find ways of using digital platforms to increase our reach and send out pertinent messages. This past year, that has meant all of the above, plus providing images of cute animals on our ever-growing social media channels and posting requests for proposals to our website to reach more businesses that might want to bid on available jobs. In the future, it means we continue stay alert for additional openings to improve, inform, and inspire.

Growing Support

The last few years have proven difficult for many nonprofit organizations due to the COVID-19 pandemic. Lincoln Park Zoo has not been immune to the effects of the economic downturn—but the loyalty and dedication of zoo supporters has ultimately been one of the most inspiring and uplifting parts of fiscal year 2022’s story.

The community’s commitment to Lincoln Park Zoo has remained incredibly strong for several years now, from the close of *The Pride of Chicago* campaign to the amazing financial commitments from zoo members, donors, trustees and foundations. Additional government support also kept the zoo afloat during an uncertain time.

In fiscal year 2021, COVID-related zoo closures and capacity restrictions resulted in major reductions in earned revenue while zoo expenses remained high. The inability to welcome guests on grounds, hold events, or even offer rides on the carousel created major financial hardship for the zoo’s operations. When it takes more than \$93,000 a day to keep the zoo running, expenses add up quickly.

However, true supporters provided the zoo with necessary funds to keep expert care, community engagement, and conservation initiatives afloat during the pandemic. Indeed, some areas saw all-time highs in contributed revenue.

The dedication of zoo members similarly increased with individuals and families looking to connect with nature and ensuring the zoo remains free and open. Between fiscal years 2020 and 2022 the zoo saw a 17 percent increase in revenue from memberships, and now boasts one of the largest membership totals in the zoo’s history, a testament to how much this oasis means to Chicago.

The steady increases in membership and individual giving have proven that when things get tough, zoo supporters do not waver. So many individual members, donors and other contributors stepped up to boost the zoo’s bottom line and join the zoo family.

And an uptick in individual giving attracts additional investments from other sources, such as government earmarks. In fiscal year 2022, U.S. Rep. Mike Quigley of the 5th District, Illinois State Sen. Sara Feigenholtz and Illinois State Rep. Margaret Croke from the 12th District championed the zoo to receive funding that will allow the zoo to make significant infrastructure improvements necessary to upgrade this historic institution.

As a direct result of philanthropic support and its dependent outcomes, the zoo remains an urban oasis for Chicago residents, an iconic destination for visitors, and a leading animal welfare and research institution. As we continue to experience increases in zoo memberships and gifts from donors, we can further our commitment to keeping the gates open for all and connecting people with the wonders of nature every single day.

Canada lynx | Photo by Christopher Bijalba

A World of Wildlife

Throughout its existence as one of the nation's oldest zoos, Lincoln Park Zoo has always been a place especially welcoming to wildlife. Chimpanzees, red pandas, flamingos, polar bears, seals, and almost 200 other species make this unique Chicago landmark a place full of natural sights, sounds and experiences that become favorite memories for the guests who enter its gates.

This year, many new animals became residents of the zoo. New and returning species came to Pepper Family Wildlife Center, including the red pandas, snow leopards, African lions, and Canada lynx. These individuals also arrived:

- **Three cold-acclimated male Père David's deer.** This deer species was hunted to extinction in China in 1900 and survives because of cooperative breeding programs like the ones at zoos.
- **A pair of prickly-cute prehensile-tailed porcupines.** These arboreal animals can be viewed on a reversed light cycle at Regenstein Small Mammal-Reptile House, since they're normally nocturnal.
- **A tiny, long-tailed northern tree shrew.** This insect-eating southeastern Asian rainforest mammal is 10–18 inches long. Its tail accounts for half its body length and provides balance.
- **A fascinating Carlsbad green tarantula.** These spiders have a mild venom and bristly, stinging hairs. This one was confiscated by U.S. Fish and Wildlife Service officials at O'Hare International Airport due to illegal wildlife trafficking.
- **A gorgeous new red river hog.** Zamu was introduced to resident male Nox at Regenstein African Journey. The two are reddish with white stripes, and both have tusks.
- **Two fluffy new Chilean flamingos.** These beautiful birds hatched in July and, as juveniles, could be easily distinguished from adult flamingos by their downy gray feathers.

- **A striking colobus monkey infant.** Zinga, a female black-and-white colobus monkey, was born in November to Kutaka. Infant colobus monkeys have all-white fur when they're born.
- **A darling infant snow monkey.** Japanese macaque Mito became a mother, giving birth in November to a male named Minato. The birth brought the troop size to 14.
- **An amazing pygmy hippo.** Pogo, a 22-year-old semiaquatic pygmy hippopotamus, joined female Annie in her watery habitat at Regenstein African Journey.
- **A captivating grey seal pup.** Fisher, named for the late Dr. Lester E. Fisher, was born in January to Jersey and Charles. He received round-the-clock care from staff members in lieu of maternal attention.
- **A thriving lion cub.** In March, Zari gave birth to the first lion cub born at Lincoln Park Zoo in 20 years. Monitored closely by staff using Pepper Family Wildlife Center's state-of-the-art tech, the cub quickly surpassed all necessary milestones.



Left to right: Père David's deer, Chilean flamingos, Japanese macaques, African lion cub. Photos by Christopher Bijalba and Jill Dignan.

The Cats Are Back

It was a moment Lincoln Park Zoo staff, volunteers, members, donors, and zoo-goers had imagined and anticipated for years. On October 14, 2021, Lincoln Park Zoo opened its new state-of-the-art habitat, Pepper Family Wildlife Center, with a ribbon cutting ceremony—welcoming lions and other big cats back to the Windy City.

On a day sure to be remembered, visitors watched in awe as the new African lion pride, composed of male Jabari and sisters Cleo, Hasira, and Zari, frolicked and explored the space. Laughter, wonder, and joy filled the air, as those in the crowd came face-to-face with this remarkable species. Sighs of relief could be heard from those involved in the renovation process from start to finish; their hearts were clearly swelling with pride. Marking the end of an era, *The Pride of Chicago* capital campaign was now complete.

Pepper Family Wildlife Center, located at the heart of Main Mall, is a culmination of years of vision, passion, expertise, and data, and reflects Lincoln Park Zoo’s commitment to continuously improve animal care standards and promote the best welfare possible. The 18,300-square-foot lion habitat spans the full northern side of the building and boasts a dynamic space for a pride of lions, with thermal comfort zones for cooling and heating, Forest Stewardship Council-certified trees for climbing, elevated rocks for higher vantage points, areas to seek privacy, shade, and shelter, and special enrichment features—including ziplines for meaty bones.

Green hills, small trees, and tall grasses create a savanna-like atmosphere at Pepper Family Wildlife Center, inviting guests to discover the connection between the prairies of the Midwest and landscapes in Africa.

Once inside the building, guests are reminded of Lincoln Park Zoo’s rich, 153-year-old history. Although brand-new and updated to be accessible for all, the space contains many of the same



Left to right: African lion pride at Pepper Family Wildlife Center. Photos by Lisa Miller, Tom Harris, and Jill Dignan.

historic elements and unique features that distinguished the original, revered lion house. The building, which was designated a Chicago Landmark in 2005, is an exceptional 1912 Arts and Crafts structure with a richly-textured palette of many different colors of brick, terra cotta, clay tile, cast iron, and wood. The building’s most unique feature is its rare Gustavino ceiling of white terra cotta.

The new habitat is not only a space for lions, but also a gift for Chicagoans and visitors from all around the globe. It welcomes guests to connect with the African lion pride through its immersive viewing opportunities from both inside and out, including the Lion Loop (supported by the Women’s Board of Lincoln Park Zoo)—which enables guests to view the animals from the center of the habitat.

One of the main goals of the \$41 million renovation was to create a more expansive and dynamic habitat that would improve overall animal welfare. As a data-based institution, the zoo turned to what it knows best—science. The design of Pepper Family Wild-

life Center was informed by ZooMonitor data collected over the last several years on lion behavior and space use to understand their preferences. One might even say that the lions themselves helped design their new digs. The pride’s behind-the-scenes area was built to facilitate positive relationships with keepers, provide world-class care, and serve as a private space for future denning.

Speaking of creating a space for future offspring: For the first time in 20 years, Lincoln Park Zoo welcomed an African lion cub as part of the African Lion Species Survival Plan®. On March 15, Zari gave birth to a male cub at Pepper Family Wildlife Center. The cub is Zari and Jabari’s first offspring, and both parents continue to show the necessary paternal instincts to care for the young one.

In early May, the zoo announced the cub’s name, Pilipili. It means “pepper” in Swahili and honors the Pepper family, whose generous donation of \$15 million enabled the transformation of

the historic lion house into Pepper Family Wildlife Center. With spots adorning his forehead, paws that are oh-so-big, and a spunky personality, Pilipili has captured the hearts—and attention—of all of Chicago. As he continues to grow in size and strength, Pilipili will have the opportunity to explore and enjoy all of the unique features his habitat has to offer—all due to the science, data, and passion poured into the design of Pepper Family Wildlife Center.

Pepper Family Wildlife Center’s success owes thanks to all those involved in *The Pride of Chicago*. Their vision to improve animal welfare, mission to connect people with nature, and admiration for the magnificent species that reside in the building has helped create a wonderful new habitat that will stand the test of time.

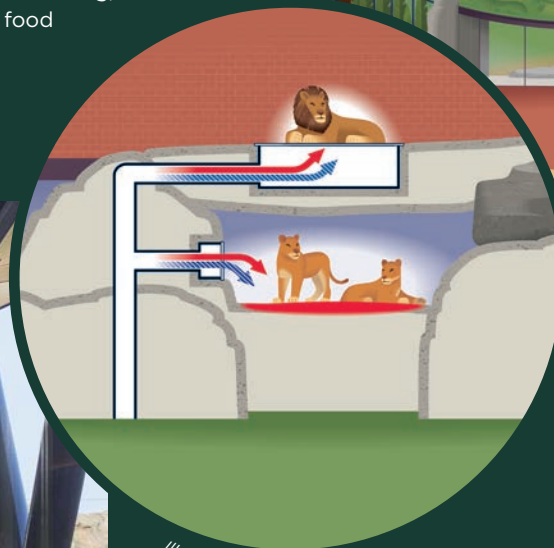
Diving Deep: An Inside Look at Pepper Family Wildlife Center

Pepper Family Wildlife Center is home to a pride of African lions, two Canada lynx, two red pandas, and two snow leopards. Explore the newly renovated state-of-the-art space by learning more about the habitat's unique features.



PRIORITIZING ANIMAL WELFARE AND CARE

Pepper Family Wildlife Center highlights Lincoln Park Zoo's commitment to continually advancing animal welfare and care. The new space, which nearly doubled in size, houses fewer species in order to provide the animals in the zoo's care with more spacious and complex habitats that encourage species-specific behaviors. The savanna-style lion habitat enhances animal choice and welfare through the addition of heating and cooling elements, intricate rockwork, tree structures for climbing, shade cover, and food zip lines.



Illustrations by Steve Musgrave

FOR WILDLIFE. FOR ALL.

No space at Lincoln Park Zoo better exemplifies the zoo's goal of being fully welcoming and accessible to all than Pepper Family Wildlife Center. The renovation process transformed both east and west entrances to the building by eliminating the stairs altogether and creating a centralized pathway that allows guests of all abilities to enter or leave in either direction. In addition, two new accessible public restrooms were added to both entry vestibules.

All zoo-goers are invited to connect with the animals that reside at Pepper Family Wildlife Center with nose-to-nose viewing opportunities from floor to ceiling. At the new "Where's Wildlife" mobile learning station, guests of all ages and abilities can search for animals in a tactile illustration of northern Tanzania, which provides individuals who are blind or have low vision with a powerful new way to connect to wildlife.



HONORING HISTORY

The new habitat celebrates the zoo's rich history through its extensive restoration process. Preservation and restoration of the lion house, a Chicago Landmark, required a careful balance of restoring the building's vintage features while designing new, distinctively modern elements to integrate seamlessly with the more than 100-year-old structure.

Primary restoration of the building focused on the east and west entrances of the building, including brick, stone, and terra cotta masonry repairs; full mortar repointing; and cast-iron arched window and entrance restoration. The original Arts and Crafts paint color scheme, a distinctive, rich, and significant part of the building's authenticity, was also restored with the use of paint microscopy.



PLAYING IT SAFE

Safety was a top priority in the design of Pepper Family Wildlife Center. To eliminate safety hazards for the lions, designers utilized extensive 3D design modeling for lion-jump radiuses from various habitat features. A total of 28 cameras throughout the habitat and holding area provide 24/7 remote visual access to the lion pride.

Keeper safety also remains at the forefront. The building's features enforce protected contact between keepers and the lions throughout the entire habitat and holding area, including during positive reinforcement training sessions. Unique ports allow for voluntary blood draws from the lions' tails. A special platform with protected access underneath enables veterinarians to conduct ultrasounds while the lions are lying down comfortably.



Photo by Christopher Bijalba

TELLING 'TAILS'

A journey through Pepper Family Wildlife Center shares the story of coexistence and the importance of the zoo's conservation efforts in northern Tanzania. Through a narrative focusing on the lion guardians called Ilchokutis, the exhibit demonstrates how local communities are fostering human-lion coexistence in Tanzania. Pepper Family Wildlife Center also tells the story of ZooMonitor, highlighting the importance of science in designing the lion habitat.



Photo by Monica Dalmasso

Guests can explore lion adaptations and conservation with a life-sized two-dimensional replica of an African lion—one male and one female—located on each side of the outdoor lion habitat. Zoo-goers are also invited to learn more about lions and the importance of animal welfare through the Lion Chat facilitated by Lincoln Park Zoo educators.

STEP INSIDE THE SAVANNA

Thanks to the zoo's small but mighty Horticulture team, guests can immerse themselves in a savanna-like atmosphere at Pepper Family Wildlife Center. The landscape design of the habitat was specifically crafted to mimic an African lion's native range and includes more than 100 unique species of plants. Six green roofs were created during the renovation process, helping to keep the building cooler by absorbing heat.



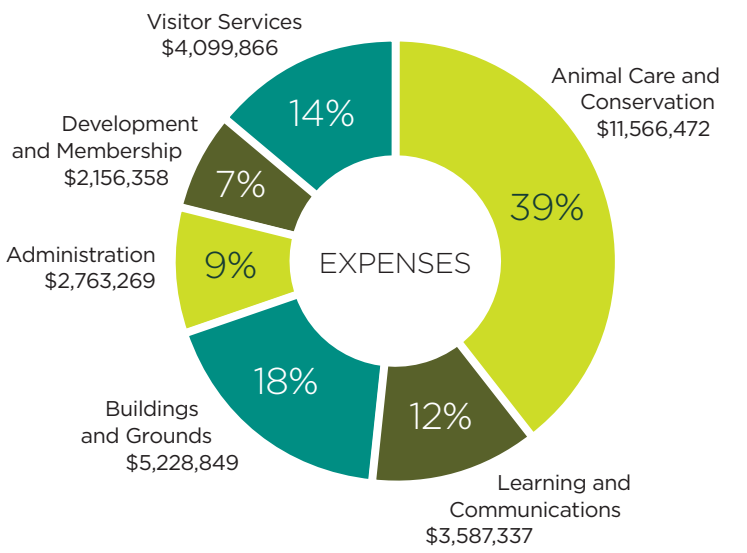
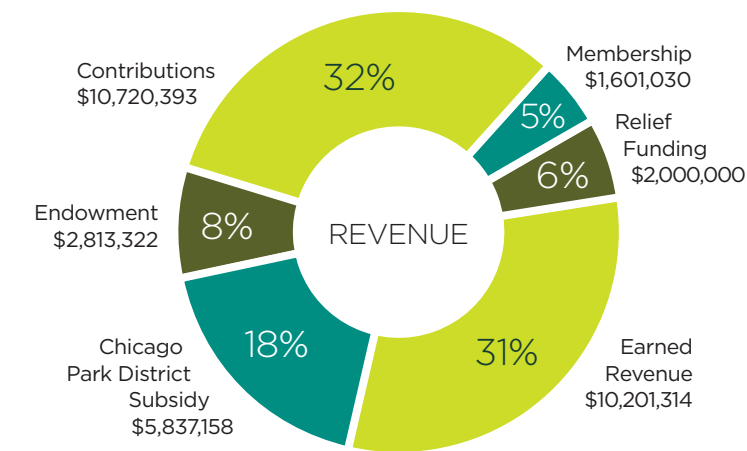
Photo by Mike Murray



Photo by Tom Harris

Financials

FY22 Operating Results (unaudited)



The Lincoln Park Zoological Society Statements of Financial Position – March 31, 2022 and 2021 (unaudited)

ASSETS	FY 2022	FY 2021
Assets		
Cash	16,930,766	14,626,102
Investments	177,390,191	167,804,190
Investments - Other	24,850,787	13,039,189
Receivables		
<i>Pledges and grants, net</i>	12,927,828	15,194,767
<i>Other</i>	1,972,864	199,452
Other Assets	1,157,643	374,674
Property and Equipment, net	2,578,176	2,376,661
Total Assets	237,808,256	213,615,035

LIABILITIES AND NET ASSETS

Liabilities		
Accounts Payable	7,649,267	5,250,225
Annuities Payable	569,835	403,217
Deferred Revenue	479,927	161,206
Accrued Expenses	2,936,843	4,411,692
Paycheck Protection Program	-	5,253,538
Line Of Credit - Construction	1,264,175	-
Bonds Payable, Net of Issuance Costs	70,300,900	70,230,100
Total Liabilities	83,200,947	76,797,426
Net Assets		
Donor Restrictions		
<i>Without Restrictions</i>	67,277,607	49,308,266
<i>With Restrictions</i>	87,329,702	78,596,791
Total Net Assets	154,607,310	127,905,057
Total Liabilities and Net Assets	237,808,256	213,615,035

Lincoln Park Zoo wishes to thank our members, supporters, trustees, donors, community and business partners, colleagues, staff, volunteers, and guests for making our work possible every day. The report covers The Lincoln Park Zoological Society’s fiscal year, which began April 1, 2021 and ended March 31, 2022.

BOARD OF TRUSTEES

OFFICERS

C. John Mostofi, Chairman
Tracey E. Benford, Vice Chair of Finance
Charles Barone, Secretary
Kevin J. Bell, CEO Emeritus
Megan R. Ross, President and CEO

TRUSTEES

Brenda Palms Barber
Kelly Powers Baria
David P. Bolger
Biff Bowman
Michael Collins
James E. Compton
Marsha A. Cruzan
Mareil  Cusack
Ronald DeNard
Francesca M. Edwardson
Polly Eldringhoff
John R. Ettelson
Tarek A. Fadel
Rich Feitler
Denise Stefan Ginascol
Katie H. Gledhill
Lori Goltermann
Douglas C. Grissom
Luis Gutierrez
Ted Haffner
Barbara Higgins
Roger G. Hill II
John M. Holmes
J. Thomas Hurvis
Oscar Johnson
Marci Kaminsky
Karen Stone Kaplan
Elizabeth Karlson
Neil T. Kawashima
Barbara Malott Kizziah
Kandace Lenti
Gregory Leos

Pamela Lucina
John McLinden
Elisabeth C. Meeker
Randy Mehrberg
Elizabeth Mihas
Mr. Jason Miller
Lee Moore
Uche Ndumele
David L. Nichols
Adam Nordin
Greg Pearlman
Scot Pepper
Mr. Richard Poulton
Dr. Mayari A. Pritzker
Ian C. Radomski
Kelly D. Rainko
Susan Regenstein
Myra Reilly
John Rodi
Shannon Schuyler
Dr. Susan Sherman
Joseph Trpik
Tom Walker
Kimbra Walter
Mr. K. Jay Weaver
Sharon Zackfia

EX OFFICIO TRUSTEES

Kristin Baranack
Christine Tierney

LIFE TRUSTEES

Mary B. Babson
William E. Bennett
Terrance J. Bruggeman
Caryn Harris
John H. Hart
Judy Keller
Jonathan Kovler
Lawrence F. Levy
Lynn Martin
Thomas L. McLeary
Dr. Howard C. Morgan
Stuart C. Nathan

James M. Neis
Sarah Pang
Jay Proops
Brian Simmons
Abra Prentice Wilkin
Hossein Youssefi

HONORARY TRUSTEES

Ann P. Andersen
Barbara W. Carr
The Honorable Richard M. Daley
Marshall Field
Robert W. Lane

WOMEN’S BOARD

OFFICERS

Christine Tierney, President
Krista Coan, Vice President, Membership
Mrs. Ela Lewis, Vice President, Programs & Administration
Bonnie Kaufman, Vice President, Development
Jill D. Rein, Secretary
Alice D. Schaff, Treasurer

Jennifer Arquilla Bocik
Katherine Wood Baldwin
Adrienne Barnaby
Reggie Beckman
Cynthia Bridges
Debbie King Bridges
Bridget Campbell
Jennifer Caruso
Debra M. Clamage
Hon. Margaret Croke
Anjana Dalal
Kristen Davis
Karen DiJohn
Marisa Doherty
Patty Eggert

Karen S. Eisenbart Ed. D.
Angela Euston
Lyndsie J. Ferrante
Melissa Filkin
Abby Z. Funk
Enid Gardner
Lisa Genesen
Holly Geraci
Patricia Giannoulas
Meg R. Gilbert
Denise Stefan Ginascol
Angela Haggie
Caroline Huebner
Beth Kies
Cynthia Knapp
Wendy I. Krimins
Sonia Blicharz Larkin
Rita Lashmet
Aida Lutfi
Mary C. MacGregor, D.O.
Maureen Maher
Laura Malec
Rita M. Maltezos
Colleen Mansell
Becky Marquardt
Mary Claire Moll
Charlotte K. Monhart
Shellane Q. Mulcahy
Brigid Najarian
Alyson S. Nash
Amy Olshansky
Kimberly Orput
Carolyn Parr
Mary Pearlman
Allyson Pooley
Jennifer Price
Margaret Rainone
Myra Reilly
Kim Rice
Kirsten Rider
Mia Duchnowski
Kelli Schrade
Marylynne Schwartz
Mrs. Sandi Sheppard

Maura Slattery Boyle
Beth Herrington Stamos
Jennifer L. Statler
Leslie Sulger
Melinda Sherman Swift
Jessica Therivel
Brenda Tran-Keating
Lydia E. Wahlke
Susan Charles Weinstein
Trudene Westerman
Peggy White
Nina B. Winston

ASSOCIATE MEMBERS

Alison Hefe  Bonney
Dr. Vicki M. Boyce
Martha E. Cannis
Susan F. Erler, Ph.D.
Tara Fowler
Katie H. Gledhill
Carol Whittaker Gonsky
Chandra A. Greer
Jean Hagerty
Josephine E. Heindel
Rosemary Jones
Nan Nygaard
Elizabeth A. Parker
Karen V. Peterson Schutz
Carolyn Kae Phillips
Marlene Welsh Phillips
Shirley Welsh Ryan
Diana M. Senior
Martha Peterson Shaw
Pam Sheffield
Joan Leydon Siff
Kimberly Theiss
Nancy A. Trainer
Dana Shepard Treister
Bonnie McBride Uhler
Amy Welzer
Leslie Zentner

LIFE MEMBERS
Judy Keller
Jeanine McNally
Mrs. Barbro T. Reeve
Deborah A. Stocker
Abra Prentice Wilkin
NON-RESIDENT MEMBERS
Mrs. James H. Anderson
Sarah Beardsley
Gale M. Gottlieb
Tricia Heintze
Lesli K. Henderson
E. Courtney Johnson
Lorraine Kaplan
Nancy C. Kelley
Mrs. Jerry K. Pearlman
Maureen Dwyer Smith
Janice Wong

AUXILIARY BOARD

OFFICERS
Kristin Baranack, President
Melissa F. Gold ,Vice President
Andy Georgevich,
Vice President, Development
Alicia McKnight, Treasurer
Anne Margarette Robles,
Secretary

Tara Adams
Lucy Amaro
Laura Armstrong
Leah Babcock
Monica Banasiuk
Marlena Berger
Amy V. Borgmann
Marisa Caperino
Michael Chada
Antonia Chavez
Nicole A. Dawson
Lindsay Deeley
Megan Diglia
Erin Donovan
Margot Ettelson
Colleen Fitzgerald
Kara Fortman
Jessica Fricke
James D. Friedland
Raymond A. Garcia

Helen Goldstein
Carolyn Grunst
Jake Gustafson
Thomas Guzi
Lawrence Henderson
Christopher Horner
Jordan Hughes
AJ Jacobs
Erica Kelly
Sean Kelly
Cassie Kim
Sam Leist
Caitlin Linehan
Brendan Maher
Mila Marshall
Daniel McGinnis
Thomas W. McGrath
Armin Mehic
Austin T. Menzia
Lars M. Montag
Ian Moodie
Annika Najjar
Brooke Nelson
Sean O'Connor
Patrick O'Hara
Robert O'Neill
Ian Ormseth
Aubrey J. Parker
Cole Parker
Hiral Patel
Shelly Rani Patel
Andre Peloquin
Kristy Pennock
William Press
Katherine Molony
Ryan Sawall
Ellen Schwartz
Alex Scull
Jane Simon
Ryan Siska
Johanna Smith
Kelly Spengler
Blake Stanislaw
Ganesh M. Sunder
Cole Sunderland
Stephanie Thomas
Patrick Tobin
Stephen Toth
Kate Turkcan
Sam Tuttleman
Juliette van de Walle
Mia Wagner

Michael Weber
Megan M. Wiegand
Evan Williamson
Elizabeth G. Wylie

SUSTAINER MEMBERS

Rob Adam
Stephen C. Baker
Deborah Ellison Barr
Ramona M. Biliunas
Mark Buechler
John M. Casper
Jessica Q. Coleman
Christopher G. Cook
Stephanie L. Degen
Michael Devine
Vinci Fiandaca
Tara From
Paul Gamboa
Hollis R. Hanover
Roxanne Hori
Christine M. Jack
Karen Stone Kaplan
Melissa Kearney
Barbara Malott Kizziah
Jeffrey Klug
Tina M. Koegel
Howard S. Lanznar
Leslee A. Larson
Robert R. LeClercq
Jennifer P. Martay
Gregory C. Mayer
Zanna Nikitas
Kate Orloff
Greg Pearlman
Allyson Pooley
Danyelle Post
Cherie A. Richardson
Mr. Jacob Ringer
Dugan Schwalm
Christine Sears
Richard L. Sevcik
Tempel J. Smith
Dana Snodgrass
Jennifer Splawski
Annessa M. Staab
Melanie Walsh
Brandon Wood
Hossein Youssefi

NON-RESIDENT MEMBERS
Cassandra A. Becker
Bess Cades
Carley Champlin
Gabrielle LeVert
Jeffrey Loeb
Michael Moore
Rachel Pollock-Sharkey
Kaila Richardson
Jason Eric Schmitt
Mr. Daniel Silverfield
Mrs. Elizabeth D. Vanderkaay
Jan Verweij

HERITAGE SOCIETY

We honor individuals who have made a commitment to the zoo through their estate plans.

Anonymous (71)
Dr. Farida Ahmed, M.D.
Geoffrey A. Anderson
Virginia Anderson
Jennifer Arquilla
Mr. and Mrs. Nicholas C. Babson
The Bail Family
Stu Baker
Christopher and Nancy Mork
Bakker
Dean Balice*
Troy Baresel
Peter and Betsy Barrett
Johny Beaugez
Mr. Kevin J. Bell
Susan Bernstein
Gerald Berstell
Mr. John A. Beton
Ernest and Vanice Billups
David P. Bolger
Helen L. Borows
Mr. Jerome Broekema
Terrance J. Bruggeman
John P. Cahill
Robert G. Cappaert
Dr. David A. Charnota
Della R. Chavez
Carol Christiansen
Debra M. Clamage
Robert S. Chirinko and
Barbara G. Cohen

Sue and Jim Colletti
Reverend* and Mrs. Robert
Collins
Dale Cooney
Alice Cooperman
Ms. Mary P. Cusack
Mr. and Mrs. Peter Czuchra
The Honorable Vi and
Vincent Daley*
Paulette and Dave* Devonald
Ms. Jeanne M. Dianda
Mr. Robert F. Doak
Gwen Matras-Dragutinovich
Raymond Drymalski
Nancy Duke
Judy Eastridge
Nancy and Larry Ebert
Francesca M. Edwardson
Nanci Endliss
Marilyn D. Ezri, M.D.
Tarek and Ann Fadel
Mary and Bruce Feay
Bonnie and Glenn L. Felner
Honor and Gene Ferretti
Ellen Filurin
Christine B. Fisher
Diane Fisher
Dr. Lester E. Fisher*
Paul and Paula Fisher
Mrs. Gregory L. Fugiel
Ms. Linda Fuller
Abby and Don* Funk
Barbara J. Geist
Denise Stefan Ginascol
Meg Givhan and Jon Sollberger
James R. Glass III
The Glunicans
Frederick and Janice Glure
Mr. Jack Goggin
Michael Goldberger
Georgean Goldenberg
Howard Goldstein and
Margaret (Peggy) McGrath
Michael and Amy Gordon
Jean McBride Greene
Barb and Glenn Grossklags
Mr. and Mrs. David D. Grumhaus
Ms. Beth M. Halevy
Ms. Patricia Haneline
Hollis and Mark Hanover
Gina H. Harris
John Hart and Carol Prins

Joyce E. Heidemann
Josephine E. Heindel
Edward Heller
Mary Abbott Hess
Mr. and Mrs. Allen R. Hochfelder
Mary Ann Hoey
Elizabeth B. Hood
Robert J. Horton and
James C. Perry
Mr. and Mrs. Michael J. Hughes
Thomas J. Hulseman and
Esteban Diaz
Dorothy M. Jeffries
Mr. Scott Jones and Dr. Jennifer
Pope
Dr. Anne M. C. Juhasz*
Jack Kanuk
Roberta Arnove Karper and
Don Karper*
Heidi and Ed Keenan
Judy and John Keller
James Kartheiser and Katherine
Kennedy-Kartheiser
Jeri King
Dr. Ann Kinnealey Millman and
Dr. Morton Millman*
Patricia Klemz
Tania M. Kokott-Schmidt
Gary and Jackie Kolesar
Dennis Kravetz
Ms. Mary E. Kreppel and
Mr. David W. Diehl
Karen Krishack
Barbara Lanctot
Jane S. LaRue
Marcia E. Lazar
Andy and Cheryl Loos
Suzanne and Joseph Lysy
Jo Anne Maczulski
Ms. Margaret L. Maczulski
Mr. Gregory J. Mader
Clarence E. Malmin
Melody and Bill* Markham
The Honorable Lynn Martin
and The Honorable
Harry D. Leinenweber
Mrs. Winifred A. Martin
Heidi Massa
Katarinna McBride
Luanne Russ McBride
Nancy A. McDaniel
Anne and Patrick McEnroe

Barbara A. McGraw
Lyn M. McHugh
Thomas McLeary
Elisabeth Meeker
Leah Melber, Ph.D.
Laura L. Metzger
Vicky Miller
Nancie and Stuart* Mishlove
Jeffrey A. Mono
Beverly and Richard* Moody
Bob Murray
Jody Murrie
Scott and Katie Mylenbusch
David W. Narwich
Loretta D. Nestor*
Albert and Nancy* Niemi
Ms. Clarice R. Norin
Mariann O'Brien
Mary J. O'Grady
Mr. and Mrs. Charles Ohrn
Mr. and Mrs. Paul W. Oliver
Anne and Harry Olsen
Carol M. Overman
Bliss Packer and Richard Pleet
Ms. Elizabeth A. Parker and
Mr. Keith S. Crow
Karla D. Petersen
Nancy Peterson and
Robert Benacka
Mrs. Caryl R. Pflughaupt
Betty and Tom Philipsborn
Gordon* and Ineke Phillips
Kenneth and Barbara Piller
Deborah J. Prentiss
D. Elizabeth Price
Mayari Pritzker
Catherine F. Quinlan
Dianne Goren Radtke
Mrs. Alan L. Rappaport
Kimberlee Raymond
Pat Reavy
Ms. Susan L. Regenstein
Gina and Richard* Repko
Carole Reuber
Miss Kathleen Rice and
Mr. Barry A. Sears
Michael O. Rigg
Norm and Edith Riley
Deborah Ritter
Anita Rogers
Harry Q. Rohde
Ben and Barbara Rooks

Debra Rosenberg and
Joseph Boyd
Joel and Jeri Rothman
Cyndi Rotondo
Dr. Sheldon and Paulette Rubin
Dr. Olivia M. Scarse*
Marilyn and Joel Schaffer
Ronald and Joanne Schlacks
K.M. Schramm
Sue Ann Selle
Pam and Tom Sheffield
Terri Sinnott
Sue and Bill Smilie
Rebecca Gray Smith
Demetra K. Soter and
Christopher J. Doyle
Mr. and Mrs. Robert Stanek
M. Steffen
Mr. and Mrs. Robert M.
Stephenson
Thomas W. Stephenson
Dr. Mark W. Stolar
Mrs. Louise A. Stone
Linda Swanson and John Seely
Mary A. Taft
Marcia Jean Taub
Kim and Steve Theiss
Ms. Karen Thomas
Steven D. Thompson and
Debra Kerr
Jack L. Thorson
Ms. Marilyn T. Trice
Phil* and Paula Turner
Judith and Paul Tuszyński
Linda G. Ulreich
Ellen and Jerry Upton
Alice Stephens Valaitis
Linda Vertrees
Mr. Robert G. Walberer
Belle Waldfogel
Dr. Margaret M. Walsh-Reitz
and Mr. Roger L. Reitz
Elizabeth K. Ware
Bruce and Sandra Wechsler
Dianne M. Weinand
Frank R. and Marilyn L. Weiner
Patricia Weiner
Janice Wendland and
Todd R. Murray*
Trudy and Jim Westerman
Susan Knox Wilson
Patricia Wood

Ronald Yenerich and Will Urban
Bryan and Tatiana Young
Eric and Barb Youngquist
Mr. and Mrs. Hossein Youssefi
Caryl Zaar
Dr. Joan E. and
Dr. Russ Zajtchuk
Ms. Candise Zake
Nora Zanarini
Tom and Sherry Zimmerman
Ms. Christine M. Zrinsky

ESTATE GIFTS

Estate of Hall Adams, Jr.
Estate of Carlene Blumenthal
Estate of Norman J. Clemetsen
Estate of Jerry Enenstein
Estate of Lyle Gillman
Estate of Jean A. Griggs
Estate of Katharine C. Gross
Estate of Jeanne Hansen
Estate of Ruth Lekan
Estate of Mary Nordloh
Estate of Theodore M. Utchen
Estate of Carl Vespa
Estate of Alvin Warsaw
Estate of Muriel Jo White

CHARITABLE ANNUITIES ESTABLISHED

James Kartheiser and Katherine
Kennedy-Kartheiser
Kenneth and Barbara Piller
Bruce and Sandra Wechsler

ANNUAL FUND CONTRIBUTORS

We recognize contributors who make vital, unrestricted donations to support our mission.

INDIVIDUALS \$100,000 and above

Anonymous (1)
Ms. Marion S. Searle

\$50,000 to \$99,999

Richard and Margery Feitler
Katie and Brent Gledhill

Sharon Karsten and
Frank Malone
Frederick Meyer Charitable
Trust
Ms. Marsha Steffen
Mrs. Christine Szarek
Walter Family Foundation

\$25,000 to \$49,999

Anonymous
Geoffrey A. Anderson
John and Caroline Ballantine
Charles Barone and
Susan Keiffer
Mr. Peter Barrett and
Mrs. Betsy Barrett
Diane and Michael Beemer
Tracey and Ed Benford
Mr. and Mrs. Buck Betten
Ms. Patricia D. Braun
Noelle C. Brock
Mr. and Mrs. Ted Brownstein
Michele Chaffee and
Adam Nordin
Francesca and John Edwardson
Mr. John R. Ettelson
Mr. and Mrs. Peter D. Fischer
Sue M. Fogarty
Doug and Ann Grissom
Barb and Glenn Grossklags
Gruschow Foundation
The Harris Family Foundation
Joyce E. Heidemann
Hobson Lucas Family
Foundation
J. Thomas Hurvis and
Ann Andersen
Mr. and Mrs. Matthew Kaplan
Mr. and Mrs. Michael L. Keiser
Judy and John Keller
Knowles Foundation
Mr. and Mrs. Norman A. Koglin
Malott Family Foundation
Mansueto Foundation
Elizabeth and Constantine Mihas
Lee and Vicki Moore
Mr. Richard Poulton
Ms. D. Elizabeth Price and
Mr. Lou Yecies
Mr. and Mrs. Joseph Regenstein III
Susan Regenstein and
Barry Frank

*Deceased

Mr. and Mrs. Patrick G. Ryan Mr. Kenneth N. Traisman The Penny Ann Wilson Fund	Ms. Marcia Jean J. Taub Tom and Alison Walker Abra Prentice Wilkin Sharon Zackfia	Nada Andric and James Goettsch Nick and Kristin Anson Ms. Nora Barnicle Mr. James Binsfeld Mr. John P. Blosser Mr. and Mrs. Thomas Bridges Mr. and Mrs. Jeff Burgess Elizabeth S. Clark Ms. Sharon P. Cole Sue and Jim Colletti Rich and Vanessa Copans Mr. and Mrs. Paul Crego Mr. Owen Deutsch and Ms. Rona Talcott Mr. Peter Dimon Ms. Elaine M. Duffens Dr. and Mrs. Sheldon Edelson Polly and William Eldringhoff Mrs. Jerome L. Ettelson Mr. Marshall Field V Mr. William P. Fotis Jim and Karen Frank Thomas and Carol Galuhn Kathryn C. Gamble, D.V.M. Mr. and Mrs. William Stephen Gilboy Carol Gonsky Jean McBride Greene Kay and Ken Hamel Mr. and Mrs. Kenneth M. Harvey Diane Heller Janice L. Honigberg Rose M. Houston Caroline and Charlie Huebner Mr. Michael E. Hughes and Ms. Sandra Notardonato Mr. Thomas Hulseman and Mr. Esteban Diaz Mr. and Mrs. Fruman Jacobson Mrs. Ruth A. Jennings Mr. Thomas M. Jones and Ms. Wendy Schiller Ms. Linda J. Leadbitter and Mr. Chuin Kuo Carol and Larry Levy SuAnne Lopata Francine R. Manilow Ms. Carol M. McDonald Thomas J. and Sue McDowell The Howard and Kennon McKee Charitable Fund	Andy McKenna Elisabeth C. Meeker Mrs. Patricia Miller Ms. Sherrie Myers Ms. Erica Nelson and Mr. Steve Schueppert Alexandra C. and John D. Nichols David and Charmaine Nichols Albert and Nancy* Niemi Mr. Jonah Nolan Carol Overman Peter and Lynsey Pace Karla D. Petersen Gordon* and Ineke Phillips Prospect Hill Foundation Lynne and Ian Radomski Reverend and Mrs. Gordon Reinertsen Kathy and Dave Riddell Hayes and Deanna Ryan Ms. Heidi Schultz Susan and Gary Schuman Carole and Gordon Segal Mr. Arch W. Shaw II Ms. Kay Speyer Patrick Stack and Geeta Kharkar Stack Robert and Mary Stanek Ms. Catherine Stewart and Mr. Geoffrey Smith Linda Swanson and John Seely Ms. Susan E. Thomas Ms. Katherine Tomford and Mr. David Grossman Joe Trpik and Jacee Burnes Mrs. Sarah Walton Carrie and Jay Weaver Elliot Weisenberg, M.D., and Clara Orban, Ph.D. Barb and Steve Wolf Candace and Ivan S. Yee Mr. and Mrs. James Zheng	Aaron and Priscilla Barlow Mr. and Mrs. James J. Belcastro Matt and Christine Boler Amy D. Brody Terrance J. Bruggeman Ron and Nancy Calandra Edward J. Calkins Mr. Mike Carew and Dr. Melissa Marinelli Robert & Terri Cohn Family Foundation Barbara A. Cook Mr. and Mrs. Bruce A. Crown The DiGiuseppe Family Mr. and Mrs. Richard W. Dubberke Laura Ferrell and Grant Riedesel Dr. Lester E. Fisher* Kate Fridholm William and Lynda Gardner Mr. and Mrs. David D. Grumhaus Josephine E. Heindel Mrs. Elizabeth Howard Mr. Felix Huang and Mr. Joshua Lau Mr. and Mrs. David Knapp Dr. Robert A. Kubicka Mr. and Mrs. Sam Lang Mr. and Mrs. Frederick Langrehr Mr. and Mrs. Dan Litchfield Mr. Allan L. Maca Mrs. Melody A. Markham Ms. Melissa Marra Casimir and Caroline Matras Nancy A. McDaniel Gina and Marty McFadden McKee Family Carlette McMullan Dr. and Mrs. Stephen J. Mendak, Jr. Ms. Nancy Meyerson Jeffrey Mono and Steve Greenberg Jason and Keely Moos Mr. Matthew O'Meara and Mrs. Gloria O'Meara Mr. and Mrs. Robert P. Perkaus, Jr. Jean Perkins and Leland Hutchinson Mr. and Mrs. Joseph A. Power, Jr. Patricia Reavy	Mr. Tomm E. Renk Dr. and Mrs. Sheldon B. Rubin Ms. Linda E. Salisbury Karen and Frank Schneider The Schroeder Foundation Ms. Christine B. Sears and Mr. Jeff Heh Ms. Lisa Shapiro-Mendell and Mr. Chad S. Mendell Louis and Nellie Sieg Fund Jennifer L. Statler Mr. Edwin Stebbins Philip and Krista Stec Clayton A. Struve Family Foundation Christina Swindells Drs. Jake and Cyndi Tabel Mrs. Edward K. Uhler Mr. H. G. Ulffers and Mr. Theodore Bloch Ms. Elizabeth K. Ware and Mr. Wally Shah Linda and Michael Welsh The Welzer and Greisch Family Ms. Carole Whipple Ms. Christine M. Zrinsky	Lisa and Geoffrey Dybas Ms. Judy Eastridge Mr. and Mrs. Larry K. Ebert Dr. Karen S. Eisenbart and Mr. Thomas R. Eisenbart Cherelynn A. Elliott Nanci Endliss Ms. Constance A. Etter Dr. and Mrs. Marc S. Feldstein Mr. and Mrs. David Fiandaca John and Geraldine Fiedler Melissa and Adam Filkin Judi Findorff Michelle Finley Jeff and Heather Fleitz Ian and Stacy Fleming Arthur L. Frank, M.D. Marcia Franklin Mr. and Mrs. Cezar M. Froelich Enid G. Gardner Dr. Timothy Garnett and Mr. Peter Slaymaker Gavlin Family Foundation Holly and Peter Geraci Goldstein-McGrath Fund of the DuPage Foundation Ellen Graber Peggy and Steve Hampton Mr. and Mrs. Michael Harms The Hickey Family Foundation Mr. David Hiller The Hinrichs Foundation Bill and Vicki Hood Asher Hooks Ms. Roxanne Hori and Mr. Robert Felsenthal Ellen R. Horween Rebecca Johnston and Jeffrey Maling Suzanne and Daniel Kanter Lorraine and Jon Kaplan Heidi and Ed Keenan Mr. and Mrs. Joshua Carter Guy Castino Mr. Michael T. Clune Rebecca M. Coleman Bob and Jill Delaney, Jr. Mr. and Mrs. Christopher Deutsch Martin and Jennifer Dore Rick and Karen Duffy Ms. Lorrie DuPont	Barry MacLean Mrs. June Maguire Ozmon Sandy and Jerry Manne Mr. and Mrs. Eric Mansell Natasha Matza Mr. and Mrs. John V. N. McClure Mr. and Mrs. Thomas McLeary Pamela G. Meyer Mr. and Ms. Steve R. Milin Moller Family Fndn. Bev Moody Ms. Carolyn J. Mueller Ms. Valerie Mulrooney Mr. David W. Narwich Alyson and Pat Nash Robert and Nancy Northrip Martha C. Nussbaum Ms. Mariann O'Brien Ms. Kimberly Orput and Mr. Steven L. Van der Zanden Pat and Lara Pappas Mr. and Mrs. David S. Parkes Ms. Jacqueline Parks Mr. and Mrs. Reid Poll Henry Pope Foundation Ms. Carol Proesel Jeaneane and John Quinn Mr. Andrew M. Raucci Myra and John Reilly Miss Kathleen Rice and Mr. Barry A. Sears Kirsten and Harold Rider Norman and Edith Riley Don and Julie Rocap Ms. Anita J. Rogers Ms. Doris D. Roskin Mrs. Laura and Mrs. Susan Santiago Schwartz Ms. Roberta Schaffner Ms. Terry Schwartz Elizabeth Sethness Patricia Shah-Nazaroff Shapiro Grynstejn Family Fund of the Jewish Community Foundation Mrs. Victoria M. Skala Sue and Bill Smilie Sue Smith Mr. and Mrs. Nicholas Solano Dr. Demetra K. Soter and Mr. Christopher Doyle Pamela R. Stehmer	Thomas W. Stephenson Ms. Denise Stewart and Mr. George Engeln Mrs. Nancy Suria Jessica and Laurent Therivel Ms. Anna Thomas Richard and Helen Thomas Howard and Jane Tiffen Dana Shepard Treister and Dr. Michael Roy Treister Paula Turner Judith and Paul Tuszyński Ellen and Jerry Upton Mr. James Valderrama and Mrs. Teresa Dimattia Mr. Peter M. Vale Van Dam Charitable Foundation Carolyn E. Winter Mr. Theodore Wong and Ms. Kelly Turner Len and Pat Zolna	Mr. and Mrs. Scott Chafin Deb and Art Clamage Judy and John Coletta Alice Cooperman Nicholas and Katherine Craig Trisha Cremieux Margaret and Patrick Croke Mariah Pearl Cunnick and Christopher C. Scovil Mr. Brendan Daley Alecia Dantico and John Huber Mr. Jason Dantico Patty Delony Ms. Amy T. Dickinson Mr. and Mrs. Frank DiJohn Dr. J. A. Dillon, D.V.M. Maureen Dondlinger Ms. Collette Donoghue Mr. Doug Donoghue Eric and Jodie Draut Jeanette E. Dresdow Ms. Carol P. Eastin Mr. and Mrs. Stephen L. Eastwood Patty and Russ Eggert Ms. Roberta Ellerman Harley P. Esposito Angela and Geoffrey Euston Marilyn D. Ezri, M.D. Lyndsie and Ryan Ferrante Honor and Gene Ferretti Paul and Paula Fisher Ms. Anne E. Fogarty Mr. and Ms. Ryan Fortman Ms. Jane Fouser Mr. Gerald Freedman Joanne Benazzi Friedland Mr. and Mrs. Joel M. Friedman Regan and Philip Friedmann Mr. Jason Fura and Ms. Suzanne Pacey Mr. and Mrs. Joseph M. Furlong J. Patrick and Anne M. Gallagher Ms. Mary Gallery Ms. Emily Garrett Lisa Genesen and David Tabolt The Gerald Norton Foundation Dawn and Eddie Gershman Mr. and Mrs. Camillo A. Ghiron Mr. and Mrs. Frederick W. Glure Mr. and Mrs. Lionel Go Dr. Edward Gong
--	--	---	--	--	--	---	--	---	--

Mr. and Mrs. Michael D. Gordon Sue and Melvin Gray Mr. and Mrs. Joseph Greskoviak Mr. and Mrs. Dennis C. Gross James and Brenda Grusecki Ms. Sandy M. Guettler Mr. and Mrs. Brian Haggie Ms. Catherine L. Hales Drs. Lisa Halliday and Robert Liebman Trish and Harp Harper Mr. and Mrs. Mitchell Harris Mrs. Thomas Hebda Skip and Meg Herman Mr. Gregory Hickey Mrs. J. Dillon Hoey Mr. and Mrs. Michael Hogan Fred and Sandra Holubow Mitch Holzrichter and Carolyn Grunst Mr. Mark Hoppe and Ms. Darlene Reynolds-Hoppe Victoria and John G. Howland Maria R. Hrycelak, M.D. Mr. and Mrs. Glenn Hussar Ms. Amey A. Hutchins Robert and Saran Hutchins Dr. Kenneth W. James Mr. and Mrs. Karl Johnson Mr. and Mrs. Arthur J. Jolie Mrs. Michelle Joseph Diane B. Judge Mr. and Mrs. Wade W. Judge Mr. and Mrs. Steven A. Kadish Ms. Evelyn B. Kadlub Cynthia Kalk Ms. Stephanie Kanter Bonnie and Michael Kaufman John and Charlene Kazmer Ms. Elizabeth J. Kelly Melissa and Dennis Kelly Mr. and Mrs. James H. Kenning Miss Cassie Kim Ms. Tina M. Koegel and Mr. Ron Vesely Ms. Gera-Lind Kolarik Gerald A. & Karen A. Kolschowsky Foundation Mr. David Korman Keith and Valerie Kretchmer Ms. Wendy I. Krimsins Mr. and Mrs. Raymond J. Kroll	Ms. Melissa Lain-Finch and Mr. Robert Finch Margot and Josef Lakonishok Barbara Lancot Mr. Ryan Lawrence and Mrs. Michelle Baranay Lawrence Ms. Maureen Leahy Laurence Leive and Manuel Pereiras Mady and Steve Lesnik Donald Lewis and Nancy Jo Lewis Tadd and Sheli Lindsay Mrs. Karen Lohrbach Ms. Marie A. Lona and Dr. Bradley Coolidge Mrs. Josephine P. Louis Ms. Deborah J. Lucas and Mr. Frederick Snider John Mabie Mr. and Mrs. Gary MacDougal Drs. Mary and Scott MacGregor Ms. Margaret L. Maczulski Mr. Eric Maddix Maureen Maher Mr. Paul W. Makray, Jr. Rita and Louis Maltezos Dr. John F. Marcinak and Ms. Heather Johnstone Ken W. Markgraf Becky Marquardt Cindy Lou Martinez Barbara and John Massey Mat, Inc. Gregory and Heidi Mayer Mr. and Mrs. Jonathan McCulloch Mr. and Mrs. Andrew McNally IV Ms. Laura Milani Donna and Ted Miller Mary Claire and Ken Moll Charlotte and Jim Monhart Ms. Lois Morrison and Mr. Justin Daab Helga Muench Dana and Michael Murphy Dr. Jeanette Murphy and Mr. James Murphy Mr. and Mrs. John R. Murphy Ms. S. Sunny Nelson Joanne Nemerovski	Jon and Kathy Newcomb Mr. David T. Nisius and Ms. Susan M. Fischer Richard E. Nowak Patrick O'Hara Mr. Thomas J. O'Keefe Mr. and Mrs. David Olshansky Kate Orloff Ian Ormseth Bliss Packer and Richard Pleet Ms. Ronna J. Page Mr. and Mrs. Aaron H. Paris Caryle and Bob Perlman Ms. Denise Peterson Mr. and Mrs. Matthew J. Pettinelli Mari Philipsborn and Eric Terman Mr. and Mrs. Thomas D. Philipsborn Mr. Michael J. Pifko Mrs. Rachel R. Pollock-Sharkey Allyson Pooley Christian A. Precht Dr. Mayari A. Pritzker Mr. and Mrs. Dennis B. Propp Ms. Anna Quillen Mr. and Mrs. Robert E. Rainone Mr. William Rakoczy Mr. and Mrs. Shawn Recinto Ms. Virginia Repko Mr. Ethan Revsin Kim Rice Mr. and Mrs. Jacob Ringer Ms. Dona Robbins Cohen and Mr. Howard Cohen Phyllis J. Robinson Ms. Jeanne Rogers R. Timothy and Susan K. Rooney Mr. and Mrs. Mark E. Rose Judith F. and Thomas D. Rutherford Mr. John Salvino Mr. Michael C. Schaeffer and Ms. Michelle L. Maton Marilyn and Joel Schaffer Herb Schneider Ms. Sandy Schneider Todd and Kelli Schrade K. M. Schramm Ira and Beverly Schulman	Gloria and Bill Sedlacek Mr. and Mrs. Barre Seid Ms. Patricia Senner Mary Beth Shea Pam and Tom Sheffield Ms. Elizabeth Shepherd Mr. and Mrs. Michael Sheppard Dr. Mark and Nikki Shields Ms. Wilma J. Smelcer Barbara Smith and Timothy Burroughs Mr. and Mrs. Edward Byron Smith, Jr. Mr. and Mrs. Peter C. Smith Christina and Robert Smolen Mr. and Mrs. Patrick J. Songer Howard and Juanita Spanogle Miss Dawn M. Stanislaw Emmy and Steve Stanley Matthew Steinmetz Bill and Alison Stewart Mrs. Susan Stone Mrs. Patricia Sullivan Ganesh M. Sunder John and Jill Svoboda Mr. and Mrs. Calvin D. Swartzentruber Mr. and Mrs. Blake H. Swift Mr. and Mrs. James Tammi Mr. and Mrs. Gregory Taubeneck Mrs. Virginia Thomas Mr. and Mrs. Phillip C. Thompson Mr. and Mrs. Michael G. Timmers Anne Tobey George Torres Anne and Tony Toulouse Mr. and Mrs. Thomas M. Tully, Sr. Kate Turkcan Mr. and Mrs. Richard E. Uihlein Ms. Julie P. Victor and Mr. Clyde Partner Mr. and Mrs. Jonathan Vogel Mr. and Mrs. Jeffrey G. Vogelsang Ms. Joan E. Waggoner Ms. Lydia E. Wahlke and Mr. Andrew M. Johnstone Walsh Family Mr. and Mrs. James Webb	Sandra and Bruce Wechsler Mrs. Susan Charles Weinstein and Mr. Eric Weinstein Ms. Janice Wendland Ms. Stephanie Werner Trudy and Jim Westerman Mrs. Thomas Whennen Mr. and Mrs. Brian J. White Mrs. Cynthia Whybrow Mrs. Megan M. Wiegand and Mr. Chad Levine Mr. Richard J. Williams Tom Wiltzius and Patricia O'Donnell Nina B. Winston Mr. and Mrs. Arthur Wirtz III Sarah R. Wolff and Joel L. Handelman Mr. Kenneth A. Youga The Young Family Ms. Donna Zarcone Ms. Christine A. Zielinski and Mr. Brian Unterborn Kurt and Jennifer Zitzner	\$500 to \$999 Anonymous (13) Mr. John Agaciak Mr. and Mrs. Jeff Aldridge Sandra Jo Allen and S. James Perlow Alleyne Family Mr. and Mrs. Peter B. Allport Ms. C. J. Althage Ms. Theodora Anastaplo Mr. and Mrs. Arthur H. Anderson Dr. Michael Angell and Dr. Jennifer Harper Animal Care Expeditors, Inc. Mrs. Corrine Archbell Michael and Elizabeth Babbitt Stephen C. Baker Katherine and Kirk Baldwin Kristin Baranack and David Tutrone Mr. Richard H. Barden Adrienne Barnaby Bill and Christine Barry Mr. Randy G. Bartosh Mr. Benjamin Bartram Mr. Stephen M. Bartram, Jr.	Mary Ann Bass Ms. Julie E. Baumeister and Mr. Daniel P. Baumeister Mr. Matt Bayer and Ms. Joyce Yaung Ms. Reggie Beckman and Dr. Timothy N. Merrill Mr. and Mrs. Peter G. Beemsterboer Mr. and Mrs. Scott Bellgrau Mr. and Mrs. William E. Bennett Mr. and Mrs. Kelley A. Bergstrom Mr. and Mrs. William J. Bettman Tracy and William Billows Michael and Diane Blake Mr. and Ms. John Blaser Boca Grande Woman's Club, Inc. Dr. and Mrs. Stephen D. Boren, M.D. Dr. Diana Bowen Mrs. Colleen Bower Ms. Myriah H. Brown and Mr. Arnaldo Rivera Mr. Tom Brown Mr. Mark Buechler and Mr. Danny Kirk Mr. John F. Byrd Mr. and Mrs. Louis P. Cain Mr. Charles Callahan and Mrs. Naila Britain-Callahan Mr. and Mrs. Matthew Campbell Tom and Dianne Campbell Mr. and Mrs. Frank Campise Susan and Michael Canmann Miss Marisa Q. Caperino Mrs. Janell R. Cardinal Mrs. Tammy Carmody Ms. Lisa Cartwright and Mr. Stephen Cano Mr. Michael Chada and Dr. Marlena Berger Chicago Sport and Social Club Ms. Diane D. Clarke Krista and Erick Coan Mr. Robert B. Cole Mr. and Ms. Greg Coleman Mrs. Adrian W. Collins Mr. and Mrs. Christopher G. Cook Mr. Alan R. Cravitz and Mrs. Charlotte Caudill	Crowe Foundation Elizabeth Crowe-Joong Mr. and Mrs. Andrew Cupps Lisa and John Curran Mrs. Christina Dabrowski Anjana Dalal and Dirk Mueller-Ingrand Mr. Kenneth Davis Mr. and Mrs. Thomas J. Davis Nicole A. Dawson Ms. Nancy Dehmlow Mrs. Joanna Deming Andrew and Melissa Demopoulos Ronald and Tina DeNard Mr. Jeffrey Dennis Mrs. Alisa dePedro Ms. Judith M. Desenis and Mr. Scott Peterson The Devine Family Paulette Devonald Kathryn Ditmars and James Pranger Mr. and Mrs. Robert Doherty Erin Donovan Dr. Kara Driscoll and Mr. Derek Neathery Mr. and Mrs. Alexander Duchnowski Sheila Dulin Mr. Joseph and Mrs. Kathleen Dunigan Mr. Gary Dupuis and Ms. Virginia V. Mann Linda L. Egebrecht Mr. Tony El Habr Mr. and Ms. Thomas C. Eley III Susie and Tony Ellis Susan and Bryan Erler Ms. Margot Ettelson and Mr. Joshua Ruff Dr. Lisa Faust Mr. Reed M. Fellars and Mrs. Reven Uihlein-Fellars Linda M. Finland Mr. and Ms. John H. Fiore Mr. and Mrs. Shane Fitzgerald Mr. and Mrs. John Fitzpatrick Ms. Gloria V. Fletcher Mr. and Mrs. Fred C. Flosi Norma J. Flynn Foley Family Foundation	Mr. and Mrs. Mike Foresman Mr. Nelson Forsberg Mr. and Mrs. Kenton A. Foutty Dr. Benjamin Frank Ms. Janet C. Franz John and Cathy Freechack James D. Friedland Howard and Bunny Frum Abby and Don* Funk Mr. Nathan Galer Mr. and Mrs. Nick Gawrit Ms. Julie L. Gentes Mr. and Mrs. Austin Getchell Mr. and Mrs. Christos Giannoulas Meg and Matthew Gilbert Elizabeth Gillette and David Lively Ms. Mary Gleason Mrs. Melissa Glyman Goldberg-Remington Family Mr. Samuel Goodman and Ms. Elizabeth Eccher Mr. Robert J. Gordon Gale and Jay Gottlieb Ms. Ingrid E. Gould and Mr. Robert C. Hsiung Mr. Michael Graff and Mrs. Nancy Lerman Linda D. and Craig C. Grannon Sally Greco Ms. Judith Green Mrs. Christina Greviskes Margaret E. Grinnell Luis Gutierrez Mr. Thomas Guzi Holley Hall Mr. and Mrs. John R. Hall Ms. Sophia H. Hall Hollis and Mark Hanover Mr. David L. Harper Dr. Terrill Harrington, M.D. Joanne Heal Mrs. Ellenanne Heine Mr. and Mrs. Arnette Heintze Mr. Lawrence Henderson Scott and Laura Henricks Ms. Genevieve Hillis and Mr. Brian Kocinski James and Margot Hinchliff Ms. Camille Hinrichs Richard and Joyce Hirsch	Mr. and Mrs. Guenter Hitsch Janelle Hoekstra and James McMullin Dr. and Mrs. Richard A. Hogan Elizabeth B. Hood Peter and Susan Hood Ms. Min Hu Dr. and Mrs. Tsengen Hu Ms. Claudia C. Hueser Patricia J. Hurley Jeff Husserl and Valerie Ware Mr. Craig T. Ingram Italian Village Restaurant Steven and Catherine Jacob AJ Jacobs Joseph and Jessica Janicki Mrs. Alicia Johnson E. Courtney Johnson Mr. Steven C. Johnson and Ms. Katrina Wittkamp Mr. Scott Jones and Dr. Jennifer Pope Kathleen T. Jordan Ms. Robin Jordan Jeff and Lisa Jozwiak Mr. and Mrs. Irv Kagan Chris Karalis Mr. and Mrs. Robert Karp Mr. and Mrs. Edward Karsten Loraine Kaufman Foundation - Lori and Steve Kaufman Mr. Jeremy Kazan and Ms. Kendra Thulin Ms. Melissa A. Kearney Ms. Kelly Keil and Mr. Brandon Ewing Mr. Basil Kezios and Ms. Carole Heiman-Kezios Mr. Richard W. Kieffer Mr. and Mrs. William Kies Mr. and Mrs. Thomas L. Kittle-Kamp Mr. and Mrs. Chris Klingenstein Mark and Shawn Kmety Mr. and Mrs. Jeff Knecht Ms. Susan Knodle and Mrs. Jennifer Kaplan Mr. Jason Kornbluth-Cohen Mr. and Mrs. David J. Kostelansky Lottie and Monica Kowalski Ms. Elizabeth Krauss	Michael and Patricia Kremin Mr. and Mrs. Robert Krumstok Mr. and Mrs. Neal Kulick Mr. and Mrs. Ivan Kushen Ms. Nancy Kvamme Ms. Deanna Laidler Mr. and Mrs. Michael Lambesis Mr. Eric LaMora Mr. and Mrs. Howard S. Lanznar Mr. and Mrs. Craig Lashmet Mr. Bryan Lazorik and Mr. Gary Malacina Nate and Anne Lebak Mr. and Mrs. Terrence LeFevour Mr. and Mrs. Tim LeFevour Ms. Dominique Leonardi Mr. and Mrs. Jonathan Lewis Mr. and Mrs. Robert H. Libby Mr. and Mrs. Richard Liberson Ms. Heather Liebal Mr. and Mrs. Andrew Lindblad Ken and Erica Liss Dr. and Ms. Melvin Lopata In memory of June M. Luc Ms. Nancy Lucena and Mr. Christopher Loehman Aida and Rami Lutfi Ms. Judith Macior Jo Anne Maczulski Dr. Victor S. Magar and Ms. Deborah Oestreicher Seth Magle, Ph.D. Mr. Brendan Maher and Ms. Marie Hollister Mrs. Richard A. Makarski Mr. and Mrs. Jeff Malec Joanna Mallers Dr. Elizabeth A. Marcus and Mr. Ira J. Belcove Mr. Charles A. Marien and Ms. Gabriele Kuhn Mr. Jeremy Marmer and Ms. Sivakami Thayu Ms. Kim Marsh Mr. and Mrs. David W. Martay Vicki and Mark Martin Dr. Kelly Maxwell and Mr. David B. Baker Ms. Joan M. Mazurek Linda B. McCabe Mr. Timothy McCutcheon Ms. Mary Beth McDonough
---	--	---	---	--	---	--	---	--	--	--

Mr. Ric McDonough	Marty Peterson and Andy Shaw	Mrs. Mary A. Schwartz and Mr. Richard H. Brewer	Dr. Michael Thomas	Mr. and Mrs. David Adamek	Katherine Bowen	Mr. and Ms. Andrew Czaja	Mr. and Mrs. Paul Gamboa	Ms. Dee E. Hinger	David P. Kimball
Anne M. and Patrick J. McEnroe	Mr. Bruce Philipson	Ms. Stephanie Thomas	Ms. Stephanie Thomas	Mr. Brian Adams	Jan Bowers and Will Linder	Mr. Dan Daly and Ms. Randi Whitman	Mr. and Mrs. Raymond Garcia	Mr. and Dr. Richard Hobbs	Mr. and Mrs. Rajeev Kinra
Ms. Carol McGillivray	Marlene Welsh Phillips	Mrs. Brenda Tran-Keating and Mr. Terry Keating	Mrs. Brenda Tran-Keating and Mr. Terry Keating	Mr. Cyrus H. Adams	Dr. Vicki M. Boyce	Mr. and Mrs. Bill Davidson	Mr. Raymond A. Garcia	Mr. and Mrs. Mike Hofmann	Dr. Jay and Mrs. Georgianna Kleiman
Mr. Thomas W. McGrath	Mr. and Mx. Michael P. Pichla	Mr. and Mrs. Richard J. L. Senior	Mr. and Mrs. Richard J. L. Senior	Tara Adams	Ms. Demetra Brand	Dr. Lloyd A. Davidson	Ms. Sally D. Garon and Mr. Michael Goldman	Mr. George M. Houhanis and Ms. Sarah Johnson	Mrs. Yana Koknayeva
Barbara McGraw	Mr. and Mrs. Craig A. Pickenpough	Mr. and Mrs. Robert Tucker	Jennifer and Barton Tretheway	Heather and Tyler Adkerson	Mr. Sam Bricker and Family	Ms. Sandra G. Davidson	Mr. Frank Garrett	Dr. Christine Hsieh and Mr. Sudhir Penugonda	Mr. Miles Korth
Mr. and Mrs. Dave McKnight	Mr. and Mrs. Douglas J. Pierce	Mr. and Mrs. Patrick J. Shaughnessy	Mr. and Mrs. Robert Tucker	Mr. Kristopher Allen	Mr. and Mrs. Jeff Brody	Mr. and Mrs. Dave Davis	Robert and Linda Garro	Mr. Zhao Hu	Mr. Scott Kramer
Ms. Molly McShane and Mr. George Schaefer	The Tim Pohl Family	Jeanine M. Sheehan	Mr. Mark D. Untiedt	Mrs. Maril Alsup	Mr. and Mrs. Robert Brolin	Mrs. Katherine Davis	Mr. Sergio Gaytan	Mr. Christopher Huemmer	Ms. Sarah Krause and Mr. Ted Butler
John and Ashley Medio	Danyelle and Craig Post	Mr. Jerrold Sheer and Ms. Laurie Mackenzie	Mrs. Jaclynn Van Hout	Mr. and Ms. Joe Amara	Patricia and Lawrence Brottman	Ms. Wendy Day	Mrs. Katherine Geant	Mrs. Jordan E. Hughes and Mr. James Hurley	Ms. Eileen M. Kravitz
Mr. and Mrs. Brian J. Meek	Mrs. Christine Post-Duncan and Mr. Richard Duncan	Ms. Culleen Siebert	Vincent D. Vinci	Mr. Michael C. Andrews and Mr. Ryan Ruskin	Thomas and Carolyn Brown	Mrs. Cory Dehnee	Barbara J. Geist	Ms. N. J. Hunt and Mr. B.E. Miller	Judith F. Kreczmer
Mr. Armin Mehic and Ms. Lynnie Hickey-Mehic	Ms. Barbara F. Potter	Mr. and Mrs. Craig A. Simon	Mr. and Mrs. Michael Walsh	Mr. Joseph Antonini	Mr. and Mrs. Carey Brunelli	Mr. and Mrs. Roy E. Deters	Dr. and Mrs. Mark Gendleman	Ms. Rina Hunter	Karen and Ron Krefman
Mr. Sanjay Mehta	Paul and Anne Poy	Mr. Ryan Siska	Megan and Brad Weiland	Arthur and Marcia Arfa	Mr. and Mrs. Dan Brunnert	Ms. Patricia Detrie and Mr. Russell Hunt	Andy Georgevich	Mr. Beck A. Hur	Brian Kreider and Eileen Chin
Mr. and Mrs. James R. Meindl	Mr. and Mrs. Ryan Price	Ms. Christine Skoczylas	Steve and Lorraine Weiss	Robin and Andrew Arkin	Mr. and Mr. Paul Buescher	Mr. and Mrs. John H. Deutsch	Georgean Goldenberg	Ms. Jill M. Hutchison	Mr. Aswin Krishnamoorthy
Mr. Austin T. Menzia	Ms. Patricia Prince	Mr. Austin Sky-Kappler	Mr. and Mrs. Bartholomew Weldon	Dr. Shana and Dr. Rob Armentano	Mr. Mark M. Burleigh and Ms. Julie Swift	Ms. Lisa Diehlmann and Mr. William Deakin	Miss Helen K. Goldstein	Mr. Juan Carlos Intriago Velez	Mr. and Mrs. Robert J. Kuehnau, Jr.
George and Gerry Messenger	Dr. H. Jay Przybylo	Dr. Todd J. Slager	Magnes Welsh	Mr. Warren Arnold and Ms. Wendy Kabaker	Robin Burns	Mr. Ben Dieterich and Mrs. Amanda Dieterich	Dr. Lori A. Goodhartz	Ellen Isaacson	Ms. Sarah Kull and Mr. Tyler Alfermann
Laura L. Metzger	Steve and Melissa Quick	The Honorable Maura Ann Slattery Boyle and Mr. William G. Boyle	Mr. Dana Westfall and Ms. Nicole Van Haverbeke	Emily and Randy Wexler	Mr. and Mrs. Andrew Butler	Dr. Catherine Dimou	Mr. and Mrs. David B. Goodman	Mr. and Mrs. Mark Israel	Dr. Cynthia LaFond
Bob and Jean Meyers	Dianne Goren Radtke and Steven Radtke	Mr. Timothy Wheeler	Mr. and Mrs. Charles D. Wolf	Mr. Timothy Wheeler	John Wm. Butler, Jr. and John M. VanderLinden	Ms. Grace Bzdawka	Mr. and Mrs. Ronald Gorski	Mr. and Mrs. Alan Jagnandan	Mr. Nicholas Lagoni
Stephen and Lenore Micatka	Mark and Nancy Ratner	Thomas M. and Linda D. White	Ms. Catherine Wertjes	Thomas M. and Linda D. White	Ms. Grace Bzdawka	Mr. and Mrs. Sean Cahill	Mr. Eugene Grabinski and Ms. Ann Summers	Mr. Thomas Jakobsen	Lanski Family
Mr. and Mrs. Charles Michod	Jill D. Rein	Mr. Mark Wilcox and Ms. Catherine Wertjes	Allison and Spencer Williams	Mr. and Mrs. Phillip Babcock	Mr. and Mrs. Sean Cahill	Ms. Doris Cajigas	Mr. Keith A. Graff and Mrs. Tina Tian	Ms. Debra Janiszewski	Mr. and Mrs. Frank F. Laskero
Paige and Haakon Midness	Mr. and Mrs. Charles E. Reiter III	Carolyn J. Winje and Michael Kravitz	Carolyne J. Winje and Michael Kravitz	Ms. Eleanor Baethke	Ms. Doris Cajigas	Mr. and Mrs. Nicholas Calvelli	Ms. Megan Graham	Ms. Janice A. Jarnholm	Mr. and Mrs. Brian G. Lawrie
Jeff and Susan Miller	Esther Reiter	Dr. Stephen E. Soppet	Melanie Wojtulewicz and Tony Crowe	Dr. April Baier	Mr. and Mrs. Dan Baker	Mr. and Mrs. Robert Cardella	Paul and Suzanne Granoff	Dr. Ronald A. Javitch	Mr. Scott Lebin
Ms. Marilyn J. Miller	Mr. Thomas M. Remec and Ms. Susan C. Morisato	Mr. and Mrs. Rob Spengler	Mr. and Mrs. Charles D. Wolf	Ms. Rita Bailey	Mr. Christopher Barnard	Mr. and Mrs. Mark A. Carroll	Mrs. Leslie Green	Mrs. Carolyn Jaw	Ms. Kelsey Ledyard Rojas
Marla J. Molinelli	Cherie A. Richardson	Dr. Jennifer Splawski	Mr. and Mrs. Leonard Wolfe	Mr. and Mrs. Dan Baker	Mr. Earl Barnes	Dr. and Mrs. Matt Carson	Mx. and Mrs. Timothy Greening	Mr. Scott Jessee	Ms. Vivian W. Lee and Mr. Matt James
Mr. Lars M. Montag	Robert and Liz Richardson	Mr. Gus S. Stamatakis and Ms. Nancy Laho	Dorothy and Eric Wolff	Mr. Christopher Barnard	Ms. Juana Barrera and Mr. William Teeple	Mr. Alan Cartwright	Miss Loyanna Grierson	Ms. Lena Jessen	Mr. Travis Lenkner and Ms. Erin Delaney
Mr. and Mrs. Thomas F. Moran	Mr. and Ms. Tom J. Rieckelman	Ms. Jocelyn Stanley	Susan and Michael Wolz	Mr. William Teeple	Mrs. Charlotte W. Barsano and Mr. Kevin Barsano	Dr. Benjamin P. Caughlin	Ms. Wendy Gross and Mr. William DeWoskin	Mr. and Mrs. Sanjeev Jindal	Ms. Lauren Lesko
Mr. and Mrs. David Mui	Mr. Edward W. Roloson	Dr. Frederic Starr and Dr. Rosally Starr	Mr. Andrew Wong and Dr. Tina Nguyen	Mr. and Mrs. Charles D. Wolf	Dr. Rachel Baskin	Susan J. Cellmer and Jeffrey C. Neal	Mr. and Mrs. Jeffrey Grossman	Mr. and Mrs. Henry T. Johanet	Mr. and Mrs. Craig Leslie
Thomas and Shellane Mulcahy	Mr. and Mrs. Michael C. Rothman	Nikki and Fred Stein	Mr. Brandon Wood and Ms. Mary Young	Mr. and Mrs. Leonard Wolfe	Mr. William Bauer and Ms. Tahmina Khanom	Mr. Jack Chen	Ms. Rosemarie R. Eck	Mr. W. T. Eveland	Ms. Heidi D. Levin
Mr. John Murphy	Ms. Kristy Roy and Mr. Clayton McArthur	The Steinmeyer Family	Mrs. Anne Wright	Dorothy and Eric Wolff	Mr. and Mrs. Michael Cioffi	Mr. Joseph M. Chiczewski	Jon Ekdahl and Marsha Opp	Dr. Jada Johnson	Mr. Jeffrey Levine and Ms. Molly-Rose Arnstein
Annie and Mike Murray	Ms. Suzanne E. Rubey	Stephanie Cutter Group	Mr. and Mrs. Michael A. Wychocki	Susan and Michael Wolz	Mrs. Alison C. Claus	Mr. and Mrs. Kang Moy Chiu	Mr. Justin Elliott	Mr. and Mrs. Jerry D. Johnson	Ms. Haitao Li
Mrs. Mary Nagelvoort	Mrs. David S. Ruder	Phillip and Leslie Stern	Mr. and Ms. Michael Wyne	Mr. Andrew Wong and Dr. Tina Nguyen	Dr. Catherine A. Clinton and Mr. Edward X. Clinton	Mr. and Mrs. Michael Cioffi	Mr. and Mrs. John Dyer	Mr. Ralph Johnson and Ms. Kathleen Nagle	Dr. Todd Lightfoot and Ms. Sarah Zelonis
Mr. and Mrs. Jon Najarian	Sarah Rutledge	Mrs. Louise A. Stone	Dr. Kai Lee Yap	Dr. Frederic Starr and Dr. Rosally Starr	Ms. Mary L. Coclanes	Mrs. Jennifer Enloe	Mr. and Mrs. John Dyer	Mr. Terry D. Johnson and Ms. Alison D. Sparks-Johnson	Mr. and Mrs. Michael T. Hannafan
Ms. Nancy Newberger	Mr. and Ms. David Salsburg	Mr. and Mrs. Alden Sulger	Eric and Barb Youngquist	Dr. Stephen E. Soppet	Mrs. Carole S. Cohen	Mr. and Mrs. James A. Erwin	Mr. and Mrs. Patrick Dunneback	Mr. and Mrs. Scott M. Kaplan	Roberta Karper
Lynne Considine Nieman	Liz and Richard Saltzman	Mr. Walter Swiston	Dr. Joan E. and Dr. Russ Zajtchuk	Mr. and Mrs. Rob Spengler	Mr. and Mrs. Stephen Colelli	Mr. Allan R. Ettinger and Ms. Saiji Wongpinit	Mr. and Mrs. John Dyer	Ms. Lena Jessen	Anil Kashyap
Aram and Zanna Nikitas	Mr. and Mrs. John Scala	Stephanie Cutter Group	Mr. and Mrs. Kent Zandstra	Mr. and Mrs. Rob Spengler	Miss Madelynn Conlin	Ms. Sarah Finch	The Ebbott Family	Ms. Lisa J. Hansen	Ms. Anil Kashyap
Ted and Sandra Notz	Alice D. and Peter H. Schaff	Phillip and Leslie Stern	Mr. and Mrs. Robert K. Zentner	Mr. and Mrs. Rob Spengler	Mr. and Mrs. Kevin J. Connolly	Mr. Maxwell Firestein	Ms. Rosemarie R. Eck	Mr. and Mrs. John Harder	Mrs. Janis Katz
Michael J. O'Brien	Ms. Dominic Schagar- Dombroski and Mr. Matthew Dombroski	Mrs. Louise A. Stone	Mr. and Mrs. Ron Ziff	Dr. Jennifer Splawski	Miss Linda Flores	Ms. Lisa Cotton	Jon Ekdahl and Marsha Opp	Ms. Maureen Harney	Ms. Julie A. Katz
Ms. Meghan M. O'Donnell and Mr. Ralph DePasquale	Ms. Joanne Schalk	Mr. and Mrs. Alden Sulger	Mr. and Mrs. Arie Zoller	Mr. and Mrs. Robert N. Szalay	Mr. and Mrs. Edward C. Coughlin	Ms. Kelly Flowers	Mrs. Patricia Guerra	Ms. Caren Harris	Krista D. Kauper
Mr. Matthew Ohzourk	Mr. and Mrs. Tom Schembari	Mr. and Mrs. Alden Sulger		Mr. and Mrs. John P. Tamisiea	Mr. and Mrs. Don Cowan	Tara Fowler	Mrs. Ellyn Gullo	Ms. Karen M. Hart	Dr. Rebecca Keating
Virginia Olsen	Kenneth J. Schenatzki	Mr. and Mrs. Alden Sulger		Tod Tappert and John Gallagher	Dan and Mary Beth Cox	Mr. and Mrs. Christopher Frech	Ms. Mary Guzan	Ms. Julianne M. Hartzell	Mr. and Mrs. J. Bradley Keck
Peyton and Susan Owen	Miss Allison Schloss	Mr. and Mrs. Alden Sulger		John Gallagher	Mrs. Elaine A. Crawford	Ms. Jessica Fricke	Mr. Robert A. Habermann	Mr. Thomas M. Hathaway	Ms. Denise A. Kelley
Thomas and Tatjana Parcella	Ms. Valerie Schrag	Mr. and Mrs. Robert N. Szalay		Mr. and Mrs. Robert K. Zentner	Dr. Catherine A. Clinton and Mr. Edward X. Clinton	Mr. and Ms. Carl T. Fulkerson	Tyler and Megan Hague	Mrs. Linda S. Hauser	Mr. and Mrs. Sean Kelly
Carrie and Matt Parr and Family	Mr. and Mrs. Paul W. Schroeder	Mr. and Mrs. Robert N. Szalay		Mr. and Mrs. Robert K. Zentner	Ms. Mary L. Coclanes	Dr. Cissy Furusho and Mr. Greg Furusho	Mr. and Mx. Kevin Hamilton	Ms. Margie Heffernan and Ms. Dawn Healy	Mr. and Ms. George W. Kennedy
Jim and Jean Parsell		Mr. and Mrs. Robert N. Szalay		Mr. and Mrs. Robert K. Zentner	Mrs. Carole S. Cohen	Mr. and Mrs. Daniel L. Galante	Mrs. Leslie Green	Mr. Michael Hervitz	Mr. and Mrs. Ian P. Kernan
Jyoti Patel and Rajeev Garapati		Mr. and Mrs. Robert N. Szalay		Mr. and Mrs. Robert K. Zentner	Mr. and Mrs. Stephen Colelli	Mr. Peter Gallagher	Mx. and Mrs. Timothy Greening	Mr. and Mrs. Harlow N. Higinbotham	Dr. and Mrs. Lawrence H. Kessler
Mr. and Mrs. William Pearce		Mr. and Mrs. Robert N. Szalay		Mr. and Mrs. Robert K. Zentner	Mr. and Mrs. Richard Fanslow		Ms. Lyndal J. Hanna		Ms. Lisa Key and Ms. Peggy Lint
Barbara and Jerry Pearlman		Mr. and Mrs. Robert N. Szalay		Mr. and Mrs. Robert K. Zentner	Ms. Sarah Finch		Mr. and Mrs. Michael T. Hannafan		
Mr. Gregory Pelnar		Mr. and Mrs. Robert N. Szalay		Mr. and Mrs. Robert K. Zentner	Mr. and Mrs. Kevin J. Connolly		Ms. Wendy Gross and Mr. William DeWoskin		
Ms. Kristy Pennock		Mr. and Mrs. Robert N. Szalay		Mr. and Mrs. Robert K. Zentner	Miss Linda Flores		Mrs. Patricia Guerra		
Mr. and Mrs. Michael S. Perlman		Mr. and Mrs. Robert N. Szalay		Mr. and Mrs. Robert K. Zentner	Mr. and Mrs. Edward C. Coughlin		Mrs. Ellyn Gullo		
Becky and David Perry		Mr. and Mrs. Robert N. Szalay		Mr. and Mrs. Robert K. Zentner	Mr. and Mrs. Don Cowan		Ms. Mary Guzan		

Mr. Patrick Lynch and Ms. Catrina Mayer Janet MacDougall Ms. Jolie R. Macier and Mr. James H. Niehoff Ms. Nancy MacKimm Dr. Shannon MacLaughlan David and Dr. Sean David Lynn and Eva Maddox Mr. Timothy Madel Mr. and Mrs. Michael S. Magnuson Mr. Peter Manhard Mr. and Mrs. Christopher Manning Mr. Scott Manning Drs. William S. and Constance D. Markey Mrs. Elizabeth Masley Mr. and Mrs. Daniel L. Matlin Mrs. Christine A. Matsunaga and Ms. Anna Salmon Mr. and Mrs. Matt Matthews Mr. and Mrs. Timothy McCarthy Dr. Stacie D. McClane and Mr. Jerry Mickelson Mara McDermott Mr. Michael McIntyre and Ms. Kimberly Gentleman Mr. and Ms. Charlie McMahon The McMillan Family Carrie McNally and Rick Maechling Mr. Sean P. McNeely Colleen and John McNicholas Linda Meisel Ms. Diane J. Mergen Ms. Joanne Meulendyke and Mr. Michael Baer Tom and Cathy Meyers Mr. Mike Mihalov and Ms. Jackie Sieros Mr. and Mrs. Mark Mirro J. W. Mitchell Ms. Suzanne Moltzen Mr. and Mrs. Chris A. Monley Mr. and Mrs. Ian Moodie Mr. Brian Moore Mrs. Lauren Moore Mrs. Samantha Morales Mr. Terry Moran Mr. Todd Morning	Mr. and Mrs. William Morrissey Gary Alan Muhr Stephanie Munger Ms. Regan Murphy and Mr. Shihwan Chung Mr. and Mrs. James W. Myers Ms. Jessica Myslinski Ms. Ellen J. Neely and Mr. Jeffrey S. Arnold Wayne E. Nelson Dr. Christopher Newman Mrs. Susan Nutson Ms. Therese Obringer Mr. David O'Connor and Ms. Caroline West Mr. and Mrs. Paul D. O'Connor Mr. and Mrs. Casey O'Halleran Mr. Morris Oldham Erika Olson and Dustin Weinberger Mr. and Mrs. Mark Olson Mr. and Mrs. Matthew Ostercamp Mr. Patrick D. Owens Mr. and Mrs. Justin Palmer Ms. Maria Pandolfo and Mr. Stan Siuta Mr. and Mrs. Matthew Paprocki Ms. Doris J. Patitz Mr. and Mrs. John T. Patterson Mr. and Mrs. Mitchell Pawlan Mr. Elliot Pearlman Mr. and Mrs. Michael Peck Mr. Clifford A. Pedersen Mr. Gary Pedulla and Ms. Marina Birch Mr. Marc A. Pelath and Mrs. Diana Pelath Mrs. Jennifer Pescatore John and Chris Pfeiffer Dr. Trang Pham-Smith Mrs. Abigail Phelps Ms. Cynthia Phillips Mr. and Mrs. Tom Pool Mrs. Lois Popish Mr. and Mrs. Amol Potdar Mr. and Mrs. Michael Poulos Mrs. Paula Powell Ms. Allison Price Mr. James Pruyn Dr. Catherine Putonti Ms. Maria Quiroz	Helene and Norman X. Raidl Joe and Marie Rakoczy Ms. Kristin Rakowski Dr. Taffy Raphael and Dr. James Gavelek Mr. Andrew Ray and Mrs. Sara Buchen-Ray Miss Mary L. Reed Mr. Zachary Reed Mr. Matt Reinhard Mr. Hayden Rendos Ms. Sarah Reynolds Mr. David A. Richards Miss Kaila C. Richardson Mr. and Mrs. Robert E. Rickett II Dr. Edward O. Riley Mr. William Ritchie and Mrs. Irem Metin Carole and Bonifacio Rivera Ms. Ann E. Rocchi and Ms. Sarah Rocchi Dr. Christine Roloff Ms. Melissa Root Dr. Linda Rosenthal Mrs. Princess Betsy Ross Ms. Danielle Russell Mr. and Mrs. Jonathan Russell Ms. Janet E. Rustigan Mr. and Mrs. Tomas Sabaduquia Mrs. Tracy Sagastume Mr. and Mrs. Mitchell Sager Mr. and Mrs. Jeffrey J. Saxton Mrs. Lisa and Mr. Sean Scanlon Julie Schaul Meg Schaul and Steve Stormo Mr. and Mrs. Philip Schmidt Sarah Schrup and Barry Matchett Ms. Jude Schubert Mr. and Mrs. Fritz W. Schumann Mr. and Mrs. Adam Schwartz Mr. Kenneth R. Seeskin and Ms. Bronna Wasserman Mr. and Mrs. Scott P. Serota Judith and John Shear Mrs. Duward F. Shriver Mr. Marc Silverstein Ilene Simmons Jane Simon Mr. John Sirek and Ms. Colleen Loughlin Ms. Frances L. Sisul	Mr. and Mrs. Robert Skarbek Mr. and Mrs. Charles B. Sklarsky Ms. Cheryl Skoglund and Ms. Crystal Marquez Ms. Eva M. Skowronski Ms. Cynthia Sloan Ms. Chaz Smith Mr. David Smith Mr. and Mrs. Eric Smith Ms. Johanna Smith Mr. and Mrs. John Q. Smith Martin and Donna Smith Mrs. Molly Smith Mr. and Mrs. Marc Smoler Darren and Anne Snyder Ms. Sabine Sobek Mr. and Mrs. Aaron Sofian Mrs. Irene Sofil Ms. Sangeetha Somayajula and Mr. Natarajan Pradeep Mr. and Mrs. John Sondgeroth Mr. Tom Sonneleitner and Dr. Supriya Mehta Mr. Jonathan G. Speigel Mrs. Dee Spence Ms. Amanda Spratt Annessa M. Staab Dr. Vanessa Stan and Mr. David Fenko Ms. Mary Stanhope Ms. Samantha Steele Mr. Scott Stefanik Carol D. Stein and James Sterling Dr. Neil Stern Mr. Justin Strane Ms. Maren Stuart Mr. Paul Sularz Mr. and Mrs. James Suprenant Mr. Wayne Svoboda Scott and Rhonda Swanson Mr. Grant C. Swisher Ms. Mary A. Taft Ms. Kathleen A. Taira Mr. and Ms. Stephen Talmadge Ms. Fui Lian Tan Ms. Kimberly K. Taylor Leslie and Mike Taylor Dr. Rosemary Z. Tegano and Mr. Joseph Zochowski Mr. John and Dr. Erin Telford Mr. and Mrs. Timothy Tews	Mr. and Mrs. Allan Thompson Mr. and Mrs. Jerome E. Tiesch Mr. Patrick Tobin Mr. and Mrs. Felix Tollinche Mr. and Ms. Johnnie Tom Mr. and Mrs. Michael Travelini Adam Tumas, Jr. Mr. and Mrs. Fred Tuytens Ms. Alice S. Valaitis and Mr. Joseph Ritter Ms. Eunice Valdivia and Mr. Barry F. Preston Mr. Salvatore Valenzisi and Ms. Sarah Meggan Friedman Mr. and Mrs. Alex Vanderkaay Ms. Robin M. Vogel Mr. and Mrs. Shawn Vogen Belle Waldfogel Mr. and Mrs. Brian Walker Mrs. Tamara Walker Garry and Carol Walters Mr. and Mrs. William Walters Ms. Regina Ward Mr. Paul Waters and Mrs. Nancy Bugajski Mr. Andrew Weissman Mr. and Mrs. Ken Wells Mr. Jason Wendt Mr. and Mrs. Aaron Werner Dr. and Mrs. Frank Weschler Ms. Lucille White Mr. and Mrs. Peter S. Willmott Dr. Daniel Winship and Mrs. Jean A. Schmidt Winship Dr. and Mrs. Hans Wolff Mr. and Mrs. Thaddeus Wong Mr. and Mrs. Mark Wood Mr. Kevin Woolf Mrs. Kelly Wyatt Ms. Elizabeth G. Wylie Anthony, Andrew, Lisa and Ted Yaghmour Ms. Stephanie Yanaga Douglas and Elizabeth Yerkes Ms. Leslie B. York Mrs. Melinda Yost Marshall Ms. Janice Young Ms. Caryl Zaar Mr. and Mrs. Daniel Zagorin Mary L. Zeltmann	Ms. Xiaoying Zhang and Mr. Ray G. Young Ms. Elizabeth Ziegler Mr. Steve Zutovsky and Mrs. Maureen Sweeney Mr. and Mrs. David Zwick				
CORPORATE, FOUNDATION, AND GOVERNMENT CONTRIBUTORS					We recognize corporate, foundation, and government partners who support the zoo's operations and special projects.				
\$1,000,000 and above					Institute of Museum and Library Services Pritzker Foundation				
\$500,000 to \$999,999					Arcus Foundation Association of Zoos & Aquariums Illinois Department of Natural Resources The John D. and Catherine T. MacArthur Foundation				
\$100,000 to \$499,999					ComEd, An Exelon Company The Glasser and Rosenthal Family Foundation Invesco Ltd. National Science Foundation				
\$50,000 to \$99,999					Allionce Group Helen Brach Foundation The Brinson Foundation Cornell University Great Lakes Coca-Cola Distribution, LLC Leo S. Guthman Fund, Patricia G. Silver, Lynne Rosenthal Indianapolis Zoological Society Chauncey and Marion D. McCormick Family Foundation Peoples Gas				
\$25,000 to \$49,999					Bowman C. Lingle Trust The Buchanan Family Foundation The Crown Family The D & R Charitable Foundation Dr. Scholl Foundation Julius N. Frankel Foundation EventPermits LLC John R. Halligan Charitable Fund JPMorgan Chase Foundation Louis Glunz Beer, Inc. Mazza Foundation Reid Park Zoo Daniel F. and Ada L. Rice Foundation Unaka Foundation, Inc.				
\$5,000 to \$9,999					Birmingham Zoo Patrick and Anna M. Cudahy Fund Dallas Zoo Irish Woods Foundation Mr. and Mrs. Robert B. Hoellen Naples Zoo NorthShore University HealthSystem Medical Group Pepper Construction Company Plante Moran Recess Digital Inc. Rhode Island Zoological Society Sargent Family Foundation Charles and M.R. Shapiro Foundation, Inc. Zoo Atlanta				
\$1,000 to \$4,999					Amstед Industries Foundation Audubon, Champaign Chapter Harry F. Chaddick and Elaine Chaddick Foundation, Inc. Global Conservation Network J & J Snack Foods Corporation The Morton Arboretum Old Republic International Corporation Shure Incorporated Walter and Caroline Sueske Charitable Trust Sunshine Charitable Foundation				
CORPORATE AND FOUNDATION MATCHING GIFTS					AbbVie, Inc. Allianz Life Insurance Company of North America Allstate Insurance Company American Family Insurance Dreams Foundation American International Group, Inc. Arcesium LLC Bank of America BDT Capital Partners Best Buy The Boeing Company CDW Corporation CNA Insurance Companies				
\$5,000,000 to \$9,999,999					ConAgra Duke Energy Foundation Equifax Exelon Foundation Fortress Investment Group LLC GE Foundation Goldman, Sachs & Co. Henry Crown and Company Illinois Tool Works International Business Machines Johnson & Johnson Foundation JPMorgan Chase Foundation The KIND Foundation Kirkland & Ellis LLP Leo Burnett Company, Inc. Linde The John D. and Catherine T. MacArthur Foundation Mondelez International Foundation Neiman Marcus Oracle Corporation Orix Foundation Peoples Gas PepsiCo Chicago Polk Bros. Foundation QBE Insurance Salesforce.com, Inc. Starcom Mediavest Group Tempus Labs U.S. Cellular Corporation USG Foundation, Inc. Verizon Foundation Wellington Management Company LLP West Monroe Partners LLC Westrock Foundation William Blair & Company, LLC				
\$1,000,000 to \$4,999,999					Anonymous (2) Mr. and Mrs. Lester Crown Mr. and Mrs. William L. Davis Francesca and John Edwardson Ann and Doug Grissom Leo S. Guthman Fund, Patricia G. Silver, Lynne Rosenthal Charles C. Haffner III Family John and Judy Keller Kovler Family Foundation Lionel Trains, Inc. Anna and Bob Livingston Malott Family Foundation The Abra Prentice Foundation Robert and Mayari Pritzker Family Foundation The Searle Funds at Chicago Community Trust Segal Family Foundation Abra Prentice Wilkin Foundation				
\$500,000 to \$999,999					William C. Bartholomay John R. Ettelson Katie and Brent Gledhill Mazza Foundation Joann and Stuart Nathan Public Museum Capital Grants Program, Department of Natural Resources Illinois State Museum Mrs. William S. Searle*				
\$10,000,000 and above					Caerus Foundation, Inc. Mr.* and Mrs. Richard S. Pepper Walter Family Foundation, Inc.				
\$5,000,000 to \$9,999,999					Emily and John Alexander The Davee Foundation Pritzker Foundation Lieutenant Colonel Jennifer N. Pritzker U.S. Army (Retired) The Regenstein Foundation TAWANI Foundation Women's Board of Lincoln Park Zoo				

Mr. and Mrs. James W. Buik Michele Chaffee and Adan Nordin Stephanie and John Harris Hickman Family Foundation Jamee and Michael Kane Sharon Karsten and Frank Malone Estate of Deanna Mannix Mitzenmacher Roscoe Company Ms. Marion S. Searle Susan and David Sherman Carrie and Jay Weaver	Mr. and Mrs. Thomas S. Alexander Geoffrey A. Anderson Mr. and Mrs. R. Jeff Bruce Joseph Doherty and Gretchen Hoffmann Tom and Karen Eisenbart in honor of Ann Stachowicz Les Fisher* William P. Fotis Abby and Don* Funk John and Denise Ginascol Jackie and Mitchell Harris Leland Hutchinson and Jean Perkins Bernice E. and Norman A. Koglin Mark. A. and Terry A. Levy Mr. and Mrs. Matt McKee Mr. and Mrs. Peter McKee Elizabeth and Constantine Mihas Nancie Mishlove Roberta Olshansky* Carol Overman Mr. and Mrs. Kenneth Piller Carolann Randall Susan Regenstein and Barry Frank Carol D. Stein and James S. Sterling Linda J. Swanson Paula Turner Ellen and Jerry Upton Linda and Michael Welsh Peggy and Brian White The Penny A. Wilson Fund	Elisabeth C. Meeker Jeffrey Mono and Steve Greenberg Brad and Susan Oltmanns Ms. D. Elizabeth Price and Mr. Lou Yecies Kelly and Brad Rainko Ms. Linda E. Salisbury Shannon Schuyler and Steve Beard Elizabeth B. Searle and Family Kim and Steve Theiss Ms. Christine M. Tierney and Mr. Jeffery P. Jor dt Mr. Kenneth Traisman Mrs. H. Blair White Dr. Joan E. and Dr. Russ Zajtchuk	Karen and Neil Kawashima Mr. and Mrs. William Kies Ms. Linda J. Leadbitter and Mr. Chuin Kuo Mr. and Mrs. John W. Leese Francine R. Manilow Mr. and Dr. Roland Martel The Sutherlin Martin Family Mrs. Judith A. Mills-Cerny Charlotte and Jim Monhart David and Charmaine Nichols C. R. Norin Ms. Nina Owen and Mr. Micahel D. Belsley Mr. and Mrs. William Pearce Cynthia and David Polayes Dr. and Mrs. William Porter Mr. Richard Poulton Robert and Liz Richardson Kirsten and Harold Rider Kathleen and Stephen Scallan Bessie Shields Foundation Mr. Karl Stanley Trudy and Jim Westerman Sharon Zackfia	Judi Findorff Ms. Anne E. Fogarty Sue Fogarty Kate Fridholm William and Lynda Gardner Barbara J. Geist Sue and Melvin Gray Mr. and Mrs. Dennis C. Gross Barb and Glenn Grossklags Ted Haffner Drs. Lisa Halliday and Robert Liebman Patricia Haneline Robert J. Horton and James C. Perry Mr. Michael E. Hughes and Ms. Sandra Notardonato Ms. P.D. Israel Rosemary and Gary Jones Mr. Thomas M. Jones and Ms. Wendy Schiller Ms. Kelly Keil and Mr. Brandon Ewing Marci Klein Dr. Kristen Knutson Lottie and Monica Kowalski Karen Lauer Mr. and Mrs. Terrence LeFevour Mr. and Mrs. Richard H. Lenny Mr. and Mrs. Gregory Leos Suzanne and Joseph Lysy Mohammed Areeb Abdul Mokeet Christine and Thomas Moldauer Lynne Considine Nieman Mrs. June Maguire Ozmon Karla D. Petersen Dianne Goren Radtke and Steven Radtke Kathy and Dave Riddell Ms. Anita J. Rogers Mr. Michael Rosenbaum Megan R. Ross, Ph.D. and Stephen Ross, Ph.D* Dr. and Mrs. Sheldon B. Rubin Myra and John Reilly S.B. Family Foundation Ronald and Joanne Schlacks Todd and Kelli Schrade Nancy Schroeder and Larry Elbert Mr. and Mrs. Barre Seid Sue Ann Selle	Mr. and Mrs. John F. Siff Patrick Stack and Geeta Kharkar Stack Paul A. Svoboda Dr. Edward Tenner Mrs. Brenda Tran-Keating and Mr. Terry Keating Mrs. Susan K. Wilson Barb and Steve Wolf Len and Pat Zolna Christine Zrinsky	Elizabeth Gillette and David Lively Mr. and Mrs. Frederick W. Glure Michael Goldberger Ms. Joan Goldstein Carol Gonsky Gale and Jay Gottlieb Mr. and Mrs. Michael Greenberg Trudy and Dennis Gross Hollis and Mark Hanover Ms. Kimberly Hendricks Ms. Lina Hilko and Ms. Kotryna Hilko Janice L. Honigberg Mr. George M. Houhanisin and Ms. Sarah Johnson Victoria and John G. Howland Maria R. Hrycelak, M.D. Mr. and Mrs. Lewis S. Ingall Mr. and Mrs. Joseph Jacobazzi Mrs. Ruth A. Jennings Mr. Raymond Jess Thor and Darlene Jondahl Mr. Scott Jones and Dr. Jennifer Pope Ms. Marcia S. Kaminsky Chris Karalis Ms. Julie Katz Mr. and Mrs. Thomas P. Kearney Heidi and Ed Keenan Rebecca M. Coleman Mrs. Frank Considine Anjana Dalal and Dirk Mueller-Ingrand Dr. Anita Damodaran Mark Dromboski Deanna Dunagan Mr. and Mrs. Richard Duran Mr. and Mrs. Thomas C. Eley III Susan and Bryan Erler Mr. and Mrs. William F. Farley Mr. and Mrs. Chad M. Feingold Honor and Gene Ferretti Mr. and Mrs. Alex Fisher Mr. and Mrs. John Fitzpatrick Mrs. James M. Flanagan Mr. Edward A. Fortino and Ms. Dayle Duchossois-Fortino Enid G. Gardner Susan Geisenheimer	Dr. and Mrs. Stephen J. Mendak, Jr. Lenore Micatka Mr. and Mrs. Charles Michod Brittany, Adam, and Max Miller David Miller Mr. Thomas Miller Mr. Thomas E. Mulvihill Mr. Brian J. O'Connor and Ms. Susan L. Knaack Cahir O'Doherty Ms. Gina Oka and Mr. Lawrence Lai Barbara Peele's Family Ms. Jacqueline Parks Ms. Margaret A. Peran Allyson Pooley Emmelie and Cameron Reilly Mr. Tomm E. Renk Kim Rice Mr. John W. Rogers, Jr. R. Timothy and Susan K. Rooney Sarah Rutledge Karen and Frank Schneider Todd and Stephanie Schnick Foundation K. M. Schramm Mr. and Mrs. Thomas Secco The Severinghaus Family Mrs. Roberta Sharp and Ms. Suzanne Sharp Gilda and Alberto Silva Adele and John Simmons Mr. and Mrs. Arthur Simon Sue and Bill Smilie St. Mary's Junior National Honor Society Robert and Mary Stanek Robert and Nancy Stanek Jennifer L. Statler Mr. Richard A. Stefan Dr. Michael D. Streicher Mr. Kenneth J. Superczynski Drs. Jake and Cyndi Tabel Ms. Mary A. Taft Jonathan Talbert Dana Shepard Treister and Dr. Michael Roy Treister Chris Tompsett Kate Turkcan	Mr. Mark Tyle and Mr. James Damato Ms. Anne Van Wart and Mr. Michael Keable Ms. Lydia E. Wahlke and Mr. Andrew M. Johnstone Ms. Elizabeth Foster and Mr. Michael Walsh Dr. and Mrs. Peter Weiden The Welzer and Greisch Family Thomas M. and Linda D. White	Nancy A. Trainer Mr. and Mrs. Robert K. Zentner
<div> <div>\$100,000 to \$249,999</div> <div> <div>Anonymous (2)</div> <div>Mary and Nick Babson</div> <div>Charles A. Barone and</div> <div>Susan A. Keiffer</div> <div>Diane and Michael Beemer</div> <div>Tracey and Ed Benford</div> <div>The Boler Family Foundation</div> <div>Bulley & Andrews</div> <div>Mr. and Mrs. John A. Canning, Jr.</div> <div>Mr. Michael Collins and</div> <div>Ms. Joanna Dutta</div> <div>Richard and Margery Feitler</div> <div>Marshall Field V</div> <div>Susan F. Flynn</div> <div>Mr. and Mrs. Charles K. Huebner</div> <div>Carol and Larry Levy</div> <div>Jean McBride Greene Family</div> <div>Mrs. Kathleen Mazzi*</div> <div>The Howard and Kennon McKee</div> <div>Charitable Fund</div> <div>Elizabeth and Constantine Mihas</div> <div>Mr. John Mostofi</div> <div>Nordloh Family</div> <div>The Northern Trust Company</div> <div>Greg and Mary O'Brien</div> <div>Pearlman</div> <div>Norman and Edith Riley</div> <div>Nydia and Michael Searle and</div> <div>Family</div> <div>Rose L. Shure*</div> </div> </div>									
<div> <div>\$50,000 to \$99,999</div> <div> <div>Anonymous</div> <div>Mr. Duncan Alexander and</div> <div>Ms. Katharine A. Keane</div> <div>Mrs. Karen B. Alexander</div> </div> </div>									
<div> <div>\$25,000 to \$49,999</div> <div> <div>Anonymous</div> <div>Mr. and Mrs. Buck Betten</div> <div>Terrance J. Bruggeman</div> <div>The Elbert Family</div> <div>Monique and Stanley Friedman</div> <div>William and Barbara Higgins</div> <div>John M. Holmes and</div> <div>Jenni Sorenson</div> <div>Rose M. Houston</div> <div>Mr. and Mrs. James C. Johnson</div> <div>Knowles Foundation</div> <div>Barbara Lancotot</div> <div>Mrs. Grace Leffel*</div> <div>Mrs. Nancy A. McDaniel</div> </div> </div>									
<div> <div>\$10,000 to \$24,999</div> <div> <div>Anonymous (2)</div> <div>Richard and Janice Bail</div> <div>Katherine and Kirk Baldwin</div> <div>Mr. Peter Barrett and</div> <div>Mrs. Betsy Barrett</div> <div>Mr. Kevin J. Bell</div> <div>Mr. and Mrs. Mihir Bhayani</div> <div>Mr. and Mrs. Robert Calloway</div> <div>Richard and Ann Carr</div> <div>Ms. Marsha A. Cruzan and</div> <div>Mr. Thomas C. McGinnis</div> <div>Mr. and Mrs. Bill Cummings</div> <div>Laura and Dave Davis</div> <div>Mr. and Mrs. Jeffrey Diehl</div> <div>The Ebbott Family</div> <div>Don and Anne Edwards</div> <div>Polly and William Eldringhoff</div> <div>Mrs. Jerome L. Ettelson</div> <div>Ann and Tarek Fadel</div> <div>Christine Fisher</div> <div>Lisa Genesen and David Tabolt</div> <div>Lionel and Mary Go</div> <div>Joyce E. Heidemann</div> <div>Mr. and Mrs. Harlow N.</div> <div>Higinbotham</div> <div>Mellody Hobson and</div> <div>George Lucas</div> <div>Bill and Vicki Hood</div> <div>Mrs. Elizabeth Howard</div> <div>Mr. Thomas Hulseman and</div> <div>Mr. Esteban Diaz</div> <div>Jones Foundation</div> </div> </div>									
<div> <div>\$5,000 to \$9,999</div> <div> <div>Anonymous</div> <div>Christine Albright and</div> <div>Lawrence Gill</div> <div>Brett and Lindsay Archie</div> <div>Mrs. Jennifer J. Arquilla Bocik</div> <div>Johny Beaugez</div> <div>Ms. Reggie Beckman and</div> <div>Dr. Timothy N. Merrill</div> <div>Mr. Michael W. Bransfield and</div> <div>Ms. Alison W. Bransfield</div> <div>Edward J. Calkins</div> <div>Ms. Dona Robbins Cohen an</div> <div>Mr. Howard Cohen</div> <div>Mrs. Adrian W. Collins</div> <div>Nancy Raymond Corral Family</div> <div>Lawrence O. Corry</div> <div>Ms. Angela D'Aversa</div> <div>Davis Family</div> <div>Dr. Susan Dennis and</div> <div>Mr. Jim Murray</div> <div>Mr. and Mrs. Frank DiJohn</div> <div>Ms. Laurie Dombrowski</div> <div>Ms. Elaine M. Duffens</div> <div>Mr. and Mrs. Larry K. Ebert</div> <div>Nanci Endliss</div> </div> </div>									
<div> <div>\$2,000 to \$4,999</div> <div> <div>Anonymous (3)</div> <div>Ms. Jennifer Avery-Emani and</div> <div>Mr. Niranjan Emani</div> <div>Mr. Richard Babcock</div> <div>Mr. and Mrs. Charles Ball</div> <div>Kristin Baranack and</div> <div>David Tutrone</div> <div>Kate and Tara Barnash</div> <div>Mrs. Carrie Bender</div> <div>Ms. Nancy J. Bennett</div> <div>Mr. and Mrs. Brian Bentley</div> <div>Ms. Wendy C. Binder and</div> <div>Mr. James R. Richardson</div> <div>Mr. Jeffrey Brand</div> <div>Brenda L. Campbell</div> <div>Deb and Art Clamage</div> <div>Krista and Erick Coan</div> <div>Rebecca M. Coleman</div> <div>Mrs. Frank Considine</div> <div>Anjana Dalal and</div> <div>Dirk Mueller-Ingrand</div> <div>Dr. Anita Damodaran</div> <div>Mark Dromboski</div> <div>Deanna Dunagan</div> <div>Mr. and Mrs. Richard Duran</div> <div>Mr. and Mrs. Thomas C. Eley III</div> <div>Susan and Bryan Erler</div> <div>Mr. and Mrs. William F. Farley</div> <div>Mr. and Mrs. Chad M. Feingold</div> <div>Honor and Gene Ferretti</div> <div>Mr. and Mrs. Alex Fisher</div> <div>Mr. and Mrs. John Fitzpatrick</div> <div>Mrs. James M. Flanagan</div> <div>Mr. Edward A. Fortino and</div> <div>Ms. Dayle Duchossois-Fortino</div> <div>Enid G. Gardner</div> <div>Susan Geisenheimer</div> </div> </div>									
<div> <div>\$1,000 to \$1,999</div> <div> <div>Anonymous</div> <div>Mr. Will Alter</div> <div>Mr. and Mrs. Eric D. Becker</div> <div>Mr. Howard B. Bernick</div> <div>Mr. and Mrs. Thomas Bridges</div> <div>Mr. and Mrs. Matthew Campbell</div> <div>Alice Cooperman</div> <div>Margaret and Patrick Croke</div> <div>Craig and Janet Duchossois</div> <div>Ms. Kim Duchossois</div> <div>Patty and Russ Eggert</div> <div>Angela and Geoffrey Euston</div> <div>Mr. and Mrs. John Fitzpatrick</div> <div>Mr. Arthur P. Frigo, Sr. and</div> <div>Ms. Monica Von Glahn</div> <div>Jon & Mindy Gray Family</div> <div>Foundation</div> <div>Ms. Marlene M. Hinsch</div> <div>Bonnie and Michael Kaufman</div> <div>Mr. and Mrs. Jim Klutznick</div> <div>Mr. and Mrs. Jonathan Lewis</div> <div>Mr. and Mrs. Jeff Malec</div> <div>McKee Family</div> <div>Mr. and Mrs. Andrew McNally IV</div> <div>Mary Claire and Ken Moll</div> <div>Bev Moody</div> <div>Mr. and Mrs. Jon Najarian</div> <div>Mr. and Mrs. David Olshansky</div> <div>Mr. and Ms. Brent Peebles</div> <div>Ms. Karen Peterson Schutz and</div> <div>Mr. Ronald M. Schutz</div> <div>Mr. and Mrs. Gary L. Prior</div> <div>Jill D. Rein</div> <div>Mr. and Mrs. David Sandor</div> <div>Marty Peterson and Andy Shaw</div> <div>Howard and Juanita Spanogle</div> <div>Mr. and Mrs. Nathan B. Swift</div> <div>Mr. David W. Tate</div> <div>Jessica and Laurent Therivel</div> </div> </div>									
<div> <div>ENDOWMENTS</div> <div> <div>John Caldwell Meeker</div> <div>Conservation Endowment Fund</div> <div>Elisabeth C. Meeker</div> <div>Mrs. Withrow Meeker</div> <div>Ms. Dabney M. Rohrbach</div> <div>Mrs. Ann Meeker Ryan and</div> <div>Mr. Steven M. Ryan</div> </div> </div>									
<div> <div>ZOO PROGRAMS</div> <div> <div>We recognize individuals</div> <div>directing gifts to zoo programs.</div> </div> </div>									
<div> <div>\$1,000,000 or above</div> <div> <div>J. Thomas Hurvis and</div> <div>Ann Andersen</div> <div>Abra Prentice Wilkin</div> <div>Foundation</div> </div> </div>									
<div> <div>\$500,000 to \$999,999</div> <div> <div>Peoples Gas and</div> <div>North Shore Gas</div> </div> </div>									
<div> <div>\$100,000 to \$499,999</div> <div> <div>Emily and John Alexander</div> <div>John Hart and Carol Prins</div> </div> </div>									
<div> <div>\$25,000 to \$99,999</div> <div> <div>Mary and Bruce Feay</div> <div>Nancy A. McDaniel</div> <div>Shure Charitable Trust</div> </div> </div>									
<div> <div>\$10,000 to \$24,999</div> <div> <div>Anonymous</div> <div>Sue and Jim Colletti</div> <div>Marilyn D. Ezri, M.D.</div> <div>Mr. and Mrs. Camillo A. Ghiron</div> <div>Mr. Roger G. Hill and</div> <div>Mrs. Eva Wassermann</div> <div>Dr. June K. Robinson and</div> <div>Mr. William T. Barker</div> <div>Ms. Beverly J. Rodgers</div> </div> </div>									

\$5,000 to \$9,999
Mr. and Mrs. Thomas E. Donnelley II
Ms. Janice Wendland

\$2,000 to \$4,999
Anonymous
Roberta Karper
Miss Virginia Robbins
Ms. Roberta Schaffner

\$1,000 to \$1,999
Shaun and Andy Block
Trish and Harp Harper
Mr. Benjamin Hellweg and Mrs. Jennifer Kim
Judy and John Keller
Carol and Larry Levy
Sandy and Jerry Manne
Dr. Terry L. Maple

WOMEN’S BOARD 2021
EVENTS SUPPORTERS

\$25,000 to \$49,999
Anonymous
Abbott Laboratories
Emily and John Alexander
BMO Harris Bank
Edwardson Family Foundation
Holly and Peter Geraci
Katie and Brent Gledhill
Mr. John Mostofi
PNC Financial Services Group
Mr. and Mrs. Patrick G. Ryan
Tawani Foundation

\$10,000 to \$24,999
AAR Corporation
Accenture
Mr. Hubert L. Allen and Mr. Hau Chyi
Ameresco
Aon Corporation
Baker Tilly Virchow Krause, LLP
David P. Bolger
Colleen and Biff Bowman
Mr. and Mrs. Thomas Bridges
C&W Facility Services Inc.
CAF America
Citadel Enterprise Americas LLC

Mr. and Mrs. Bruce A. Crown
Edwardson Family Foundation
Dr. Karen S. Eisenbart and Mr. Thomas R. Eisenbart
Angela and Geoffrey Euston
Ann and Tarek Fadel
Richard and Margery Feitler
John and Geraldine Fiedler
Fifth Third Bank
Melissa and Adam Filkin
Mr. and Mrs. Christos Giannoulas
Meg and Matthew Gilbert
Denise and John Ginascol
Goldman, Sachs & Co.
Grant Thornton LLP
Green Door Capital Investments, LLC
Caroline and Charlie Huebner
J. Thomas Hurvis and Ann Andersen
J.P. Morgan Charitable Giving Fund
Jones Lang LaSalle, Americas Inc.
Ms. Marcia S. Kaminsky
Barbara and Keith Kizziah
KPMG LLP
Drs. Mary and Scott MacGregor
Mr. Jason Miller
Mr. and Ms. Arthur Noah Minetz
Alyson and Pat Nash
Michele Chaffee and Adam Nordin
Peoples Gas and North Shore Gas
Dr. Mayari A. Pritzker
Mr. and Mrs. Robert E. Rainone
Smart Family Foundation, Inc.
Van and Beth Herrington Stamos
The Horton Group, Inc.
Mrs. John P. Tierney
Ms. Christine M. Tierney and Mr. Jeffery P. Jordt
U.S. Bank
U.S. Cellular Corporation
Mrs. Jacilyn Watts
Wintrust Financial

\$5,000 to \$9,999
Dr. Margaret Dickerson and Dr. Robert Fliegelman
Abby and Don* Funk
Jenner & Block
Mr. and Mrs. David J. Koo
Mr. and Mrs. Cameron McKinney
Michele Schara and Randy Mehrberg
Elizabeth and Constantine Mihas
Mr. and Mrs. Jon Najarian
Mr. and Mrs. Robert Pasquesi
Mr. and Mrs. William G. Peluchiwski
Ms. LeAnn Pope
Robert and Mayari Pritzker Family Foundation
Mr. Antonio Romanucci and Ms. Andrea Watson
Mrs. Barbara A. Speer
W.F. Foundation
Mr. and Mrs. Brian J. White
Abra Prentice Wilkin
William Blair & Company, LLC

\$2,500 to \$4,999
Mr. Michael Abt
Mr. and Mrs. William Barker
Mr. Margarita Chavez
Krista and Erick Coan
Anjana Dalal and Dirk Mueller-Ingrand
Mr. John R. Ettelson
Mr. and Mx. Kevin Hamilton
Ms. Marilyn Hanzal
Mr. Roger G. Hill and Mrs. Eva Wassermann
Lorraine and Jon Kaplan
Mr. and Mrs. Andy Kofoid
Mr. and Mrs. Dan Littmann
Rita and Louis Maltezos
Mr. and Mrs. Eric Mansell
Lee and Vicki Moore
Mr. and Mrs. Lou Morrone
Greg and Mary O'Brien Pearlman
Mr. Denis Pierce
Lynne and Ian Radomski
Kirsten and Harold Rider
Alice D. and Peter H. Schaff
Todd and Kelli Schrade

Chase and John Stevenson
Mr. and Mrs. Andrew Vail
Mr. and Mrs. Dan VanAken
Dr. Amy Williams and Mr. Jason Williams
Sharon Zackfia

\$1,000 to \$2,499
Mr. and Mrs. Ricky Abt
Mr. David Adams
Mr. and Mrs. Zach Archer
Mr. Thomas Aridas
Mr. and Mrs. Norman K. Beck
Mr. Kevin J. Bell
Mr. and Mrs. Ryan Bennett
Debbie and Bob Bridges
Mr. Tom Bridges
Mr. Jeffrey Brown and Mrs. Susan Fortino-Brown
Mr. and Mrs. Gregory C. Case
Mr. and Mrs. Douglas Chambers
Mr. and Mrs. Brett Chloupek
Mr. and Mrs. Paul Citardi
Deb and Art Clamage
CNA Insurance Companies
Margaret and Patrick Croke
Mr. and Mrs. Thomas J. Davis
Dr. Susan Dennis and Mr. Jim Murray
Mr. and Mrs. Scott Dias
Mr. and Mrs. Scott Dickes
Mr. and Mrs. Robert Doherty
Master Bobby Eber
Mr. and Mrs. Robert Eber
Polly and William Eldringhoff
Susan and Bryan Erler
Mr. Andrew J. Fay
Mr. and Mrs. Sean Garrett
Mr. and Mrs. Thomas Gates
Lisa Genesen and David Tabolt
Ms. Barbara Giardino
Mr. Patrick Goodwillie and Mrs. Ligia Mendez Goodwillie
Mr. Adam Haag
Mr. and Mrs. Brian Haggie
Mrs. Janet Halpin
Ms. Kyle L. Harvey
Mr. and Mrs. Sabir Hashmy
Henry Crown and Company
Mr. Dan Herzberg and Ms. Jennifer Pelino
Ms. Megan Hodes

Mr. Alan J. Hunken and Ms. Carol Hathaway
Indian River Community Foundation
Mr. and Mrs. Lewis S. Ingall
Mr. and Mrs. William Jackson
Mr. and Mrs. Alexander Jacobs
Rosemary and Gary Jones
Mr. and Mrs. John Joyce
Mr. and Mrs. Tom Kawalec
Mr. and Mrs. John F. Kennedy
Mr. and Mrs. Angelo Kritikos
Mr. and Mrs. William Krogstie
Mr. Jay Leonard and Mrs. Molly Lynch Leonard
Mr. and Mrs. Michael Leong
Mr. and Mrs. Jonathan Lewis
LinkedIn
Mr. and Mrs. Frederic Lissalde
Mr. and Mrs. Paul Loftus
Becky Marquardt
Mr. and Mrs. Peter McDonald
Carlette McMullan
Dr. Laura M. Melcher and Mr. Jan Blok
Charlotte and Jim Monhart
Ms. Molly Mulroy
Mr. and Mrs. Dean Nelson
Mr. and Mrs. Eric Nordness
Mr. David W. Ouyang and Ms. Kim Johnson
Mr. and Mrs. Joon Park
Carrie and Matt Parr and Family
Mr. and Mrs. Scot Pepper
Ms. Karen Peterson Schutz and Mr Ronald M. Schutz
Tom and Stephanie Posey
Mr. and Mrs. Matt Ray
Mr. and Mrs. Michael Richmond
Mr. and Mrs. William M. Ringhofer
Ms. Lupe Rivera
Mr. and Mrs. Michael C. Rothman
Mr. and Mrs. Matt Ryan
Mr. and Mrs. Thomas Sampson
Mr. and Mrs. Michael Sheppard
Ms. Laura Simsic
Mr. and Mrs. Thomas Spalding
Jennifer L. Statler
Mr. Mark Tatro
Mr. and Mrs. Dave Tentinger

Kim and Steve Theiss
Jessica and Laurent Therivel
Mrs. Brenda Tran-Keating and Mr. Terry Keating
Ms. and Mr. Katherine Veach
WEC Energy Group
Megan and Brad Weiland
Trudy and Jim Westerman
Mr. and Mrs. Doug Williams
Mr. and Mrs. Steven Young

AUXILIARY BOARD 2021
EVENTS SUPPORTERS

\$10,000 and above
Citadel Enterprise Americas LLC
Louis Glunz Beer, Inc.
NewCity
The Tuttleman Foundation
U.S. Bank

\$2,500 to \$4,999
The John Buck Company

\$1,000 to \$2,499
Ms. Jeanne B. Ettelson
West Monroe Partners LLC



ANNUAL REPORT FY 2022

SENIOR STAFF	ANNUAL REPORT STAFF
PRESIDENT AND CEO Megan Ross, Ph.D.	DIRECTOR OF PUBLIC RELATIONS AND COMMUNICATIONS Jillian Braun
CHIEF FINANCIAL OFFICER Rena Solano	DIRECTOR OF DESIGN Christopher Bijalba
VICE PRESIDENT, OPERATIONS Brendan Daley	ART DIRECTION Joann Raia
VICE PRESIDENT, GOVERNMENT RELATIONS AND EXTERNAL AFFAIRS Marybeth Johnson	EDITORIAL Jillian Braun Sabrina Cynova Beth Krauss Helen A. Lee
VICE PRESIDENT, MARKETING AND COMMUNICATIONS Beth Krauss	PRODUCTION Hyson Gibbon Newson
VICE PRESIDENT, HUMAN RESOURCES AND ADMINISTRATION Linda Leadbitter	PHOTO AND ILLUSTRATION CONTRIBUTORS Christopher Bijalba Monica Dalmasso Jill Dignan Tom Harris Christopher Meza Lisa Miller Mike Murray Steve Musgrave
VICE PRESIDENT, ANIMAL CARE AND HORTICULTURE Maureen Leahy	
VICE PRESIDENT, LEARNING AND COMMUNITY ENGAGEMENT Dana Murphy	
VICE PRESIDENT, CONSERVATION AND SCIENCE S. Sunny Nelson	

*Deceased