



# Annual Report '13

LINCOLN PARK ZOO





# New Faces, New Heights

What's new at Lincoln Park Zoo? Looking back at the amazing year behind us, I can say we had a different answer nearly every week, each one reflecting our commitment to defining excellence for zoos in the 21st century.

Most prominently, there were new faces among the species in our care. A new African lion, Sahar, now looks down from the famous perch at the Kovler Lion House. We welcomed a Grevy's zebra colt and two takin babies, arrivals who—in the spirit of our times—received their names from fans of the zoo through an online poll.

We embraced a novel twist on our groundbreaking work with gorillas, featuring the first all-male bachelor troop in the zoo's history. We welcomed two babies for this critically endangered species—females Patty and Nayembi. And we established a new standard for world-class care after Nayembi suffered an injury that required delicate surgery and months of around-the-clock nurturing.

Familiar faces filled exciting new roles in conservation and science, with Lisa Faust, Ph.D., stepping up as the department's new vice president and Steve Ross, Ph.D., becoming director of the Lester E. Fisher Center for the Study and Conservation of Apes. Increased responsibilities haven't stopped them from pushing boundaries with their own research, examining the sustainability of zoo populations and the intricacies of how chimpanzees learn and think.

Perhaps the biggest leap forward, though, was the February creation of the Hurvis Center for Learning Innovation and Collaboration. Led by Senior Director Leah Melber, Ph.D., and funded by a generous \$3 million gift from the Hurvis Charitable Foundation, the Hurvis Center will explore new approaches for science education.

By giving expert educators—and researchers—the freedom to explore, the Hurvis Center will find new ways to connect learners with the natural world. It will pair a local focus with a global reach, sharing discoveries with partners around the globe.

It's an exciting change in a year filled with them, all reflecting Lincoln Park Zoo's commitment to conservation, education and care. Thank you for your abiding support, a great constant that enables us to explore these uncharted frontiers...including new ones to come.



Kevin J. Bell  
President and CEO

John Alexander  
Chairman

---

*(Cover) The zoo's world-class care was seen in the quick response and around-the-clock nurturing that fueled the recovery of infant gorilla Nayembi. (This page) The year's new arrivals include African lion Sahar and baby gorillas Nayembi and Patty. (Opposite) The zoo-led Serengeti Health Initiative vaccinated its 1 millionth dog, a milestone in protecting the African region's people, pets and predators. Research Coordinator Anna Czupryna (vaccinating dog) hosted zoo experts and Chicago Tribune reporters in the field. Closer to home, ornate box turtles received a conservation head start at the zoo.*



# Conservation & Science

An accomplished year highlights familiar faces and world-class research.

Zoo conservation and science welcomed a new leader this year as Lisa Faust, Ph.D., was named the department's new vice president, a position overseeing nearly 50 scientists conducting work at the zoo and around the globe. Faust started her career as a zoo intern and was most recently director of the Alexander Center for Applied Population Biology. Her appointment followed a nationwide search, one that concluded the best candidate was already at the zoo.

Beyond supervising zoo research, Faust continued her own groundbreaking work. This year she unveiled the PMCTrack software tool, which lets Association of Zoos and Aquariums institutions track and evaluate the outcomes of recommendations to move or breed individual zoo animals. Faust and her team also created models to assess the long-term sustainability of zoo populations ranging from bears to big cats. Finally, she developed a framework for evaluating animal median life expectancies, enabling zoos across the country to speak authoritatively about the animals in our care.

Another familiar face assumed a new role as Steve Ross, Ph.D., was named director of the Lester E. Fisher Center for the Study and Conservation of Apes in June. Previously the center's assistant director, he's known for research into ape behavior and cognition as well as tireless efforts to improve chimpanzee well-being through projects like Lincoln Park Zoo's Project ChimpCARE.

A world away, zoo scientists celebrated a conservation milestone as the zoo-led Serengeti Health Initiative vaccinated its 1 millionth dog against rabies and distemper in April 2012. The long-running effort has checked the spread of disease to the Serengeti's people—and keystone predators like lions and African wild dogs. As a result, African wild dogs are once again living in the Serengeti ecosystem...and rabies cases have dropped to zero. This world-class conservation effort was the focus of a special three-part series in the Chicago Tribune, underscoring the zoo's impact in one of Africa's signature ecosystems.

Another African research site—the Republic of Congo's Goulougo Triangle—had exciting developments as well. In September, this untouched ecosystem received a conservation boost as the United Nations World Heritage Committee named 10,000 square miles of nearby forest a World Heritage Site.

In addition to the accomplishments abroad, conservation work in the zoo's backyard remains a focus. Scientists with the Urban Wildlife Institute expanded their Urban Wildlife Biodiversity Monitoring Project to include audio monitoring for the region's bats. Biologists continued to work with the Lake County Forest Preserve District to release smooth green snakes into the wild. Finally, the hatch of 18 ornate box turtles at the zoo marked a successful start to a partnership with the U.S. Fish and Wildlife Service to restore the threatened species to southern Illinois.

Lincoln Park Zoo researchers continued work to help the larger zoo community. Yvonne Nadler, D.V.M., and her partners at the University of Illinois at Urbana-Champaign and the U.S. Department of Agriculture developed a working group to prepare zoos for a potential outbreak of avian influenza. The Population Management Center collaborated with species managers across the country to produce breeding and transfer recommendations for 83 species, covering animals from snow leopards to lined seahorses.

Beyond these highlights, the entire department perpetuated its conservation and science leadership locally, regionally and globally. Their efforts included the publication of 31 scientific papers, 56 presentations at scientific conferences and the mentoring of 12 Ph.D./master's students and 40 undergraduate interns.

Lincoln Park Zoo graciously thanks the individuals, families and foundations who support these projects.”





# Animal Care

Change was a constant in a busy year of new arrivals, with the zoo's famous gorillas at the heart of the transition.

Long known for groundbreaking work with gorillas, Lincoln Park Zoo embarked on a new milestone in welcoming its first gorilla bachelor group. The all-male troop is composed of juveniles Amare, Azizi, Mosi and Umande. Amare and Azizi grew up at Regenstein Center for African Apes while Mosi and Umande came from Little Rock Zoo and Columbus Zoo. The lively group displays plenty of adolescent play.

In welcoming the bachelors, the zoo said goodbye to silverback JoJo and females Tabibu and Makari, who departed for Brookfield Zoo, Columbus Zoo and Kansas City Zoo. A farewell party was held, complete with messages from friends of the zoo and a massive ice cake.

The traditional gorilla family group led by silverback Kwan saw an influx of youthful energy as females Bana and Rollie gave birth in October and November 2012. The group welcomed two girls—Patty and Nayembi—although Nayembi moved behind the scenes in February to recover from an injury sustained on exhibit. Thanks to a quick response and expert care, she's healing well. Animal care staff hope to reintroduce her to her family in the year ahead.

The zoo welcomed new arrivals away from Regenstein Center for African Apes as well. A new male lion, Sahar, took the iconic spot at the head of the pride at the Kovler Lion House. A 3-year-old from the Bronx Zoo, Sahar continues to grow in the exhibit he shares with female Myra.

The Antelope & Zebra Area welcomed a zebra colt in August and two baby Sichuan takins in February. All three males were named with the help of fans of the zoo in online polls. The zebra was dubbed Kito, which means "jewel" in Swahili, and the two tiny takins were named Xing Fu and Mengyao, which mean "happy good for-

tune" and "superior handsomeness" in Mandarin.

The human side of Animal Care saw some new faces as well. In March, Sunny Nelson was named Hope B. McCormick Curator of Birds. She came to the zoo in 2010, first as lead keeper and then zoological manager of the area. Her expertise and enthusiasm make her a perfect fit to care for the flock and expand local conservation efforts.

Plenty of chicks peeked their heads out of zoo nests last year. The McCormick Bird House welcomed two clutches of Bali mynahs, significant arrivals for a species that's critically endangered in the wild. Other hatches included European white storks, fairy bluebirds, a sunbittern, a Blyth's hornbill, a green-naped pheasant pigeon, a Guam Micronesian kingfisher (extinct in the wild), crested wood partridges, swan geese, golden-breasted starlings, Bourke's parrots and blue-gray tanagers (both zoo firsts).

On the mammal side, a tiny Moholi bushbaby emerged from its tree den at Regenstein Small Mammal-Reptile House in February. The Bolivian gray titi monkey breeding pair also welcomed their ninth offspring at the Helen Brach Primate House in August.

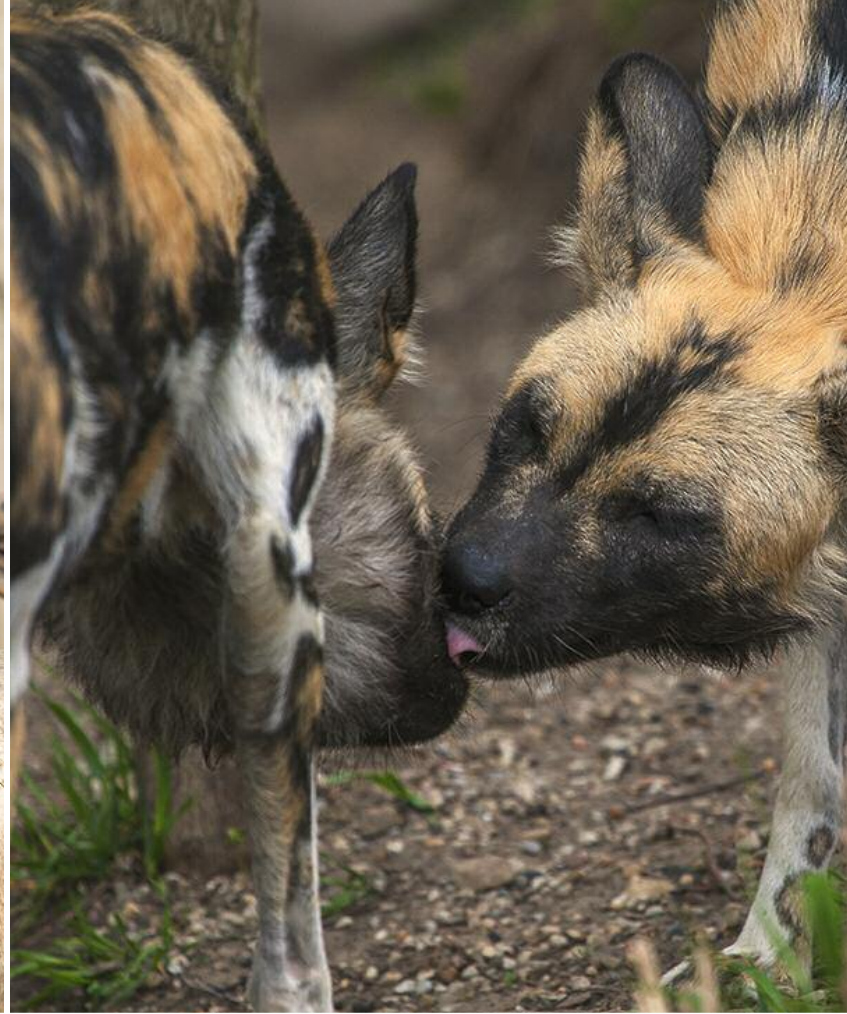
Babies weren't the only new arrivals, of course. The zoo welcomed red river hogs, spotted hyenas, Kenya crested guineafowl, servals, ostriches, cactus mice, a male red kangaroo, a female klipspringer and an all-female African wild dog pack. These changes reflect the commitment of zoos across the country to working together to sustain species.

Finally, the zoo once again received



the key seal of approval from the Association of Zoos and Aquariums Accreditation Committee. After a rigorous inspection and review process, the AZA renewed our accreditation in September, reinforcing Lincoln Park Zoo's commitment to world-class conservation, education and care.





*(Opposite) Groundbreaking gorilla changes at Regenstein Center for African Apes produced a mixed family group headed by silverback Kwan and the zoo's first-ever all-male bachelor troop. (This page, clockwise from top left) new arrivals included takins Mengyao and Xing Fu, an all-female African wild dog pack, Kenya crested guineafowl, red river hogs and Grevy's zebra colt Kito.*







## Education

An innovation center with global reach opened its doors, and visitors of all ages continued to enjoy learning about nature.

The zoo's status as a learning leader achieved a new milestone this past year: the February launch of the Hurvis Center for Learning Innovation and Collaboration. Funded by a generous \$3 million gift from the Hurvis Charitable Foundation, this innovative center will use cutting-edge research and programs to explore how zoos, aquariums and museums can most effectively engage their audiences. Led by Senior Director Leah Melber, Ph.D., the Hurvis Center will partner with schools down the street and institutions a world away—all to find the best ways to learn about science and nature.

Initial offerings include Career Explorers and the Research Apprenticeship Program, both giving Chicago-area students the chance to explore careers in zoos and research. The upcoming Partnerships in Fieldwork program will enlist students and teachers to collect wildlife data from monitoring stations set up on school grounds as part of the zoo's Urban Biodiversity Monitoring Project.

The Hurvis Center's Observe to Learn initiative will connect kids around the world with nature through self-guided animal observations. The project includes a free iPad

app developed by Hurvis Center educators. It will enable users to explore animal behavior in their backyard, local zoo or nature area, just as the zoo's scientists do.

Global connections were also in full bloom last spring with the successful conclusion of the zoo's Community of Conservation partnership. The yearlong effort linked students in Niger with peers at Chicago's Francis W. Parker School. Colleagues from the National Museum of Niger Boubou Hama traveled to Chicago to experience the zoo, the city's culture and a classroom visit at the school. Their visit was funded through the American Alliance of Museums and the U.S. Department of State's Bureau of Educational and Cultural Affairs' Museums and Community Collaborations Abroad program.

This spring, learning and fun took another form as nearly 100 kids—4-year-olds to fourth graders—attended the inaugural Spring Break Camp at the zoo. Focusing on the animals of the Americas, campers took part in activities centered on animal diversity, environmental conservation and the ways in which Lincoln Park Zoo cares for animals at the zoo and protects them in the wild. Little ones used their senses to explore

everything from box turtle camouflage to a caribou pelt while older campers discovered how researchers travel to wild sites around the globe.

Throughout the year, learners of all ages chose from an array of education programs, spotlighting subjects from animal adaptations to hormone research. Guests learned about population recovery efforts for the endangered Puerto Rican parrot and danced to a live salsa band after-hours at Wine & Wildlife: Puerto Rican Plumage on November 7. The popular evening series also highlighted animal courtship behaviors—and select vintages—at its Animal Attractions program on Valentine's Day.

Finally, animal attractions that cause harm were the message of Primates Don't Make Good Pets. This new initiative educates the public on the destructive consequences of keeping monkeys and apes as pets. It also highlights how to support proper stewardship of these amazing species.

*The Observe to Learn app produced by the new Hurvis Center for Learning Innovation and Collaboration offers an exciting tool for connecting learners with nature. Other fun learning experiences included a new Spring Break Camp.*





# Events

Diverse events—from family fun to sparkling soirées—turned the zoo into an exciting hub of activity throughout the year.

The Women's Board of Lincoln Park Zoo scored a roaring success July 13 with Zoo Ball 2012. Themed "The Great Catsby," the gala chaired by Suzanne A. Meder and Cindy Ross Polayes transported more than 1,000 guests to the elegance of the Hamptons for an evening of cocktails, entertainment and gourmet dining. The best treat of all: more than \$1.2 million raised for the Women's Board pledge toward Nature Boardwalk at Lincoln Park Zoo. Generous support was provided by presenting sponsor Guggenheim Partners, LLC; silver sponsor J.N. Pritzker/Tawani Foundation/Pritzker Military Library; and entertainment sponsors Marcus Lemonis and Beth Levine. Additional support was given by Sentient Jet and United Airlines.

Zoo-ologie, the Auxiliary Board of Lincoln Park Zoo's annual fundraiser, welcomed more than 1,000 people to its sold-out, upscale cocktail party on June 1, 2012. Guests savored gourmet bites from trend-setting Chicago restaurateurs while providing support the zoo relies on to remain free and open. Thanks to event co-chairs Frank Favia, Melissa Kearney and Jodi McNally and sponsors including Akira Chicago, CS Magazine and Rockit Ranch Productions.

ZooLights Presented by ComEd and Charter One welcomed a record-setting 420,000 guests to enjoy the spectacle of 2 million brilliant lights. Thanks to ComEd, Charter One, MINI of Chicago, United, Pepsi, 93.9 Lite FM and, as always, the support of the Chicago Park District on behalf of the citizens of Chicago.

Last June, thousands of runners tried for personal bests during United Run for the Zoo. United Airlines, New Balance Chicago, Lifeway Kefir, Starfruit Café ArcelorMittal, Midwest Foods, The Belden Stratford and Walgreens supported this highlight of the Chicago running calendar.

Thousands of participants also tapped their feet to Neon Trees, Hedley, Better Than Ezra, Tony Lucca, Hot Chelle Rae and Allstar Weekend during the summer's Jammin' at the Zoo concert series. Thanks

to sponsors Pepsi, MINI of Chicago, United Airlines and 101.9 FM The Mix.

Hopping of a different sort took place at the zoo's inaugural Easter Egg-stravaganza on April 7, 2012. Visitors met the Easter Bunny at the Farm-in-the-Zoo and enjoyed an egg hunt and outdoor breakfast buffet. The second, held on March 30, 2013, was even better—a sell-out!

Adults and parents with toddlers stretched out during another season of Yoga at the Zoo Presented by Walgreens. Classes took place from June to September in a spectacular outdoor location: the Nature Boardwalk's Peoples Gas Education Pavilion. Thanks to Walgreens and contributing sponsor LUNA.

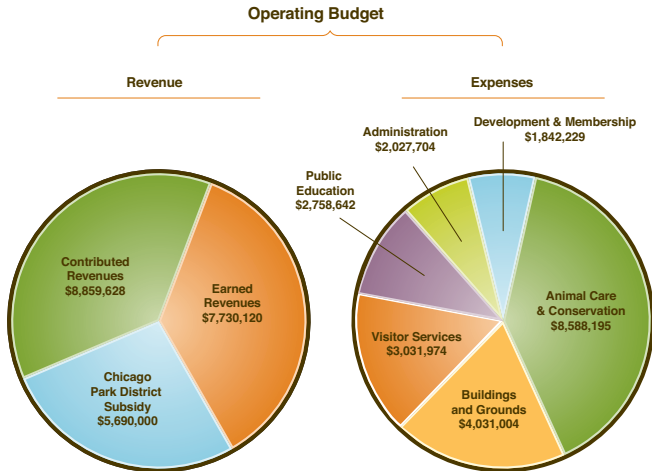
Natural beauty was also on display Wednesday, August 1, during the Wine & Wildflowers Garden Party hosted by Lincoln Park Zoo's Garden & Sculpture Committee and event chair Margo Morris. Guests enjoyed live bluegrass music, barbecue bites and wine on the verdant shore of the Hope B. McCormick Swan Pond.

Finally, a more homespun hoedown took place during Harvest Days at the Farm-in-the-Zoo in mid-October. The seasonal activities for families and guests included pumpkin decorating, food and ADOPT an Animal giveaways. Thanks to sponsors Clif Kid, Whole Foods Market and Lifeway Kefir.

*President and CEO Kevin Bell poses with Zoo Ball co-chairs Cynthia Ross Polayes and Suzanne A. Meder and former Women's Board President Abby Zanarini at The Great Catsby. Former Auxiliary Board President Deborah Barr and Zoo-ologie 2012 co-chairs Melissa Kearney, Frank Favia and Jodi McNally enjoy a successful evening at Zoo-ologie. Guests relaxed to summer sounds at last year's Jammin' at the Zoo concert series. A record-setting 420,000 guests enjoyed the lights at last year's ZooLights Presented by ComEd and Charter One.*

# Financials

**THANKS TO THE GENEROUS SUPPORT** of our donors, members and millions of visitors, Lincoln Park Zoo ended the year with a balanced operating budget. To view a complete version of our year-end financials, please visit [www.lpzoo.org](http://www.lpzoo.org).



## The Lincoln Park Zoological Society Statements of Financial Position March 31, 2013 and 2012

### ASSETS

Assets	2013 (unaudited)	2012
Cash	\$1,715,317	\$1,821,094
Investments	\$77,553,394	\$74,589,149
Investments-Other	\$9,368,286	\$2,852,376
Receivables		
Pledges and grants, net	\$27,164,668	\$5,249,434
Other	\$244,348	\$394,561
Inventory	\$434,775	\$440,924
Other assets	\$733,570	\$796,978
Fixed assets	\$1,242,641	\$1,126,572
<b>TOTAL ASSETS</b>	<b>\$118,456,999</b>	<b>\$87,271,088</b>

### LIABILITIES AND NET ASSETS

#### Liabilities

Payables		
Accounts payable	\$1,559,884	\$1,743,747
Annuities payable	\$218,631	\$195,125
Accrued expenses	\$1,008,516	\$1,040,064
Deferred Revenue	\$624,500	--
Commercial Paper	\$40,000,000	\$40,000,000
<b>TOTAL LIABILITIES</b>	<b>\$43,411,531</b>	<b>\$42,978,936</b>

#### Net Assets

Unrestricted	\$17,397,611	\$5,595,889
Temporarily restricted	\$29,923,892	\$11,477,378
Permanently restricted	\$27,723,965	\$27,218,885
<b>TOTAL NET ASSETS</b>	<b>\$75,045,468</b>	<b>\$44,292,152</b>
<b>TOTAL LIABILITIES AND NET ASSETS</b>	<b>\$118,456,999</b>	<b>\$87,271,088</b>

The report covers The Zoological Society's fiscal year, which began April 1, 2012, and ended March 31, 2013.

#### BOARD OF TRUSTEES

##### OFFICERS

John Alexander  
*Chairman*

John R. Ettelson  
*Vice Chair of Finance,  
Chairman Elect*

Mary B. Babson  
*Vice Chair*

Thomas L. McLeary  
*Secretary*

Kevin J. Bell  
*President and CEO*

##### TRUSTEES

Trisha Rooney Alden  
Charles Barone  
Tracey E. Benford  
David P. Bolger  
Stephen Bonner  
S. Biff Bowman  
Michael S. Canmann  
Joseph S. Carr

James E. Compton  
Sean J. Conlon  
Ron Culp  
Francesca M. Edwardson  
Marc S. Feldstein, M.D.  
Jamee C. Field  
Andrew J. Filipowski  
John D. Fornengo  
Shilpi Gupta  
Mrs. Caryn Harris  
Stephanie F. Harris  
Barbara Higgins  
Roger G. Hill II  
Dan Hillenbrand  
Rich Jernstedt  
Jon Kaplan  
Elizabeth Karlson  
David M. Keller  
Judy Keller  
Barbara Malott Kizziah  
Karen Rose Krehbiel  
Jennifer Ames Lazzar  
Alexander R. Lerner  
Randall E. Mehrberg  
Elizabeth Mihas  
C. John Mostofi  
Stuart C. Nathan  
James M. Neis  
David L. Nichols  
Carleton Pearl  
Greg Pearlman  
Anne Pramaggiore  
Mayari Pritzker  
Jay Proops  
Kelly Darin Rainko

James M. Rauh  
Susan Regenstein  
Myra Reilly  
Tierney B. Remick  
Carole B. Segal  
Richard L. Sevcik  
Dr. Susan Sherman,  
D.V.M.  
Tony Toulouse  
Kimbra Walter  
Hossein Youssefi

##### EX OFFICIO

Annessa Staab  
Peggy White

##### LIFE TRUSTEES

William C. Bartholomay  
William E. Bennett  
Gerald K. Bergman  
Terrance J. Bruggeman  
Raymond Drymalski  
Dr. Lester E. Fisher  
Rodney L. Goldstein  
Mrs. Donald E. Gross  
John H. Hart  
Jonathan Kovler  
Lawrence F. Levy  
Lynn Martin  
Dr. Howard C. Morgan  
Sarah Pang  
Mrs. William L. Searle  
Brian Simmons  
Marion E. Simon  
Abra Prentice Wilkin

#### HONORARY TRUSTEES

Barbara W. Carr  
The Honorable  
Richard M. Daley  
Marshall Field  
Robert W. Lane

#### WOMEN'S BOARD

##### OFFICERS

Peggy White  
*President*

Susan F. Erler, Ph.D.  
*Vice President,  
Membership*

Karen V. Peterson  
*Vice President, Programs  
& Administration*

Joan Leydon Siff  
*Vice President,  
Development*

Allyson Pooley  
*Treasurer*

Katie Gledhill  
*Secretary*

#### ACTIVE MEMBERS

Jennifer Arquilla Bocik  
Katherine Wood Baldwin  
Adrienne Barnaby  
Reggie Beckman  
Alice Beninati  
Ann H. Benjamin  
Kimberley M. H. Bolden  
Alison Hefelee Bonney  
Carol Brandt  
Rhonda Buss  
Bridget Campbell  
Martha E. Cannis  
Jennifer Caruso  
Debra M. Clamage  
Mrs. Thomas C. Clark  
Marcia S. Cohn  
Colleen Kennedy Cole  
Kate Covington  
Cynthia P. Curtis  
Patricia G. Cutilletta  
Margaret Dickerson  
Karen DiJohn  
Karen S. Eisenbart, Ed.D.  
Susan Flynn  
Tara Fowler  
Enid Gardner  
Leann Gariti  
Lisa Genesen  
Mrs. Peter Francis  
Geraci  
Denise Stefan Ginascol  
Carol Whittaker Gonsky  
Gale M. Gottlieb  
Dr. Vicki M. Greene

Ms. Pamela Hanratty  
Tricia Heintze  
Caroline Huebner  
Shawn Ingall  
Ms. Leslie C. Jackson  
Rosemary Jones  
Lorraine C. Kaplan  
Beth Kier  
Wendy I. Krimsins  
Sharon Ladd  
Sonia Blicharz Larkin  
Rita Lashmet  
Mrs. Grace H. Leffel  
Mary C. MacGregor, D.O.  
Kimberli Macpherson  
Deborah L. Madlener  
Suzanne A. Meder  
Charlotte K. Monhart  
Brigid Najarian  
Kathleen Nowlin  
Susan Oltmanns  
Patricia Organ  
Kimberly Orput  
Mary O'Brien Pearlman  
Carolyn Kae Phillips  
Cindy Ross Polayes  
Molly Porterfield  
Sarah Potter  
Myra Reilly  
Kim Rice  
Kirsten Rider  
Kathleen O'Hagan  
Scallan  
Martha A. Peterson Shaw  
Peggy Snorf



Leslie Sulger  
Frances Swerdlow  
Melinda Sherman Swift  
Kimberly Theiss  
Mrs. Robert D. Tice  
Christine Tierney  
Adrienne Traisman  
Kimbra Walter  
Mrs. Vasiliki Weiden  
Amy Welzer  
Trudene Westerman  
Eileen M. Whennen  
Mrs. Karen C. Williams  
Heather M. Wright  
Abby D. Zanarini  
Leslie Zentner

#### ASSOCIATE MEMBERS

Mrs. James H. Anderson  
Mrs. Duncan B. Ashurst  
Susan T. Bankard  
Penny Powers Beitler  
Mrs. John V. Crowe  
Linda Fifield  
Mrs. James M. Flanagan  
Karen Goodyear  
Betty Koenig Greenwald  
Chandra A. Greer  
Mrs. Donald E. Gross  
Jean Hagerty  
Mrs. David R. Hamilton  
Josephine E. Heindel  
Nancy C. Kelley  
Mrs. John Kinsella  
Donna LaPietra  
Mrs. Victor L. Lewis, Jr.  
Betsy C. McCormick  
Patricia Monhart  
Nan Nygaard  
Roberta Olshansky  
Elizabeth A. Parker  
Mrs. Jerry K. Pearlman  
Marlene W. Phillips  
M. Kay Proops  
Shirley Welsh Ryan  
Diana M. Senior  
Mrs. Thomas C. Sheffield, Jr.  
Maureen Dwyer Smith  
Diane Sprenger  
Mrs. William D. Staley  
Nancy A. Trainer  
Dana Shepard Treister  
Bonnie McBride Uhler  
Joan Sulzer Werhane  
Janice Wong

#### LIFE MEMBERS

Mrs. Charles A. Ault III  
Mrs. Margaret Dunne  
Judy Keller  
Jeanine McNally  
Mrs. Barburo T. Reeve  
Deborah A. Stocker  
Abra Prentice Wilkin

#### NON-RESIDENT MEMBERS

Courtney M. Cavatoni  
Sally Engels  
Pamela L. Goldie-Morrison

Lesli K. Henderson  
Courtney J. McEniry  
Andrea Spiegel

#### AUXILIARY BOARD

##### OFFICERS

Annessa Staab  
*President*  
  
Melissa Kearney  
*Vice President*  
  
Frank J. Favia, Jr.  
*Vice President, Development*

John Casper  
*Treasurer*

Elissa J. Lafayette  
*Secretary*

##### ACTIVE MEMBERS

Justin Alden  
Nicholas Apostal  
Monica Banasiuk  
Deborah Ellison Barr  
Cassandra A. Becker  
Andrew Bleiman  
Jessica Boike  
Mark Buechler  
Christopher G. Cook  
Christina Davis  
Meghann Dowd  
Elizabeth Dukes  
Stephanie Eisel  
Paul Gamboa  
Regan Lynch Gentile  
Andrew Georgevich  
William S. Hackney  
Patrick Hillmann  
Lauren Hood  
Lindsay Humphreys  
Katie Jackson  
Kathleen Kelley  
David Kimball  
Jeffrey Klug  
Marisa Knudsen  
Valerie Krasnoff  
Tracy Lyerly  
William Lyerly  
Mandy Manning  
Joseph Manzella  
Gregory C. Mayer  
James McCormick  
Jodi McNally  
Katharine Melzer  
Katie Mischka  
Lars M. Montag  
Sarah Myer  
Erin O'Brien  
Kate Orloff  
Aubrey Parlet  
John Pellettieri  
Christine E. Post  
Danyelle Post  
Brent P. Ray  
Michelle Retzlaff  
Jacob Ringer

Dugan Schwalm  
Christine Sears  
Dana Snodgrass  
Jennifer Splawski  
Jennifer L. Statler  
Keith K. Stocker, Jr.  
Tara Dunne Stocker  
Mark P. Styles  
Jennifer Teubl  
Destiny Thompson  
Baomy Truong Wehrle  
Melanie Walsh  
Megan Wiegand  
Tate Haugen Wiggins  
Steven E. Wolf  
Alice M. York  
Sarah Zaute

##### SUSTAINING MEMBERS

Rob Adam  
James W. Adams, Jr.  
Mary-Audrey Atteberry  
Stephen C. Baker  
Sally Burma Beatty  
Ramona M. Biliunas  
Joseph S. Carr  
Susan Chernoff  
Jessica Q. Coleman  
Cynthia P. Curtis  
Stephanie L. Degen  
John E. De Vine III  
Michael Devine  
Renée A. Diver  
John D. Fornengo  
Hollis R. Hanover  
James P. Hickey  
Roxanne Hori  
Christine M. Jack  
Karen Stone Kaplan  
Elizabeth J. Kelly  
Barbara Malott Kizziah  
Tina M. Koegel  
Howard S. Lanznar  
Leslee A. Larson  
Robert R. LeClercq  
Lori Lynch  
Jennifer P. Martay  
Alexandra G. Nikitas  
Greg Pearlman  
Neal L. Pearlman  
Isabelle Perrault  
Allyson Pooley  
Stacey Riddell  
Richard L. Sevcik  
Tempel J. Smith  
Hossein Youssefi

##### NON-RESIDENT MEMBERS

Sarah F. Back  
Dawn Boney  
Meredith A. Cline  
Elizabeth Hood  
Michael Kahn  
Kevin Lloyd  
Tiffany Makaus  
Thomas W. McGrath  
Mike Moore  
John N. Newell  
Stephanie Rendon

Cherie A. Richardson  
Jason Schmitt  
Pamela Schroeder  
Daniel Silverfield  
Jessica M. Swift  
Edi Thimons  
Jesse Willis

##### HERITAGE SOCIETY

We honor individuals who have made a commitment to the zoo through their estate plans.

Anonymous (33)  
Dr. Farida Ahmed, M.D.  
Mr. Jonathan S. Alter  
Geoffrey A. Anderson  
Mr. and Mrs. Nicholas C. Babson  
Dean Balice  
Troy Baresel  
Johny Beaugez  
Mr. Kevin J. Bell  
Susan Bernstein  
Gerald Berstell  
Mr. John A. Beton  
Drs. Vanice (Van) and Ernest Billups  
Mr. David P. Bolger  
Mr. Jerome Broekema  
Terrance J. Bruggeman and Dianne Dyer-Bruggeman  
George\* and Jacqueline Brumlik  
Robert G. Cappaert  
Dr. David A. Charnota  
Carol Christiansen  
Debra M. Clamage  
Sue and Jim Colletti  
Alice Cooperman  
Ms. Mary P. Cusack  
Mr. and Mrs. Peter A. Czuchra  
Mr. and Mrs. Robert Doak  
Gwen Dragutinovich  
Raymond Drymalski  
Nancy Duke  
Miss Shirley M. Evans and Mr. Kenneth A. Evans\*  
Marilyn D. Ezri, M.D.  
Mary and Bruce Feay  
Honor and Gene Ferretti  
Ellen Filurin  
Dr. Lester E. Fisher  
Mr. and Mrs. Robert Fryer  
Mrs. Gregory L. Fugiel  
Ms. Linda Fuller  
Matthew A. Gelbin  
Lyle Gillman  
Denise Stefan Ginascol  
James R. Glass III  
Mr. Jack Goggin  
Michael Goldberger  
Georgean Goldenberg  
Mary Dent Gray  
Jean McBride Greene  
Jean A. Griggs  
Katharine C. Gross

Barb and Glenn Grossklags  
Mr. and Mrs. David D. Grumhaus  
Mr. and Mrs. Charles C.\* Haffner III  
Ms. Beth M. Halevy  
Mr. Richard Halvorsen  
Ms. Jeanne M. Hansen  
John W. Palma, Jr. and Gina H. Harris  
Joyce E. Heidemann  
Josephine E. Heindel  
Mr. and Mrs. Allen R. Hochfelder  
Elizabeth B. Hood  
Robert J. Horton and James C. Perry  
Caroline and Charles K. Huebner  
Mr. and Mrs. Michael J. Hughes  
Robert A. Johnson  
Dr. Anne M. C. Juhasz  
Jack Kanuk  
Roberta and Don Karper  
Judy and John Keller  
Patricia Klemz  
Tania M. Kokott-Schmidt  
Dennis Kravetz  
Ms. Mary E. Kreppel and Mr. David W. Diehl  
Jane S. LaRue  
Grace H. Leffel  
Ms. Ruth W. Lekan  
Suzanne and Joseph Lysy  
Jo Anne Maczulski  
Ms. Margaret L. Maczulski  
Mr. Gregory J. Mader  
Ms. Mary E. Mako  
Clarence E. Malmin  
The Honorable Lynn Martin and The Honorable Harry D. Leinenweber  
Mrs. Winifred A. Martin  
Mr. Edward J. Matusek  
Nancy A. McDaniel  
Barbara McGraw  
Thomas McLeary  
Leah Melber, Ph.D.  
Lynn Leon and Vicky Miller  
Stuart and Nancie Mishlove  
Albert and Nancy Niemi  
Jo Ann Noble  
Ms. Clarice R. Norin  
Mariann O'Brien  
Mr. and Mrs. Paul W. Oliver  
Anne and Harry Olsen  
Carol M. Overman  
Bliss Packer and Richard Pleet  
Ms. Elizabeth A. Parker and Mr. Keith S. Crow  
Nancy Peterson and Robert Benacka  
Mr. and Mrs. Leonard F. Pflughaupt  
Mr. and Mrs. Thomas D. Phillipsborn  
Gordon\* and Ineke Phillips  
Mayari Pritzker



Catherine F. Quinlan  
 Mrs. Alan L. Rappaport  
 Ms. Susan L. Regenstein  
 Carole Reuber  
 Miss Kathleen Rice and  
 Mr. Barry A. Sears  
 Deborah Ritter  
 Mr. Robert D. Rodgers\*  
 Ms. Anita J. Rogers  
 Ben and Barbara Rooks  
 Dr. Olivia M. Scarse  
 Gerta Schild\*  
 Carl and Barbara Schwebel  
 Florence M. Siefkens  
 Ms. Henriette Simon  
 Marion E. Simon  
 Roy Slovenko\* and  
 Paula Wise  
 Rebecca Gray Smith  
 Mr. and Mrs. Robert M.  
 Stephenson  
 Mr. Thomas W. Stephenson  
 Dr. Mark W. Stolar  
 Mary A. Taft  
 Kim and Steve Theiss  
 Ms. Karen Thomas  
 Steven D. Thompson and  
 Debra Kerr  
 Ms. Marilyn T. Trice  
 Paul and Judith Tuszynski  
 Linda G. Ulreich  
 Mr. Robert G. Walberer  
 Belle Waldfoegel  
 Dr. Margaret M. Walsh-Reitz  
 and Mr. Roger L. Reitz  
 Elizabeth K. Ware  
 Mr. and Mrs. Frank R. Weiner  
 Ms. Bessie Weintraub\*  
 Ms. Gay Weissenberger  
 Trudene Westerman  
 Mr. Ken C. Whitener, Jr.  
 Virginia L. Whittaker  
 Ms. Patricia A. Wood  
 Ronald Yenerich and  
 Will Urban  
 Mr. and Mrs. Hossein  
 Youssefi  
 Drs. Joan and Russ  
 Zajchuk, M.D.  
 Ms. Candise Zake  
 Tom and Sherry Zimmerman  
 Christine M. Zrinsky

#### ESTATE GIFTS

Elsa E. Bandi  
 Jo an Baur  
 Rose Carlevato  
 Miriam Federgren  
 Shirley L. Koch  
 Charles C. Haffner  
 Renee B. Lameka  
 Josephine M. Leiting  
 Wilhelmine E. Long  
 Brooks McCormick  
 Gwendolyn V. Norton  
 Adine Stayman  
 Thomas E. Usher  
 Charles H. Wilson

#### CHARITABLE ANNUITIES ESTABLISHED

Ms. Mary E. Mako  
 Mr. Clarence E. Malmin

#### ANNUAL FUND CONTRIBUTORS

We recognize contributors  
 who make vital, unrestricted  
 donations to support our  
 mission.

#### INDIVIDUALS

##### \$100,000 and above

Anonymous (1)  
 Emily and John Alexander  
 Mrs. Sally B. Searle and  
 the Searle Family  
 Women's Board of  
 Lincoln Park Zoo

##### \$25,000 to \$99,999

Anonymous (2)  
 Auxiliary Board of  
 Lincoln Park Zoo  
 Mr. and Mrs. Peter Barrett  
 Jean, Jack and Tim Barry,  
 Greg McKee, the Lael  
 Stanczak Family and The  
 McKee Family Foundation  
 Crown Family  
 Mr. and Mrs. John Ettelson  
 Jamee C. Field  
 Caryn and King Harris  
 Jonathan Kovler/The Kovler  
 Family Foundation  
 Malott Family Foundation  
 Susan Regenstein and  
 Barry Frank  
 Mr. Robert D. Rodgers\*  
 Mr. and Mrs. Michael D.  
 Searle  
 Mr. and Mrs. Joseph R.  
 Swanson  
 Walter Family Foundation, Inc.

##### \$15,000 to \$24,999

Anonymous (1)  
 Mr. and Mrs. James E.  
 Compton  
 John and Francesca  
 Edwardson  
 Kris and Phil Elbert  
 Mr. and Mrs. Warren J.  
 Hayford  
 Mary P. Hines  
 Ms. Sharon Karsten and  
 Mr. Frank M. Malone  
 Mr. and Ms. Joseph Mansueto  
 Fredericka Meyer Trust  
 Mr. and Mrs. C. John Mostofi  
 Sarah Pang and  
 Bruce Munies  
 Mrs. Mayari A. Pritzker  
 Mr. and Mrs. Joseph  
 Regenstein III  
 Dr. June K. Robinson and  
 Mr. William T. Barker  
 Mr. Elden J. Schnur

##### \$10,000 to \$14,999

Mary and Nicholas Babson  
 Charles Barone and  
 Susan Keiffer Barone  
 Mr. and Mrs. Stephen M.  
 Bartram  
 Mr. Kevin J. Bell  
 Tracey and Ed Benford  
 David P. Bolger  
 The Bonner Family  
 Sean J. Conlon  
 Mr. and Mrs. Ronald Culp  
 Mr. and Mrs. Fritz L. Duda  
 Mrs. Patricia K.  
 Duffy-Johnson  
 Miss Shirley M. Evans and  
 Mr. Kenneth A. Evans\*  
 Mrs. Virginia F. Faesen  
 Andrew J. Filipowski and  
 Melissa Oliver  
 Stephanie and John Harris  
 John Hart and Carol Prins  
 Bill and Barbara Higgins  
 Mrs. Gretchen M. Hoffmann  
 and Mr. Joseph S. Doherty  
 Lorraine and Jon Kaplan  
 David and Avery Keller  
 Judy and John Keller  
 Mr. Randall E. Mehrberg and  
 Ms. Michele Schara  
 Elizabeth and Constantine  
 Mihas  
 Jo Ann and Stuart Nathan  
 Mr. and Mrs. James M. Neis  
 Greg and Mary Pearlman  
 Anne Pramaggiore and  
 Michael Harrington  
 Mr. and Mrs. Jay Proops  
 Kelly and Brad Rainko  
 Carole and Gordon Segal  
 Susan and David Sherman  
 Julie and Brian Simmons  
 Mr. Kenneth N. Traisman  
 Mr. and Mrs. H. Blair White  
 The Abra Wilkin Fund

##### \$5,000 to \$9,999

Anonymous (4)  
 Mr. E. M. Bakwin  
 Mr. Troy D. Baresel  
 Mr. Lawrence Blum  
 Biff and Colleen Bowman  
 Susan and Michael  
 Canmann  
 Mr. Stanton R. Cook  
 Lawrence O. Corry  
 Bob and Cathy Daly  
 Mr. and Mrs. Marshall Field  
 Sue M. Fogarty  
 John D. Fornengo  
 Mr. Gerald Freedman  
 Jean McBride Greene  
 Mr. and Mrs. Shilpi Gupta  
 Mr. and Mrs. Daniel C.  
 Hillenbrand  
 Mr. and Mrs. Robert B.  
 Hoellen  
 Janice Honigberg and  
 John Hedges  
 Rich and Jeani Jernstedt

Mr. and Mrs. James C.  
 Johnson  
 Mr. and Mrs. Thomas S.  
 Karlson  
 Mr. and Mrs. Michael L. Keiser  
 Mr. and Mrs. Norman A.  
 Koglin  
 Ms. Lois J. Korda  
 Mr. and Mrs. William Krehbiel  
 Jennifer Ames Lazarre and  
 Paul E. Lazarre  
 Liz and Eric Lefkofsky  
 Lynn Martin and Harry D.  
 Leinenweber  
 The Howard and Kennon  
 McKee Charitable Fund  
 Mr. and Mrs. Thomas L.  
 McLeary  
 Mr. and Mrs. David L. Nichols  
 Brad and Susan Oltmanns  
 Gordon\* and Ineke Phillips  
 Frank and Karen Ptak Family  
 Foundation  
 Mr. and Mrs. James M. Rauh  
 Mr. Jacob Ringer  
 Ms. Cindy Scalzo and  
 Dr. Henry G. Brown  
 Mr. and Mrs. Barre Seid  
 Bessie Shields Foundation  
 Mr. and Mrs. Romolo Sidoli  
 Bobby and Kitty Tataryn  
 Dale Taylor and  
 Angela Lustig  
 Mr. and Mrs. Steven M.  
 Theiss  
 Mr. and Mrs. Tony Toulouse  
 Carrie and Jay Weaver  
 Mr. and Mrs. Brian J. White  
 Mr. and Mrs. Hossein  
 Youssefi

##### \$3,000 to \$4,999

Anonymous (1)  
 Mr. and Mrs. John W. Allyn, Jr.  
 Aaron and Priscilla Barlow  
 Mr. and Mrs. Henry T.  
 Chandler  
 Dr. Dave, Kendal,  
 William and Kyle  
 Sue and Jim Colletti  
 Mary and Bruce Feay  
 Monique and Stanley  
 Friedman  
 The Glass Family  
 Mrs. Jean A. Griggs  
 Josephine E. Heindel  
 Diane and David B. Heller  
 Foundation  
 William and Vanessa  
 Jacobsen  
 Mr. Allan L. Maca  
 Mr. Robert T. Markowski and  
 Ms. Randi J. Ragins  
 Thomas J. and Sue McDowell  
 Dr. and Mrs. Stephen J.  
 Mendak, Jr.  
 Mr. Andrew Mitzenmacher  
 and Mrs. Lauren  
 Niimi-Mitzenmacher  
 Michelle Kopp Rakoczy

Patricia C. Reavy  
 Myra and John Reilly  
 The Schroeder Foundation  
 Rose L. Shure  
 Denise Stefan Ginascol  
 Ms. Audrae A. Stephen  
 Drs. Jake and Cyndi Tabel  
 Steven D. Thompson and  
 Debra Kerr  
 Scott Turow and  
 Adriane Glazier  
 Elliot Weisenberg, M.D., and  
 Clara Orban, Ph.D.

##### \$2,000 to \$2,999

Anonymous (1)  
 Mary and Mike Abroe  
 Christine Albright and  
 Lawrence Gill  
 Geoffrey A. Anderson  
 Glen and Ann Argall  
 Mr. and Mrs. Ronald R.  
 Baade  
 Dean Balice  
 The Baranek Family  
 Brent Beardsley  
 Johnny Beaugez  
 Diane and Michael Beemer  
 Mr. and Mrs. Francis  
 Beidler III  
 Ms. Corinne H. Blotnicki  
 Ms. Carol Brandt and  
 Mr. William Blaha  
 Amy D. Brody  
 Terrance Bruggeman and  
 Dianne Dyer-Bruggeman  
 Ms. Debra A. Cafaro  
 Mr. and Mrs. John G. Caruso  
 Marcia S. Cohn  
 Ms. Rebecca Coke and  
 Mr. Chris Buekenkamp  
 Barbara A. Cook  
 Mr. and Mrs. Bruce A. Crown  
 Joann and Nathan Dardick  
 Judy and Bill Davis  
 Mr. and Mrs. Michael W.  
 Devine  
 Mr. and Mrs. Jon Dokmo  
 Mr. and Mrs. Thomas E.  
 Donnelley II  
 Mrs. Arthur L. Dunne  
 Lisa and Geoffrey Dybas  
 Dr. Karen S. Eisenbart and  
 Mr. Thomas R. Eisenbart  
 Enivar Charitable Fund  
 Dr. and Mrs. Marc S. Feldstein  
 Dr. Lester E. Fisher  
 Paul and Christy Fisher  
 Mr. and Mrs. Kevin F. Flynn  
 Jim and Karen Frank  
 Marcia and Jim Franklin  
 Kate and Michael Fridholm  
 Enid G. Gardner  
 William and Lynda Gardner  
 Mr. and Mrs. Matthew A.  
 Gelbin  
 The Law Offices of Peter  
 Francis Geraci  
 Brent and Katie Gledhill



Mr. and Mrs. Rodney L. Goldstein	Mr. and Mrs. John F. Siff Marion E. Simon	Mr. Joseph Butler and Dr. Naomi Donnelley	Skip and Meg Herman Family Foundation	Francine and Benjamin Morof Ms. Lois Morrison and Mr. Justin Daab
Mr. and Mrs. Ronald M. Gonsky	Mrs. Brittany A. Smith Patrick Stack and Geeta Kharkar Stack	Brenda L. Campbell Mr. and Mrs. John T. Cannis	Ms. Tracy Hickman and Mr. Chad Munger	Mr. and Mrs. Jon Najarian New Prospect Foundation
Mr. and Mrs. Alfred E. Hackbarth, Jr.	Carol Stein-Sterling and James Sterling	Mr. and Mrs. Stephen Carloti Richard and Ann Carr	Jeff and Carol Holden Bill and Vicki Hood	Mr. and Mrs. John Neyer Mr. and Mrs. William J. O'Neill
Hamill Family Foundation	Mr. and Mrs. Mark P. Styles Mr. and Mrs. Blake H. Swift	Mr. Mark Chojnowski Mrs. Frances H. Colburn	Ms. Roxanne Hori and Mr. Robert Felsenthal	Mr. and Mrs. John O'Toole Mr. Carleton D. Pearl
Mr. and Mrs. Raymond V. Hartman	Richard & Helen Thomas Family Foundation	Mr. and Mrs. David L. Cole Mrs. Gary C. Comer	Robert J. Horton and James C. Perry	Jean Perkins and Leland Hutchinson
Mr. and Mrs. Thomas Z. Hayward, Jr.	Mr. Theodore D. Tiekens, Jr.	Mr. Andrew Conwell Nancy Raymond Corral	Mrs. Arnold Horween Mr. and Mrs. John G. Howland	The Peters Creek Fund Ms. Denise Peterson
Joyce E. Heidemann	Ms. Christine M. Tierney and Mr. Jeffrey P. Jordt	Mr. and Mrs. Robert W. Culver Dr. Anthony and Mrs. Patricia Cutilletta	Ms. Clarissa C. Hunnewell Mr. and Mrs. Lewis S. Ingall	Don and Anne Phillips Ms. Allyson Pooley
Mr. Roger G. Hill and Mrs. Eva Wassermann	Dr. and Mrs. Edward S. Traisman	Mr. and Mrs. Stanley R. Day Bob and Jill Delaney, Jr.	Mr. and Mrs. David L. R. Jacoby	Mr. and Mrs. Dennis B. Propp John and Betsy Puth
Rose M. Houston	Dana Shepard Treister and Dr. Michael Roy Treister	Mr. Robert O. Delaney Dr. Margaret Dickerson and Dr. Robert Fliegelman	Mr. and Mrs. Richard Jaffee Ms. Magda Jakubowska	Mr. and Mrs. John R. Raitt Mr. Jochen A. Renz and Ms. Agnes Ptasznik
Mr. and Mrs. Charles K. Huebner	Joseph R. Trpik, Jr. Phil and Paula Turner	Mr. and Mrs. Frank DiJohn Mrs. Robert A. Downing	Kathryn and Bruce Johnson Scott and Marybeth Johnson	Ms. Kim Rice and Mr. Michael P. Werling
Mr. and Mrs. Gary Jones	Ms. Elizabeth K. Ware and Mr. Wally Shah	Dr. and Mrs. Sheldon Edelson Mr. Andrew Elwell	Rebecca Johnston and Jeffrey Maling	David and Kathy Riddell Mr. and Mrs. Harold D. Rider, Jr.
Mr. and Mrs. Jeff Keller	Linda and Michael Welsh The Welzer and Greisch Family	Mr. and Mrs. Bryan A. Erler Harley P. Esposito	Mr. and Mrs. Steven A. Kadish Mr. and Mrs. Matthew Kaplan	Mr. and Mrs. Harold D. Rider, Jr.
Ms. Elizabeth J. Kelly	Trudene Westerman Mr. and Mrs. Phillip Wilhelm	Marilyn D. Ezri, M.D. Mr. Kenneth Fatur and Ms. Benita Volid	Robert, Barbara and Cory Kappler	Phyllis J. Robinson Don and Julie Rocap
Margot and Josef Lakonishok	Ms. Paula D. Wise Michael and Suzanne Wychocki	Mr. Kenneth Fatur and Ms. Benita Volid	Connie and Dennis Keller Christopher Kiergan and Kristina Pauley	Renee and Edward Ross Foundation
Mr. and Mrs. Sheldon Leibowitz	Nancy and Steve Yacyshyn Candace and Ivan S. Yee	Honor and Gene Ferretti Mr. Jeffrey J. Filippelli	Christopher Kiergan and Kristina Pauley	Thomas D. and Judith F. Rutherford
Robert M. and Diane v.S. Levy	Ronald Yenerich and Will Urban	Mr. and Mrs. Peter D. Fischer Mrs. James M. Flanagan	Susan and Richard Kiphart Klingenstein Family Fund of The Denver Foundation	Mr. and Mrs. Patrick G. Ryan Ms. Roberta Schaffner
Lyon Family Foundation	Abby D. Zananini Ms. Christine M. Zrinsky	Ginny and Peter Foreman Ms. Tara Fowler and Mr. Paul H. Fricke	Ms. Rachel S. Kohler and Mr. Mark S. Hoplamazian	Mr. and Mrs. John B. Schlossberg
Barry and Mary Ann MacLean	<b>\$1,000 to \$1,999</b> Anonymous (12)	Ms. Tara Fowler and Mr. Paul H. Fricke	Mr. Mark S. Hoplamazian Gerald A. and Karen A. Kolschowsky Foundation	Susan and Gary Schuman Mr. David Scott
Sandy and Jerry Manne	Gary Abramson and Tamara Carnovsky	Eileen Fricke Mr. and Mrs. Joel M. Friedman	Gerald A. and Karen A. Kolschowsky Foundation	Kelly and Paul Seeman Patricia M. Shah-Nazaroff
Barbara and John Massey	Ada and Whitney Addington Larry and Julia Antonatos	Mr. and Mrs. Timothy D. Friedman	Mr. and Mrs. Keith R. Kretchmer	Mr. Arch W. Shaw II Louis and Nellie Sieg Fund
Hal Matthies	Mr. and Mrs. Adam M. Aron Mrs. Robert H. Bacon	Thomas and Carol Galuhn Gavin Family Foundation	Mr. and Mrs. Steven R. Lafayette	Louis and Nellie Sieg Fund Mrs. Victoria M. Skala
Mr. and Mrs. John V. N. McClure	Deborah and J. Andrew Barr Mr. William T. Bartholomay	Ms. Lisa R. Genesen and Mr. David W. Tabolt	Mrs. Grace H. Leffel Mr. Jeffrey Levick and Ms. Katherine E. Karet	Ms. Wilma J. Smelcer Mick and Sue Smith
Nancy A. McDaniel	Donna and Ed Becht Ann H. Benjamin	Ellen L. George Mr. and Mrs. Camillo A. Ghiron	Mr. Burt P. Lewis Brad and Beth Lipschultz	Mr. and Mrs. Michael Solot Mr. and Mrs. James A. Star
Stuart and Nancie Mishlove	Norma Z. Bennett Joan and Gerry Bergman	Ellen and Paul Gignilliat Mr. John C. Goodall, Jr.	Mrs. Robert R. Lipsky Mrs. Josephine P. Louis	Mr. and Mrs. Scott Stein Matthew Steinmetz
Christine and Thomas Moldauer	Mr. and Mrs. Andrew K. Block Mr. John P. Blosser	Mr. and Mrs. William M. Goodyear, Jr.	Ms. Deborah J. Lucas and Mr. Frederick Snider	Thomas W. Stephenson Mr. and Mrs. Bert O. Sullivan, Jr.
Dr. and Mrs. Howard C. Morgan	Nancy and George H. Bodeen	Mr. and Mrs. Jay R. Gottlieb Debra L. Grand	Mr. and Mrs. William M. Lyerly John and Martha Mabie	Mr. and Mrs. Bert O. Sullivan, Jr.
Linda and Dennis Myers	Matt and Christine Boler Mr. and Mrs. Edward F. Bowen	Stan and Nan Graves Sue and Melvin Gray	Drs. Mary and Scott N. MacGregor	John and Jill Svoboda Paul A. Svoboda
Lynne Considine Nieman	Mr. Keith Bowersox Christine and Paul Branstad	Mr. and Mrs. Douglas C. Grissom	Mr. and Mrs. Scott N. MacGregor	Howard and Jane Tiffen Anne and William Tobey
Mrs. Melvin A. Olshansky	Ms. Mary Lee Brinegar Jacqueline M. Brumlik	Mr. and Mrs. Dennis C. Gross Mrs. Donald E. Gross	Jo Anne Maczulski Mr. and Mrs. Richard A. Makarski	Mr. and Mrs. Richard E. Uihlein
Oppenheimer Family Foundation	Mr. Robert Buchsbaum and Ms. Elyse Klein	Mr. and Mrs. David D. Grumhaus	Mr. and Mrs. Richard A. Makarski	Mr. and Mrs. Peter E. Van Nice
Carol M. Overman	Jackie and John Bucksbaum John and Leslie Burns	Ms. Sandy M. Guettler Ms. Mary C. Hales	Mr. and Mrs. Archibald McClure	Mr. Richard H. Vlerick Mr. and Mrs. Jeffrey G. Vogelsang
Mrs. Nat P. Ozmon	Timothy Burroughs and Barbara Smith	Ms. Jeanne M. Hansen Mrs. Marguerite De Lany Hark	Courtney J. McEniry Mr. Martin J. McFadden	Dr. and Mrs. Peter Weiden Mr. and Mrs. Thomas J. Whennen
Bliss Packer and Richard Pleet	Mr. and Mrs. Carl M. Buss	Mr. and Mrs. Stephen G. Hearn	Mr. John J. Gibbons Mr. and Mrs. Peter Meder	Mr. and Mrs. Charles Wise Sarah Wolff and Joel L. Handelman
Ms. Phyllis S. Parish		Mr. and Mrs. Craig W. Henderson	Pamela G. Meyer Mr. David E. Miller	
Mr. and Mrs. Matt Pettinelli			Mr. David E. Miller Jim and Charlotte Monhart	
Pretzel and Stouffer, Chtd.			Jeffrey A. Mono, M.D.	
Ms. D. Elizabeth Price and Mr. Lou Yecies				
Mr. and Mrs. James A. Raff				
Stacy Ratner				
Norm and Edith Riley				
Ward C. Rogers Foundation				
Ms. Linda E. Salisbury				
Cynthia M. Sargent				
Stephen and Kathleen Scallan				
Mr. Michael C. Schaeffer and Ms. Michelle L. Maton				
Karen and Frank Schneider				
Mr. and Mrs. Allan P. Scholl				
Dr. Linda S. Seely				
Mr. and Mrs. Richard L. Sevcik				
Pam and Tom Sheffield				
The Shipp Family				



Dr. Lawrence Wos and  
Ms. Deserae Delsi  
Mr. and Mrs. Steven J. Young  
Mr. and Mrs. Matthew M. Zell  
Mr. and Mrs. Robert K. Zentner  
Mrs. Heather Zimmerman  
and Mr. David Gaito

**\$500 to \$999**  
Anonymous (12)  
Acadia Realty Trust  
Ms. Susan Adler  
Ms. Gina Alexander  
Sandra Jo Allen and S.  
James Perlow  
Marilynn W. Alsdorf  
Mr. and Mrs. James H.  
Anderson  
Mr. and Mrs. Nicholas H.  
Apostal  
Mr. and Mrs. S. Frank Arado  
Mr. and Mrs. Duncan B.  
Ashurst  
Mr. and Mrs. Charles A. Ault III  
Richard and Janice Bail  
Mr. David B. Baker  
Mr. and Mrs. Harold K. Baldwin  
John and Caroline Ballantine  
Adrienne Barnaby  
Mr. and Mrs. Alvin H. Bass  
Alben F. Bates and Clara G.  
Bates Foundation  
Ms. Reggie Beckman and  
Dr. Timothy N. Merrill  
Mr. Bradley Begle  
Mr. and Mrs. Francis Beninati  
The Benson Family  
Mr. and Mrs. Bruce Bentcover  
Mr. and Mrs. Kelley A.  
Bergstrom  
Mr. and Mrs. Larry Berkow  
Judith and Philip D. Block III  
Mr. and Mrs. Steve P. Blonder  
Ms. Alison Hefele Bonney  
Nancy Boyd  
Ms. April K. Brazell and  
Mr. Donald J. Santoski  
Mrs. Theresa B. Bricker  
Mr. and Mrs. John A. Bross  
Brown-Monson Foundation  
Mr. and Mrs. R. Jeff Bruce  
Mr. Mark Buechler  
Steve Byrne and Kerry  
Shannon  
Mr. Phillip L. Cacioppo  
Mr. and Mrs. Louis P. Cain  
Mr. and Mrs. Matthew  
Campbell  
David and Jane Casper  
Mr. and Mrs. Philip J. Cavatoni  
Chicago Sports Monster  
Ms. Chris Christian and  
Ms. Catherine Gaffney  
The Arthur E. Clamage Family  
Mrs. Thomas C. Clark  
Mr. and Mrs. Michael T. Clune  
Rebecca M. Coleman  
Dr. Jason Comer  
Mr. and Mrs. Christopher G.  
Cook

Ms. Sarah L. Corbin and  
Mr. Paul R. Steuer  
Dan and Mary Beth Cox  
Ms. Donna M. Curtis  
Ms. Liese A. Dallbauman  
Miss Christina A. Davis  
Ms. Diana DeBoy  
Mr. Jonathan E. Dedmon  
Ms. Judith M. Desenis and  
Mr. Scott Peterson  
Mary E. Devine  
Mr. John H. Dick  
Dr. J. A. Dillon, D.V.M.  
Ms. Cynthia L. Doloughty  
Mrs. Diane Donald  
Shawn M. Donnelley and  
Christopher M. Kelly  
Mrs. Gwen Dragutinovich  
Raymond Drymalski  
Rick and Karen Duffy  
Miss Elizabeth Dukes  
Mr. and Mrs. Harvey S. Dulin  
Ms. Carol P. Eastin  
Linda L. Egebrecht  
Erika Erich  
Fabio and Gemma Fabbri  
Mr. Tarek Fadel  
Fadem Family Foundation  
John and Geraldine Fiedler  
Ms. Linda Fifield  
Ms. Melissa Lain-Finch and  
Mr. Robert Finch  
Linda M. Finland  
Foley Family Foundation  
Arthur L. Frank, M.D.  
Rhoda L. and Henry S. Frank  
John and Cathy Freechack  
Joanne Benazzi Friedland  
Mr. and Mrs. Philip M.  
Friedmann  
Susan and Sy Frolichstein  
Florence Gabbard  
Kathryn C. Gamble, D.V.M.  
Mr. Larry A. Gansho  
Mr. and Mrs. Thomas Gariti  
Terri and Stephen Geifman  
Ms. Julie L. Gentes  
Mr. and Mrs. Thomas  
James Gerstner  
Dave and Anne Gezon  
Mr. and Mrs. Aaron Gibson  
Elizabeth Gillette and  
David Lively  
Joseph B. Glossberg  
Foundation  
Mr. and Mrs. Duncan L.  
Goldie-Morrison  
Mr. Samuel Goodman  
The Grainger Family  
Ms. Chandra A. Greer and  
Dr. Steven J. Moravec  
Margaret E. Grinnell  
Barb and Glenn Grossklags  
Brenda and John Gude  
The Hackney Family  
Mr. Todd Hamilton  
Margaret H. Hanlon  
Ms. Pamela M. Hanratty and  
Mr. Jeffrey Coburn  
Alice Harper

The Hass Family  
Mr. and Mrs. Eugene Heal  
Mr. and Mrs. Arnette Heintze  
Mrs. Lesli K. Henderson and  
Mr. Steven R. Goldman  
John and Kathleen Hill  
Mr. and Mrs. John L. Hogan  
Elizabeth B. Hood  
Ms. Greta Huizenga  
Mr. Thomas J. Hulseman  
Mr. and Mrs. Harry I. Hunter  
Patricia J. Hurley  
Robert and Saran Hutchins  
Verne and Judy Istock  
Dr. Kenneth James  
Thor and Darlene Jondahl  
Mr. and Mrs. Irv Kagan  
Mr. and Mrs. John D. Kann  
Ms. Stephanie Kanter  
Mrs. Mary Ann Karris  
Mr. E.J. Karsten  
Anil Kashyap and  
Katie Merrell  
Ms. Faye Katt and  
Mr. Ganesh Natarajan  
Heidi and Ed Keenan  
Ms. Kathleen A. Kelley  
Melissa and Dennis Kelly  
Mr. and Mrs. Tom Kichler  
Mr. and Mrs. William Kies  
Ms. Anne C. Kim  
Mr. David Kimball  
Sylvia and John Kinney  
Ms. Tina M. Koegel and  
Mr. Ron Vesely  
Erika Kohler and  
Timothy Dillon  
Amy Kontrick and  
Mark Mycyk  
Mr. Amit Koren  
Lottie Kowalski  
Sarah Koz and James  
Freeman-Hargis  
Ms. Wendy I. Krimins  
Ms. Elizabeth Krog and  
Mr. Jeffery A. Tongue  
Mr. and Mrs. Ronald J. Kron  
Dr. Robert A. Kubicka and  
Dr. Claire Smith  
Mr. and Mrs. Ivan Kushen  
Mark Landolt and Jennifer  
Lane Landolt  
Mrs. Katie Lane  
Mr. Richard Lanyon  
Mr. and Mrs. Craig Lashmet  
Edward and Anne Laumann  
Dr. John G. Lease  
Ms. Ruth W. Lekan  
Mr. and Mrs. Alexander R.  
Lerner  
Mr. and Mrs. Leon M. Levy  
Donald Lewis and  
Nancy Jo Lewis  
Mr. Graham D. Lewis and  
Dr. Elizabeth C. Powell  
Mr. and Mrs. Robert B. Lifton  
Tadd and Dana Lindsay  
Mr. and Mrs. John H. Long  
Longfellow Elementary  
School

Jim and SuAnne Lopata  
Ms. Margaret L. Maczulski  
Ms. Gigi Mahon  
Mr. Paul W. Makray, Jr.  
Mr. and Mrs. Joseph Malfitano  
Ms. Holly Malkasian-  
Stalder  
Mr. and Mrs. Barry A. Malkin  
Joanna Mallers  
Mr. Joseph M. Manzella and  
Ms. Ashley Gold  
Dr. Elizabeth A. Marcus and  
Mr. Ira J. Belcove  
Natasha Matza  
Mrs. Beatrice C. Mayer  
Greg and Heidi Mayer  
Betsy McCormick and  
Steven Lelyveld, M.D.  
Mr. Andrew W. McGhee  
Mr. Thomas W. McGrath  
Ms. Molly McShane and  
Mr. George Schaefer  
Laura L. Metzger  
Jean and Robert Meyers  
Mr. and Mrs. Stephen W.  
Micatka  
The Mohn Family  
Bev and Dick Moody  
Jacqueline J. Moriarty and  
Benjamin A. Maki  
Mr. and Mrs. Robert J. Morris  
Kerry and Gloria Morrissey  
Mr. John Murphy  
Mike and Jane Murray  
Ms. Mary Nalbandian  
Jon and Kathy Newcomb  
Alexandra and John Nichols  
Albert and Nancy Niemi  
Mr. and Mrs. Thomas Norton  
Mr. and Mrs. Edward U. Notz  
Ms. Kathleen Nowlin  
Mr. and Mrs. Adam Ochstein  
Ms. Meghan M. O'Donnell  
Mrs. Molly O'Keefe  
Barbara Okleshen  
Mr. and Mrs. Peyton H.  
Owen, Jr.  
William and Susan Pappas  
Mr. David S. Parkes  
Mr. James D. Parsons  
Bob and Carol Passaneau  
Mr. and Mrs. Norman J.  
Patinkin  
Mr. John C. Pelletiere  
Laura Permesang and  
Todd Turner  
Karla D. Petersen  
Ms. Martha A. Peterson and  
Mr. Andrew H. Shaw  
Mr. and Mrs. Richard C.  
Peterson  
Mari Philipsborn and  
Eric Terman  
Mr. and Mrs. Michael P. Pichla  
Mr. Michael J. Pifko  
Kirk Pion and Peggy Brink  
Andy Pittler  
The Tim Pohl Family  
Mr. and Mrs. David Polayes  
Ms. Stephanie Polito

Ms. Bronwyn T. Poole and  
Mr. Peter G. Schmitz  
Dr. and Mrs. William Porter  
Dianne Goren Radtke and  
Steven Radtke  
Mr. and Mrs. Brent P. Ray  
Mrs. John Shedd Reed  
Ms. Shirley R. Reed  
Dr. Anne Grall Reichel and  
Mr. Jack Reichel  
Chuck and Cathy Reiter  
Remington Goldberg Family  
Mr. and Mrs. William G.  
Reyner  
Mr. and Mrs. Grant Rice  
Mr. and Mrs. Robert Richardson  
Jill and Ron Rohde  
Natalie and Matt Rosenberg  
Megan Ross, Ph.D. and  
Stephen Ross, Ph.D.  
Ms. Rita Ryan  
Ms. Emily Sachs-Wong and  
Mr. Thaddeus Wong  
Mr. Richard H. Sanders  
Ms. Lili Hall Scarpa  
Peter and Alice Schaff  
Mr. and Mrs. Joel Schaffer  
Herb and Renée Schneider  
Mr. and Mrs. Paul W.  
Schroeder  
Mr. and Mrs. Charles F.  
Schwake  
Mr. and Mrs. Charles P.  
Schwartz, Jr.  
Mr. and Mrs. Irving Seaman, Jr.  
Gloria and Bill Sedlacek  
Ms. Sheryl Seger  
Mr. and Mrs. Richard J. L.  
Senior  
Mr. Kalpesh Shah and  
Ms. Deepti Singh  
Mary Beth Shea  
Mr. and Mrs. Jerrold Sheer  
Mr. and Mrs. John Slowinski  
Mr. and Mrs. Charles F. Small  
Christina and Robert Smolen  
Peggy Snorf  
Mr. and Mrs. Patrick J. Songer  
Mr. David Spadafora  
Ms. Jennifer Statler  
Nikki and Fred Stein  
Ms. Virginia Stephen  
Phillip and Leslie Stern  
Liz Stiffel  
Mrs. Louise A. Stone  
Mr. and Mrs. Alden Sulger  
Mr. and Mrs. Calvin D.  
Swartzentruber  
Mr. and Mrs. Nathan B. Swift  
Mr. Robert J. Sypniewski  
Ms. Mary A. Taft  
Mike and Leslie Taylor  
Mr. and Mrs. Michael  
Tenharmself  
Mr. and Mrs. Josh Thimons  
Mr. and Mrs. Nick Thomas  
Dr. Henry J. Thompson  
Dr. Jeffrey M. Tilkin and  
Ms. Diep Vuong



Jennifer and Barton  
Tretheway  
Mr. and Mrs. Charles A.  
Tribbett III  
Adam Tumas, Jr.  
Paul and Judith Tuszynski  
Mr. and Mrs. Edward  
Keith Uhlir  
Ellen and Jerry Upton  
Ms. Elsa Vaintzettel  
Mr. and Mrs. Michael Walsh  
Oliver Walsh  
Sandra and Bruce Wechsler  
Mr. Drew Weightman  
David Weiner and Patricia  
Reynolds  
Steve and Lorraine Weiss  
Ramona L. Welker  
Mr. Daniel M. Wenc  
Barbara West  
Florence Wheeler  
Barbara and Steven Wolf  
Eric and Dorothy Wolff  
Susan and Michael Wolz  
Mr. and Mrs. Kenneth A.  
Wright III  
Mary A. Young  
Robert W. Zeller  
Mr. Aldo C. Zucaro

**\$365 to \$499**  
Anonymous (7)  
Mr. and Mrs. Walid  
Abu-Ghazaleh  
Mrs. Kathleen Acevedo  
Mr. John Agaciak  
Mr. and Mrs. Matthew  
R. A'Hearn  
Dr. Farida Ahmed, M.D.  
Mr. and Mrs. Jeff Aldridge  
Mr. and Mrs. Gary R. Allie  
Peter B. Allport  
Mr. and Mrs. Jay A. Alter  
Mr. John E. Alvarez and  
Ms. Kimberly Anderson  
Ms. Danika Amusin  
Mr. Joseph Antonini  
Mr. and Mrs. Andrew Arkin  
Allison Bacon  
Mr. Vaseem Baig  
Mrs. Laura Baker  
Mr. and Mrs. Greg Ball  
Mr. Robert Barrett and  
Ms. Colleen Cassell  
Mrs. Kimberly A. Barry  
Ms. Erin P. Bartholomy and  
Mr. David C. Birks  
Mr. Joseph Basic  
Mr. and Mrs. William Billows  
Mr. and Mrs. Steve S. Birchard  
Michael and Diane Blake  
Mr. and Mrs. Andrew Bloomer  
Mr. and Mrs. Fred P.  
Bosselman  
Noelle C. Brock  
Mr. and Mrs. Mark Brown  
Mr. and Mrs. Scott T. Bullard  
Mr. and Mrs. John Burke  
Michelle and Kevin Cahoon  
Edward J. Calkins

Mr. Robert F. Callbeck  
Mrs. Frances M. Cameron  
Mr. Nick D. Campanario and  
Mrs. Noah Cooper  
Mr. and Mrs. Michael Cannon  
Mr. Miguel A. Casadas  
Mr. Michael G. Casale  
Mr. and Mrs. John M. Casper  
Mr. Ken Challand  
Susan Chernoff  
Mr. and Mrs. Norm Cherrett  
Mrs. Dawn M. Chychula  
Dr. Magda Cilella and  
Mr. Salvatore G. Cilella  
Mr. John Cipollini  
Carol Cleave  
Mr. Clay Cochran  
Mr. Robert B. Cole  
Patrick Collins and  
Dr. Helena Gabriel  
Mr. and Mrs. Timothy S. Conlin  
Marla and Donald Coquillette  
Mr. and Mrs. David Corken  
Mr. and Mrs. Andrew Cupps  
Mr. Dan Daly and  
Ms. Randi Whitman  
Michael Danforth and  
Eva Nielsen  
Mr. and Mrs. Andrew  
Demopoulos  
Ms. Ingrid Deroubaix and  
Mr. Michael J. von Bodman  
Mr. and Mrs. Brian J.  
Dettmann  
Leonora Dickson  
Ms. Roberta S. Dillon  
Mr. Ernest Dittmann  
Dr. Cathleen Dohrn and  
Mr. Matthew Benoit  
Ms. Ann P. Duffy  
Mr. Joseph and Mrs. Kathleen  
Dunigan  
Ms. Judy Eastridge  
Ms. Stacey R. Empson and  
Mr. Eric Ruderman  
Ms. Sharon Ephraim and  
Mr. David W. Kite  
Mr. and Mrs. John Esterly  
Mr. Allan R. Ettinger and  
Mrs. Shannon Ettinger  
Mr. and Mrs. William A. Eyre  
Dr. and Mrs. Daniel C. Fabiano  
Mr. Brian Fairchild  
Mr. and Mrs. Dennis Forgue  
Mr. and Mrs. Chris Freeburg  
Mr. and Mrs. Carl T. Fulkerson  
Mr. and Mrs. Christopher L.  
Fullerton  
Mr. John F. Fyfe and  
Mrs. Joan Greco  
J. Patrick and Anne M.  
Gallagher  
Mr. and Mrs. Paul Gamboa  
Mr. and Mrs. Frank M. Gasior  
Ms. Barbara J. Geist  
Dr. and Mrs. Mark Gentleman  
Mr. and Mrs. Frederick W.  
Glure  
Tony and Katie Gnau  
Dr. Lori A. Goodhartz

Mr. and Mrs. David B. Gookin  
Mr. Brian Gould  
Ms. Marianne Grabowski and  
Mr. Vincent E. Hillery  
Mr. and Mrs. Ted Graf  
Linda D. and Craig C.  
Grannon  
Ms. Sally Greco  
Thomas Grosspietsch  
Mr. and Mrs. Eric Ha  
Mr. Don Haerr  
Holley Hall  
Mr. and Mrs. Mark L. Hanover  
The Harold Family  
Mr. and Mrs. Harp Harper  
Ms. Julianne M. Hartzell  
Chris Hastings  
Ms. Joyce K. Herdiska  
Mr. James B. Hill II and  
Ms. Lisa Panzeca  
Mrs. Genevieve Hillis and  
Mr. Brian Kocinski  
Richard and Joyce Hirsch  
Kimberly Hoang  
Dr. and Mrs. Richard A. Hogan  
Ms. Dana M. Hokin  
Mr. and Mrs. Michael S.  
Hortatso  
Mr. Kenneth A. Hsu  
Cheri and Tom Hubbard  
Ms. Claudia C. Hueser  
Monica and William Hughson  
Mr. and Mrs. Christopher A.  
Hultquist  
Mr. Jeff Husserl and Ms.  
Valerie Ware  
Mr. and Mrs. Jay M. Jaffe  
Ed and Holly Jamison  
Mr. and Mrs. Kevin M. Jelinek  
Mr. Thomas M. Jennings  
Mr. Matthew W. Jewell  
Mr. and Mrs. Henry T. Johanet  
Mr. and Mrs. Craig S. Johnson  
Mr. Steven C. Johnson and  
Ms. Katrina Wittcamp  
Mr. Terry D. Johnson and  
Mrs. Alison Sparks Johnson  
Mrs. Colleen Jones  
Mr. Scott Jones and  
Dr. Jennifer Pope  
Kathleen T. Jordan  
Mr. and Mrs. Avi Josefson  
Cynthia Kalk  
Mr. and Mrs. Howard  
Kambara  
Mr. and Mrs. J. Bradley Keck  
Ms. Denise A. Kelley  
Mr. and Mrs. Gaynor N. Kelley  
Mrs. Robert and Yuri Kern  
Mr. and Mrs. Thomas L.  
Kittle-Kamp  
Mr. and Mrs. Mark A. Kmety  
Mr. David Knapp  
Brett and Alicia Kreisman  
Mr. Stephen Kriegel  
Ronald La Voie  
James and Paula Ladwig  
Ms. Angelika Lang  
Dr. and Mrs. Gordon R. Lang

Mr. and Mrs. Robert K.  
Larsen  
Mr. and Mrs. Frank F. Laskero  
Ms. Julie Latsko  
Mrs. Maureen C. Lesak  
Mr. and Mrs. Eric B. Lev  
Ms. Benita T. Levy  
Mr. Jacob Levy  
Mr. Christopher Loehman  
Ms. Marie A. Lona  
Mrs. Sarah Lovinggood  
Kelley H. Lynch  
Mr. Dave Malecek  
Elaine and Floyd Manilow  
Mr. and Mrs. James G. Manz  
Michael Marek  
Mr. Jeremy K. Marmer and  
Ms. Sivakami Thayu  
Mrs. Juanita Marsden  
Mr. Raymond McBride  
Mr. and Mrs. Gary McCabe  
Mr. James McCormick  
Linda and Ed McGlynn  
Carrie McNally and  
Rick Maechling  
Mr. and Mrs. James R. Meindl  
George and Gerry Messenger  
Tom and Cathy Meyers  
Alex and Pat Mihalec  
Ms. Laura Miller and  
Mr. Brian Schneider  
J. W. Mitchell  
Mr. and Mrs. James J. Moller  
Mr. Lars M. Montag  
Mr. and Mrs. Raymond E.  
Muffler  
Mr. Gary A. Muhr  
Mr. and Mrs. David Mui  
Mr. and Mrs. Matthew J.  
Murer  
The Muro Family  
Dr. Christena Nippert-Eng  
Ms. Martha C. Nussbaum  
Michael J. O'Brien  
Ms. Kimberly Orput and Mr.  
Steven L. Van der Zanden  
Mr. Richard Orsan  
Mr. and Mrs. Peter Pace  
Mr. and Mrs. Joseph M.  
Panepinto  
Mr. and Mrs. William Pate  
Ms. Doris J. Patitz  
Audrey and John Paton  
Ms. Mary L. Paton and  
Mr. Randall Kurzman  
Frank and Kristin Pellicori  
Mrs. Maureen Pendry  
Dr. and Mrs. Robert Perlman  
Mr. and Mrs. Donald R. Peters  
Troy and Amy Peters  
Dr. William K. Platt  
Mrs. Susan Pope  
Paul and Anne Poy  
Bud Pruiim  
Dr. and Mrs. H. Jay Przybylo  
Mr. James Quinn and  
Ms. Lynette Coyne  
Mr. and Mrs. Mark A. Ratner  
Mr. Raj Ray  
Ms. Jamie L. Reifman

Mr. and Mrs. Tom Rhomberg  
Ms. Dorothy R. Richards  
Mr. Mark Richman  
Mr. and Mrs. Robert E.  
Rickett II  
Benjamin and Barbara Rooks  
Laurie and Scott Rose  
Dr. Steven Rosen  
Mr. and Mrs. Harold Rosenson  
Mr. Edgar Rubio  
Geoffrey and Koreen A. Ryan  
The Sahakian - Deth Family  
Liz Saltzman  
Sanchez Family  
Mrs. Mary Lou Sarmiento  
Mr. and Mrs. John Scala  
Robin Schapiro  
Mr. Kenneth Joseph  
Schenatzki  
Mrs. Dawn Schnabel  
Mr. Dugan Schwalm  
Mrs. Mary A. Schwartz and  
Mr. Richard H. Brewer  
Neena B. Schwartz  
Mr. and Mrs. Thomas M. Scott  
Judith and John Shear  
Jeanine M. Sheehan  
The Shein/Snellback Family  
Mark and Nikki Shields  
Brittany and Michael Siciliano  
Mrs. Larissa Silberberg  
Nancy Briscoe Silverman  
Mr. and Mrs. Craig A. Simon  
K.C. and Carl Simon  
Mr. and Mrs. William J. Smilie  
Mrs. Jennifer Smith  
Craig Sokol  
Ms. Michelle Solodyna  
Mr. and Mrs. Frank  
Sommese III  
Dr. Stephen E. Soppet  
Mr. James J. Soreng, Jr.  
Mr. Gus S. Stamatakos and  
Ms. Nancy Laho  
Ms. Emmy Stanley  
Mr. and Mrs. Frederic Starr  
L. J. Stevens  
Mr. and Mrs. Adam Stewart  
Philip A. Stillitano  
Mr. and Mrs. John Supera  
Robert and Christine  
Szafranec  
Ms. Teresa Tambolas and  
Mr. Eric Rampson  
Mrs. Kimberly Tharin  
Mr. and Mrs. Gavin Tierney  
Mr. Brian Toba and  
Ms. Sarah Remijan  
Ms. Kathleen Tobin  
Barry and Linda Ullman  
Mary Van De Walle and  
Colin Gildea  
Mr. and Mrs. David C.  
Van Dyke  
Mr. and Mrs. Carl Vespa  
Mr. and Mrs. Alexander Viana  
The Vijaya and Navile  
Families  
Mr. and Mrs. Robert J. Wagner  
Ms. Lisa Waldron



Mr. and Mrs. Garry Walters  
Vicki and Kurt Warning  
Ms. Mary Agnes Welsh  
Jason, Katy and Lucas  
Wendt  
Mr. and Mrs. Stephen D.  
Williamson  
Mr. and Mrs. Peter S. Willmott  
Tom Wiltzius and  
Patricia O'Donnell  
Carolyn J. Winje and  
Michael Kravitz  
Mr. Andrew Wong and  
Ms. Tina Nguyen  
John L. Wren  
Mr. Lawrence R. Yablonicky  
Anthony, Andrew, Lisa and  
Ted Yaghamour  
Mark and Barbara Yeager  
The Yearley Family  
Ms. Doyoung Yong and  
Mr. Jason W. Strahan  
Mr. Kenneth A. Youga  
Russ and Joan Zajtchuk  
Mr. and Ms. Bruce Ziegler  
Mr. and Mrs. Michael Zoller

**CORPORATIONS**  
**\$10,000 and above**

Anonymous (1)  
ArcelorMittal  
Baxter International Inc.  
Goldman Sachs & Co.  
Illinois Tool Works  
S & C Electric Company  
UGL Services

**\$5,000 to \$9,999**

Andrew Corporation, LLC  
General Iron Industries, Inc.  
Pepper Family Foundation  
William Blair & Company  
Foundation

**\$2,500 to \$4,999**

EarthShare of Illinois  
Plante Moran  
Robert Bosch Tool  
Corporation  
Shure Incorporated

**\$1,000 to \$2,499**

A. M. Castle & Co.  
AMSTED Industries  
Foundation  
GKN Foundation  
Old Republic International  
Corporation  
Sahara Enterprises, Inc.

**FOUNDATIONS**

**\$100,000 and above**

The John D. and Catherine T.  
MacArthur Foundation

**\$50,000 to \$99,999**

The Brinson Foundation  
Helen Brach Foundation

**\$25,000 to \$49,999**

The Buchanan Family  
Foundation  
John R. Halligan Charitable  
Fund

**\$10,000 to \$24,999**

Chauncey and Marion D.  
McCormick Family  
Foundation  
Edmond and Alice Opler  
Foundation  
Makray Family Foundation

**\$5,000 to \$9,999**

D & R Fund  
Fred J. Brunner Foundation  
Jack and Goldie Wolfe Miller  
Fund  
The Siragusa Foundation

**\$2,500 to \$4,999**

Morgan Stanley Foundation  
Walter and Caroline Sueske  
Charitable Trust

**CORPORATE AND  
FOUNDATION  
MATCHING GIFTS**

Anonymous (1)  
Allstate Giving Campaign  
Aon Foundation  
ArcelorMittal Matching Gifts  
Program  
Bank of America Foundation  
Baxter International  
Foundation  
BDT Capital Partners, LLC  
Beam Global Spirits & Wine,  
Inc.  
CA Technologies, Inc.  
Chicago Tribune Foundation  
CNA Foundation  
Dell Inc.  
Deutsche Bank Americas  
Foundation  
Driehaus Capital  
Management, Inc.  
ExxonMobil Foundation  
FM Global Foundation  
Fortress Investment Group  
GE Foundation  
Give With Liberty  
Goldman Sachs & Co.  
Google  
Harbor Capital Advisors  
HSBC - North America  
Illinois Tool Works  
Foundation  
International Business  
Machines  
Johnson & Johnson  
JPMorgan Chase Foundation  
Kirkland & Ellis Foundation

Leo Burnett Company  
Charitable Foundation  
Madison Dearborn Partners  
Merck Partnership for Giving,  
Matching Gifts  
Microsoft Corporation  
Motorola Mobility Foundation  
The Northern Trust Company  
NYSE Euronext Foundation  
Pepsico Foundation  
The Pfizer Foundation  
Polk Bros. Foundation  
Robert R. McCormick  
Foundation  
UBS  
W. W. Grainger, Inc.  
Walt Disney Company  
Foundation  
Warranty Group  
Winston & Strawn LLP

**SPECIAL PROJECT GIFTS**

We recognize contributors  
directing gifts to specific pro-  
grams at the zoo and abroad.

**INDIVIDUALS**

**\$1,000,000 and above**

Emily and John Alexander  
Hurvis Charitable Foundation  
The Regenstein Foundation  
Walter Family Foundation, Inc.

**\$500,000 to \$999,999**

Estate of Charles C.  
Haffner III  
The Segal Family Foundation

**\$250,000 to \$499,999**

David P. Bolger  
Stephanie and John Harris

**\$100,000 to \$249,999**

Francesca and John  
Edwardson  
Sharon Karsten and  
Frank Malone  
Rose L. Shure

**\$50,000 to \$99,999**

Anonymous (1)  
Mr. Duncan Alexander and  
Ms. Katharine A. Keane  
Mr. and Mrs. Thomas S.  
Alexander  
Mr. and Mrs. Walter Alexander  
Mr. Robert D. Rodgers\*

**\$25,000 to \$49,999**

Mrs. Katharine C. Gross  
John Caldwell Meeker Family  
Susan and David Sherman

**\$10,000 to \$24,999**

Anonymous (1)  
Mr. and Mrs. Bill Cummings  
John Hart and Carol Prins  
Stephen L. Hickman Family  
Foundation

Ms. Tracy Hickman and  
Mr. Chad Munger  
Robert J. Horton and  
James C. Perry  
Mr. and Mrs. Timothy R.  
Mullen  
Dr. and Mrs. William Porter  
Mr. Kenneth N. Traisman

**\$5,000 to \$9,999**

Anonymous (1)  
Marilyn D. Ezri, M.D.  
Mary and Bruce Feay  
Jonathan Kovler/The Kovler  
Family Foundation  
Susan Regenstein and  
Barry Frank

**\$2,500 to \$4,999**

Sue and Jim Colletti  
Dr. Vered Hankin Kaufman  
and Mr. Jeremy Kaufman  
Ms. Suzanne Krohn and  
Mr. John D. Edelman  
Nancy A. McDaniel  
Mrs. Ann Meeker Ryan and  
Mr. Steven M. Ryan  
Carole and Gordon Segal

**\$1,000 to \$2,499**

Dr. and Mrs. Marc S.  
Feldstein  
Mrs. Henry G. Hart, Jr.  
Mr. and Mrs. Gerald Kaufman  
Ms. Katherine Tomford

**CORPORATIONS**

**\$50,000 and above**

Deere and Co.

**\$10,000 to \$49,999**

Banfield Pet Hospital

**\$5,000 to \$9,999**

Little Gems International

**FOUNDATIONS**

**\$100,000 and above**

Association of Zoos &  
Aquariums

**\$50,000 to \$99,999**

Arcus Foundation  
Bank of America Foundation  
JPMorgan Chase Foundation  
Polk Bros. Foundation

**\$25,000 to \$49,999**

Anonymous (1)  
Daniel F. and Ada L. Rice  
Foundation  
Grant Healthcare Foundation  
Quest Foundation  
Washington State University

**\$10,000 to \$24,999**

The Albert Pick, Jr. Fund  
Bowman C. Lingle Trust  
Dr. Scholl Foundation  
The Field Foundation  
of Illinois, Inc.  
Otho S. A. Sprague  
Memorial Institute

**\$5,000 to \$9,999**

Cleveland Metroparks  
The Elizabeth Morse  
Charitable Trust  
University of Illinois

**\$2,500 to \$4,999**

American Conifer Society  
Ape Conservation Effort  
Franklin & Marshall College  
Minnesota Zoo Foundation

**\$1,000 to \$2,499**

Detroit Zoological Society  
Harry F. Chaddick and  
Elaine M. Chaddick  
Foundation Inc.  
The Maryland Zoo  
in Baltimore

**\$300 to \$999**

North American Bluebird  
Society  
Endangered Species  
Print Project  
Zebra Foundation for  
Veterinary Zoological  
Education

**GOVERNMENT**

Illinois Department of  
Natural Resources  
Lake County Forest  
Preserve District  
U.S. Department of  
Agriculture  
U.S. Fish & Wildlife Service

**EVENT SPONSORS**

We recognize the sponsors  
of Lincoln Park Zoo's numer-  
ous special events.

**\$100,000 and above**

Charter One  
ComEd, An Exelon Company

**\$50,000 to \$99,999**

Pepsi Beverages Company

**\$25,000 to \$49,999**

Joe & Ross  
Lifeway Foods, Inc.  
MINI of Chicago  
United Airlines



**\$10,000 to \$24,999**

ArcelorMittal  
Midwest Foods  
New Balance Chicago  
Vienna Sausage  
Manufacturing Co.  
Walgreen Co.

**\$5,000 to \$9,999**

Clif Bar & Company

**\$1,000 to \$4,999**

Crop to Cup  
J & J Snack Foods  
Corporation  
Sweet Leaf Tea Co.  
Qdoba

**WOMEN'S BOARD EVENTS SPONSORS, DONORS AND FRIENDS****\$100,000 and above**

Guggenheim Partners, LLC

**\$25,000 to \$99,999**

J.N. Pritzker/Tawani  
Foundation/Pritzker  
Military Library

**\$10,000 to \$24,999**

BMW of North America  
Mr. and Mrs. Patrick G. Ryan  
Sentient Jet, LLC

**\$5,000 to \$9,999**

Apollo Group, Inc.  
Mr. and Mrs. John B. Harris  
Mr. and Mrs. William Krehbiel

**\$2,500 to \$4,999**

Anonymous (1)  
The Cozad Family Foundation  
Mr. and Mrs. S. Matthews V.  
Hamilton  
Jay and Gretchen Jordan  
The Middleby Corporation

**\$1,000 to \$2,499**

Martin and Debra Beck  
Mr. and Mrs. Michael S.  
Canmann  
Marcia S. Cohn  
Jamee C. Field  
Mrs. James M. Flanagan  
Greater Horizons  
Mr. Judd Malkin and  
The Malkin Family  
Mr. and Mrs. Jason H. Mersey  
Mr. and Mrs. John F. Siff  
Ms. Abby D. Zanarini

**ZOO BALL 2012 PREMIUM TABLE PURCHASERS****Grand Patrons**

Emily and John Alexander

**Grand Benefactors**

Abbott Nutrition  
Allstate Insurance Company  
ComEd and Anne  
Pramaggiore  
Marcia and Dave Knuepfer  
Make It Better

**Benefactors**

Ameresco, Inc.  
Bank of America  
Ann and Blake Benjamin (2)  
BMO Capital Markets  
The Bonner Family  
Chopper Trading, LLC  
Credit Suisse  
Deborah and Bruce Crown  
Ernst & Young  
In Honor of Ann Gerber and  
Bernie Kaplan (2)  
The Northern Trust Company  
Cynthia and David Polayes  
Mr. and Mrs. Patrick G. Ryan  
UGL Services - Unicco  
Operations  
John Ettelson -  
William Blair & Company  
Abby D. Zanarini

**Guarantors**

Apollo Group, Inc.  
Blue Cross Blue Shield  
of Illinois  
The Boeing Company  
Eckhardt Trading Company (2)  
Foley & Lardner LLP  
Goldman, Sachs & Co.  
Guggenheim Partners, LLC (8)  
Bill and Barbara Higgins  
JPMorgan Chase  
Leo Burnett (2)  
United Scrap Metal, Inc.

**Women's Board****Guarantors**

Katherine and Kirk Baldwin  
Mr. and Mrs. Matthew  
Campbell/Mr. and  
Mrs. William Kies  
Dr. Karen S. Eisenbart and  
Mr. Thomas R. Eisenbart  
Mr. and Mrs. Kevin F. Flynn  
The Law Offices of Peter  
Francis Geraci  
Brent and Katie Gledhill  
Mr. and Mrs. Jay R.  
Gottlieb/Drs. Mary and  
Scott N. MacGregor  
Caroline and Charlie Huebner  
Mr. and Mrs. Peter F. Meder  
Kathleen K. Nowlin

Mr. and Mrs. Steven M.  
Theiss/Mr. and Mrs.  
Brian J. White  
Mr. and Mrs. Mark R. Walter  
Dr. and Mrs. Peter J. Weiden

**WOMEN'S BOARD EVENTS IN-KIND DONORS**

Anonymous (1)  
The Absolut Company  
Abt Electronics and  
Appliances  
Allstate Insurance Company  
Mr. and Mrs. James H.  
Anderson  
Alice and Francis Beninati  
Ann and Blake Benjamin  
Rhonda Buss  
Bridget and Matthew  
Campbell  
The Casino  
Chicago Kickbox, Inc.  
Clear Channel Media and  
Entertainment - Chicago  
Curtain Bluff Resort  
Cindy and Craig Curtis  
Davis Imperial Cleaners  
DLA Piper, LLP (US)  
Susan and Bryan Erler  
Escada  
Event Creative  
The Four Seasons Hotel  
Chicago  
Frost Lighting  
Garrett Popcorn Shops  
Giorgio Armani  
Graff Diamonds  
Guggenheim Partners, LLC  
The Heartland Spa  
Holly Hunt  
Holtzmann's  
Ippolita  
J&L Catering  
Carolyn I. Jacob, M.D.  
John Reilly Photography  
John S. Swift Co., Inc.  
Lakeshore Express Aviation  
Marcus Lemonis and  
Beth Levine  
Make It Better  
Marshall Pierce & Company  
Maruba Resort Jungle Spa,  
Belize  
Taylor Miller, Holistic  
Health Clinic  
MORE  
Susan and Christopher  
Mundy  
Neiman Marcus  
Michigan Avenue  
Northwestern Executive  
Health  
Partytime/HDO Productions  
Paul Stuart, Inc.  
Pepsi Beverages Company  
Pinkberry, Inc.  
PNC Bank  
Ralph Lauren

Rendezvous Music  
Roberto Coin  
Salvatore Ferragamo  
Sidney Garber  
Skirt PR  
Frances Swerdlow  
Melinda and Nathan Swift  
United Airlines  
W.T. Oki Motors, Inc./DBA  
City Scooters  
Trudy Westerman  
Windy City Linen

**AUXILIARY BOARD EVENTS SPONSORS, DONORS AND FRIENDS****\$10,000 and above**

U.S. Bancorp Foundation

**\$5,000 to \$9,999**

Chicago Dental Society

**\$2,500 to \$4,999**

Fannie May  
Lifeway Foods, Inc.  
Locke Lord Bissell & Liddell  
LLP  
Jodi and Gray McNally  
Gift of the Ringer Family

**\$1,000 to \$2,499**

Allstate Insurance Company  
Chicago Apartment Finders  
Edward McNally  
Charitable Foundation  
Mr. and Mrs. Thomas P.  
Kearney  
Jack Links  
Mr. and Mrs. William M. Lyerly  
Navigant Consulting -  
Lending A Hand  
The Sidley Austin Foundation  
Twin Trees Foundation

**AUXILIARY BOARD EVENTS IN-KIND DONORS**

Akira  
Argo Tea  
Beavers Coffee + Donuts  
Bulgari  
Cantina Laredo  
Chicago Dental Society  
Chicago Social Magazine  
Crest  
Einstein Bros. Bagels  
Equinox - 900 North  
Michigan Avenue  
Fannie May  
Ferrara Pan Candy  
Company, Inc.  
The Flower Firm  
Francesca's  
Frontier  
GT Fish & Oyster  
Jelly Belly Candy Company  
Mercadito

MillerCoors  
Moller Financial Services  
MORE  
Oral B  
Pepsi Beverages Company  
RJ Grunts  
Rockit Ranch Productions  
Scholastic  
Spiaggia  
Storck USA  
Sunda New Asian  
Tavern on Rush  
United Airlines  
Van Duzer Vineyards  
Wildfire  
William Grant & Sons  
William Wrigley Jr. Co.  
Wow Bao

# Lincoln Park Zoo

201 North Clark Street  
Chicago, IL 60614  
[www.lpzoo.org](http://www.lpzoo.org)

